

CITY OF DONCASTER & TEMPLESTOWE HERITAGE STUDY.

DONCASTER TAFE, DEEP CREEK DRIVE, DONCASTER EAST. A7.

HISTORY : Designed by Buchan Laird & Bawden Pty. Ltd for Kingswood College Ltd, in 1988.¹ The State Training Board purchased the property in late 1991, for use by Box Hill College of TAFE.

VISUAL DESCRIPTION : On a grassy hillside are a sequence of flat steel deck roofed buildings of stained timber and brick, all in fawn colours. The dominant design elements are entrance-canopies and sun-shades over windows, supported on cylindrical exposed concrete piers. The shades are quadrant radiussed, of timber slats, on very light steel brackets.

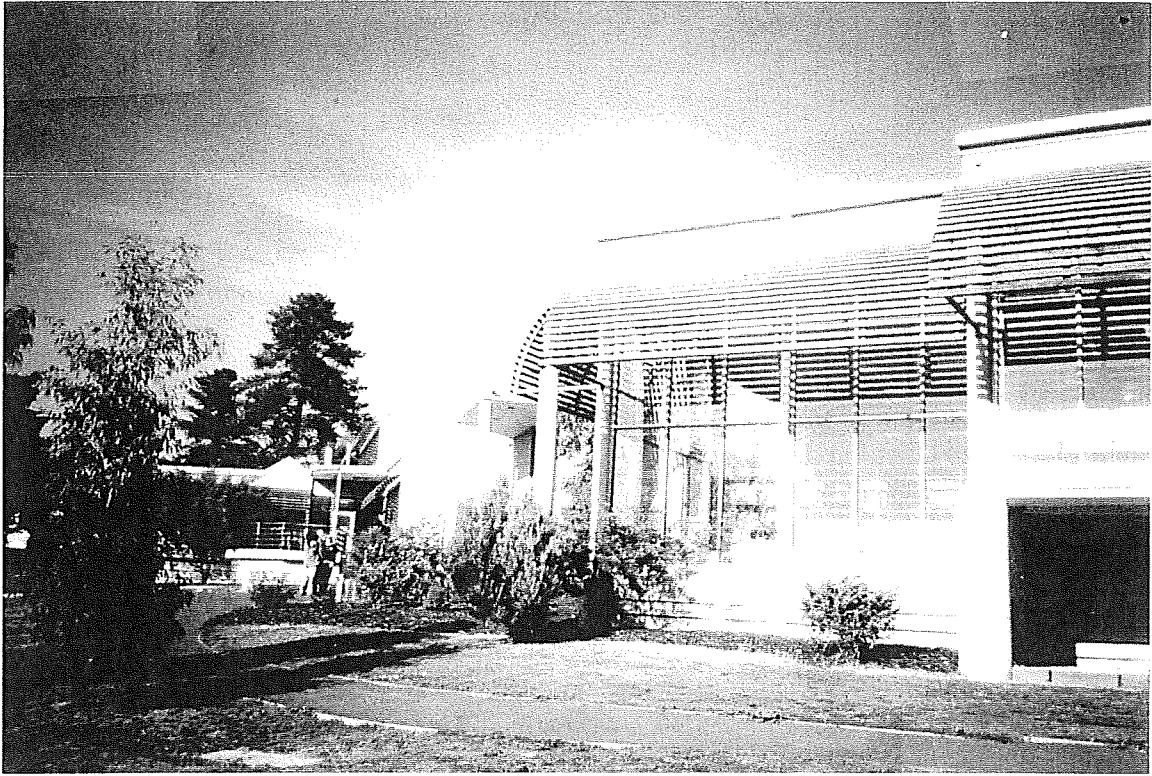
COMPARATIVE ANALYSIS : In the City, comparable to Warrandyte High School, Warrandyte Road (NE cnr Alexander Road) Warrandyte (1984-5) and Carey Baptist Grammar School Donvale Campus, Era Court, Donvale (1971-72).

SIGNIFICANCE : Doncaster TAFE is a characteristic late 1980s secondary campus designed by the prominent architects Buchan Laird & Bawden and built in 1988. It is of local architectural interest.

INTACTNESS : Very good.

CONDITION & THREATS : Very good condition.

REFERENCES : 1. Drawings held by the TAFE College are dated March and April 1988. Richard Peterson in conversation with Joan Moore, 14 July 1993.



DONCASTER CAMPUS
BOX HILL COLLEGE OF TAFE.