

CITY OF DONCASTER & TEMPLESTOWE HERITAGE STUDY.

18 TOWER STREET, DONCASTER. A11.

HISTORY : Designed by John Reid of Keith Reid and John R. Reid Architects¹, and built in 1967-68² for Mr and Mrs L.F. Crooks, who still live there. The Reids designed a number of modern houses in the City, particularly in the late 1960s and 70s. The builder was R.& M. Beasley of Orchard Grove, Templestowe.

VISUAL DESCRIPTION : A simple strong design, characteristic of its period. It consists of a long gable-roofed pavilion set across its site, penetrated at front by a porte-cochere and a carport at rear, the driveway circumnavigating the house. It is linked to screening garden-walls to create a courtyard. The roof has cedar shingles and mission brown fascia, with a fine profile spouting, over coffee-coloured pressed bricks. It is sited to take full advantage of the northern sun and the view over the Ruffey Creek valley. There are large sliding aluminium windows, with an inset pergola, divided by deep brick piers and a chimney. The effect is more formal than most other Reid houses and almost Palladian.

COMPARATIVE ANALYSIS : There are nine houses from the firm of Keith Reid and John A. Reid identified in the Study over the period 1964-77. At least five of them could be said to be rectangular pavilion plan with gable roof. Preceding these is 72 Macedon Road (1964) with a hip-roof and no eaves, not directly comparable. 74 Macedon Road derives from this, but its sequence of gables recurs only at Mclachlan Street (1966,70). The first gable pavilions are 14 Pine Avenue, Park Orchards (1965) and 42 Melbourne Hill Road, Warrandyte (1966,70), both elevated with cantilevered front decks, like Mclachlan Street. These are most comparable to 18 Tower Street (1970?) which is set firmly on its site, introducing some classical formality with a portico-like porte-cochere and articulating piers. The System House, a small pavilion (1972), with inset pergola (like 18 Tower Street) follows. Later, 7 Raneleigh Drive (1972) and 10-12 Enfield Road (1977) are more complex than the rectangular pavilions.

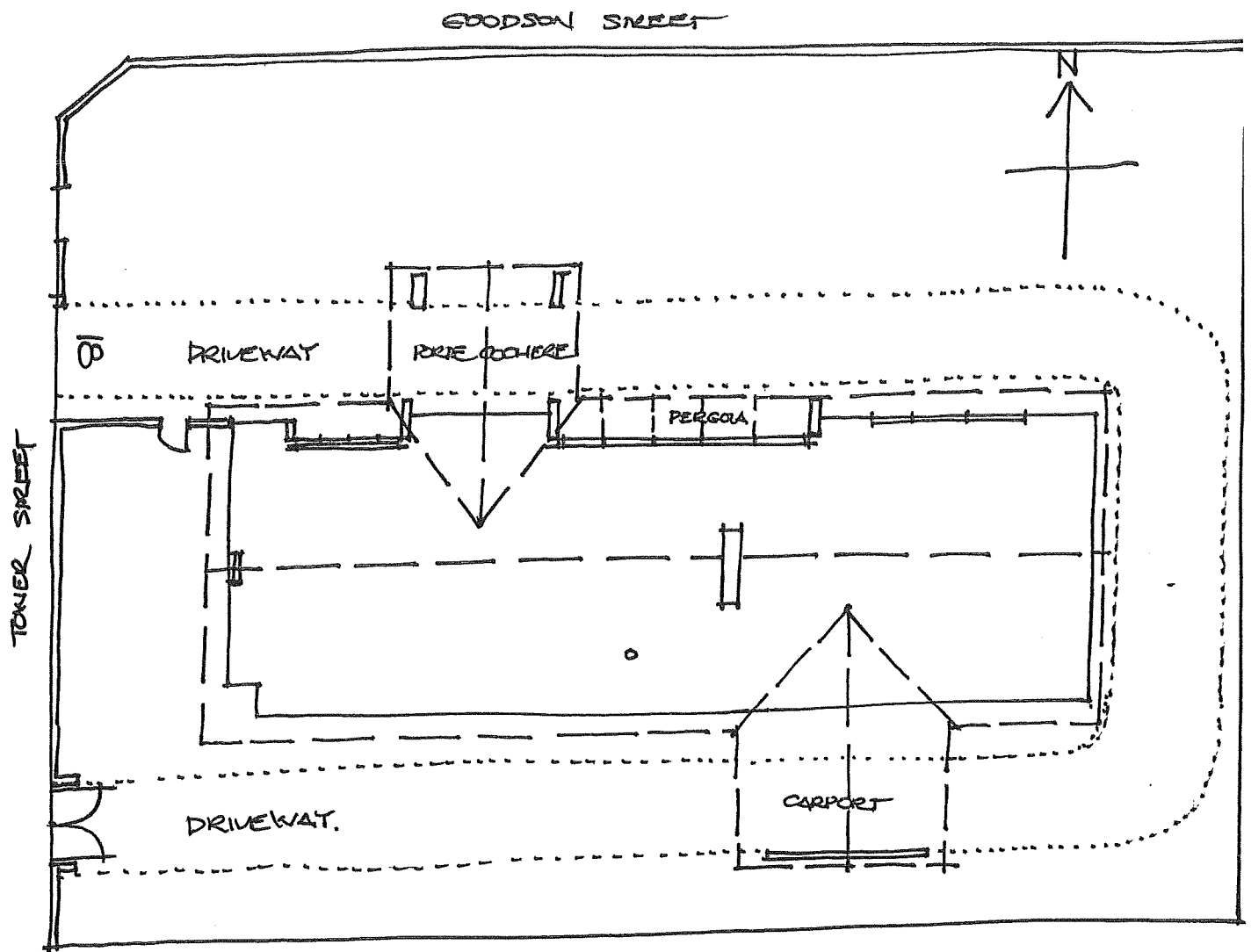
SIGNIFICANCE : Of local architectural interest as a characteristic and unaltered Reid house, built in 1967-68, well related to its exposed site and well designed to capture the north sun and view of Ruffeys Creek valley. Of interest for its more classical elements, including the frequently pretentious porte-cochere, here incorporated into a modern design.

INTACTNESS : Very good. There have been no alterations.³

CONDITION & THREATS : Timber needs repainting and shingles need repair. There is structural cracking, also affecting the front fence. Needs some maintenance.

REFERENCES : 1. Letter, John Reid to Richard Peterson 28 February, 1991.
2. City of Doncaster and Templestowe Building Approvals Records : BA 542, December 1967.
3. Ibid.

Note : this sheet supersedes the entry on p.162 (193.23) of the Heritage Study.



"BOAMBILLEE" 18 TOWER STREET, DUNCASTER