

CITY OF DONCASTER & TEMPLESTOWE HERITAGE STUDY.

TREE, 23 TILLS DRIVE, WARRANDYTE. A23.

HISTORY : INSPECTED ONLY, NOT RESEARCHED.

VISUAL DESCRIPTION : An Eucalyptus camaldulensis, River Red Gum (or Eucalyptus viminalis, Manna Gum) "of great size and age. It measures approximately 5 metres circumference near the base and is over 30 metres height".¹ It is located near the Yarra River on the property of Mr and Mrs O'Connor.

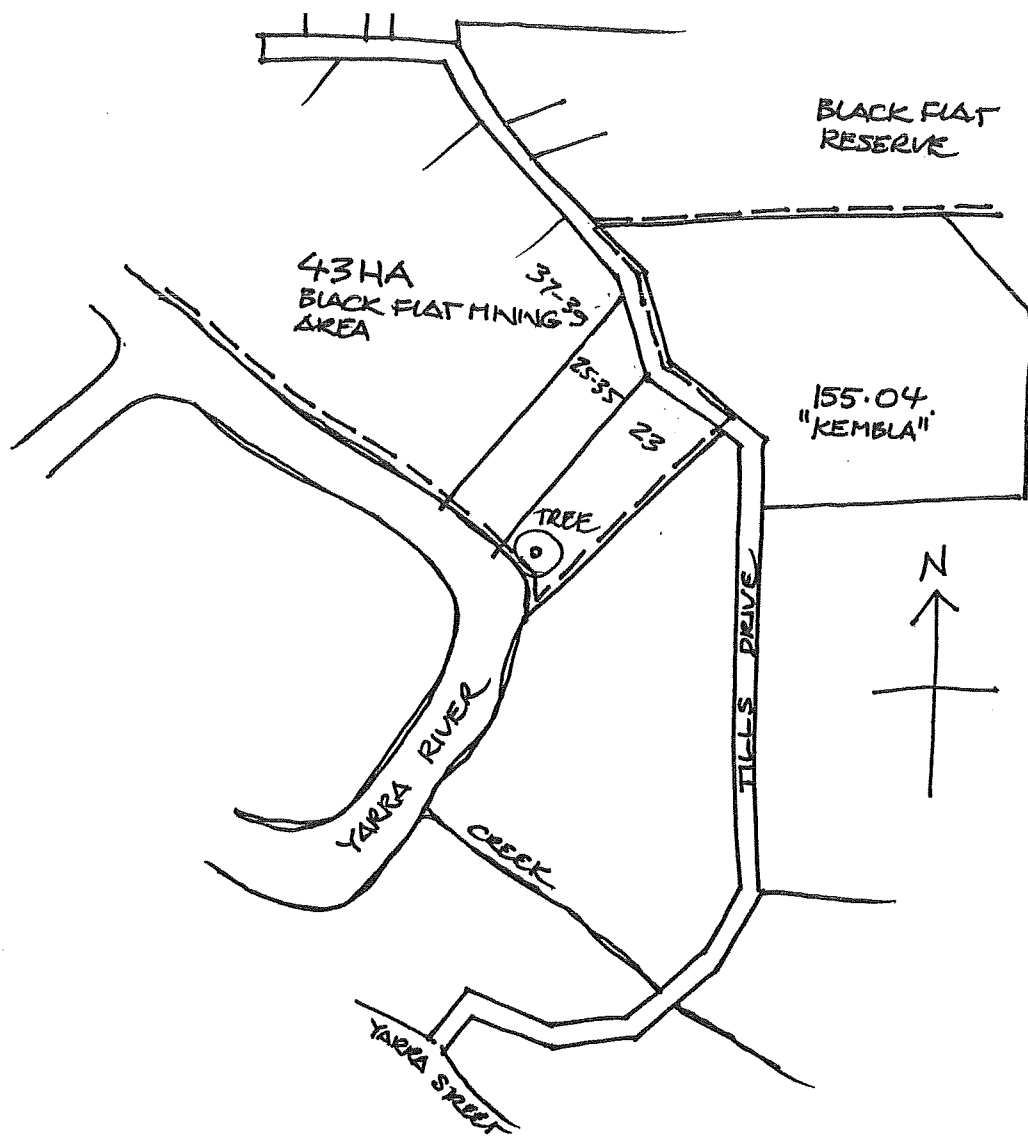
COMPARATIVE ANALYSIS : River Red Gums are identified in the Study at Lot 2, Fitzsimmons Lane, Templestowe (2), outside Teese's Nursery, Porter Street, Templestowe (8), Templestowe High School (1), Fran Court, Templestowe (3), and Yarra Valley Country Club, Templestowe Road, Bulleen (1). This size is typical for this species.²

SIGNIFICANCE : A characteristic, large Eucalyptus Camaldulensis, Red River Gum (or Eucalyptus Viminalis, Manna Gum) of local interest.

INTACTNESS :

CONDITION & THREATS : No threats. Apparently, good condition.

REFERENCES : 1. Ms Cherry Manders, 23-35 Tills Drive, Warrandyte holds a photograph of the tree in the 1934 floods. Refer her letter to Council, 27 January 1991.
2. Ms Yvonne Schneider, coordinator, Committee for the Register of Significant Trees of Victoria, telephone conversation, 16 July 1993.



RIVER RED GUM
(OR MANNA GUM)

TREE, RIVER BEND ONLY 23 TILLS DRIVE, WARRANHYTE,