

**CITY OF DONCASTER & TEMPLESTOWE HERITAGE STUDY.**

**63 & 108 PARKER STREET, TEMPLESTOWE LOWER. A24.**

**HISTORY : INSPECTED ONLY, NOT RESEARCHED.**

The wall No.1 is the "Miners' Wall" built in the 1850s to wash ore. Part was demolished in 1979<sup>1</sup> and it has recently been re-pointed. Wall No.2 is a dam and retaining wall, built similarly by a local committee to form a swimming pool for Templestowe Primary School in 1910. "As it filled only in winter, it had little value".<sup>2</sup>

**VISUAL DESCRIPTION :** Radiating retaining walls, curved to strengthen, of roughly ashlar squared boulders of about 600x450mm size, in apparently igneous rock. No.1 is about 15-16 metres long and over two metres high. (The length of No.2 is uncertain, as part is inaccessible). No.1 is located on the north (rear) boundary of 61 Parker Street, on Ruffey's Creek and No.2 on the south bank at the rear of 108 Parker Street. Here there is also a dam wall (now breached) penetrated by a 300mm steel pipe. The creek bed has been cut into the bedrock. The old timber footbridge survives next to the concrete road bridge, from which the swimming pool walls can be clearly seen.

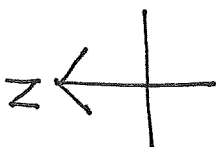
**COMPARATIVE ANALYSIS :** Comparable to the remains of the Coffey Dam (timber) Yarra Street (rear of former post office) and the Water Race, Pound Bend (not located). Other schools developed swimming pools including (in 1927) at Heidelberg, but this one is early.

**SIGNIFICANCE :** A masonry radiating retaining wall, (No.1) on Ruffey's Creek at 63 Parker Street, said to derive from mining practice in the 1850s and a second similar masonry retaining wall (No.2) further south-east on Ruffey's Creek at 108 Parker Street, with a (now breached) dam wall, built to form a swimming pool for Templestowe Primary School in 1910. They are of local historical significance.

**INTACTNESS :** Retaining wall no.1 appears to have been rebuilt or at least re-pointed, recently. Retaining wall no.2 is intact, except for the breach in the dam wall.

**CONDITION & THREATS :** Excellent condition.

**REFERENCES :** 1. Jim Poulter, quoted by Kelly Bourne in "Left out of Study", Doncaster and Templestowe News, 20 November, 1991, p.5 and Hazel Poulter, Templestowe : A Folk History, Melbourne 1991, gives the date of the pool at "the 1920s".  
2. L.J. Blake (Editor), Vision and Realisation. A Centenary History of State Education in Victoria, Melbourne 1973, Vol.3, p.336.



MAHONEY STREET

JAMES STREET

CREEK

PIPE

RETAINING WALL 1

SHED

HOUSE

No 61

CARPARK

BARNACLE BILL

BOWLING GREEN

PARKLAND

TEMPLESTONE PRE-SCHOOL

TEMPLESTONE CENTRE

TEMPLESTONE SKIPPING SCHOOL

YILLIS

CAR PARK

CAR PARK

No 63

PARKER STREET

CONCRETE ROAD BRIDGE

TIMBER FOOTBRIDGE

MAHONEY STREET

No 108

No 112

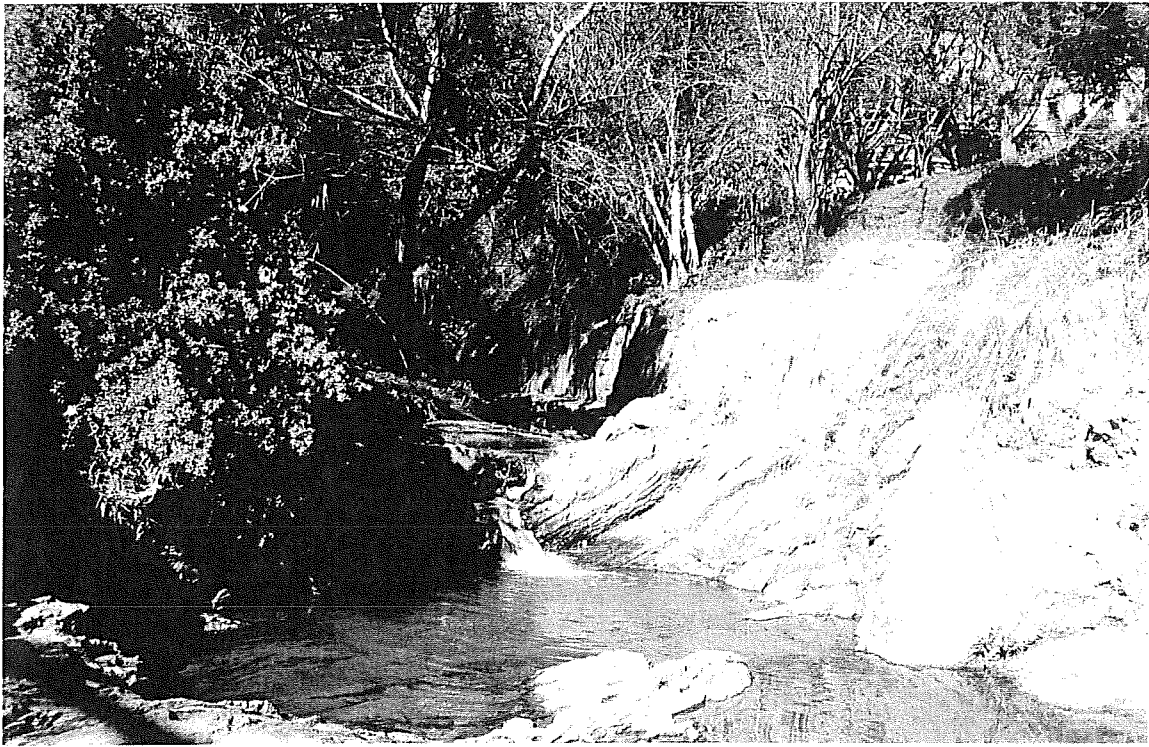
PIPE

BREACHED PART WALL

RETAINING WALL 2

CREEK

REAR 63 & REAR 108  
PARKER STREET,  
TEMPLESTONE LOWER.



NEAR 103 PARKER STREET