

**CITY OF DONCASTER & TEMPLESTOWE HERITAGE STUDY.**

**1 OAKLAND DRIVE, WARRANDYTE. A18.**

**HISTORY** : The "Laminex House" was built as a display house for the range of Laminex Industries building products. It was designed by David Napier of Napier Thomas Mantesso Healey Group Architects, and built by Napier Thomas builders acting as project managers and construction managers.<sup>1</sup> A building permit was issued in April 1984.<sup>2</sup> It was reconstructed with settings for new products and basement rooms in September 1986.<sup>3</sup> It closed about 1990 and sold as a private house.

**VISUAL DESCRIPTION** : It is a serenely symmetrical, flat-roofed pavilion, apparently floating above grass level. There is a glazed, gabled skylight, a double porte-cochere with a vaulted skylight between, all on a central axis. At sides are shallow bow windows and inset decks at corners. The effect is classical, almost Palladian. It is clad entirely in powder blue laminate. The interiors are exciting, designed with ingenuity, to integrally display the firm's products, in a generally Post-modern manner.

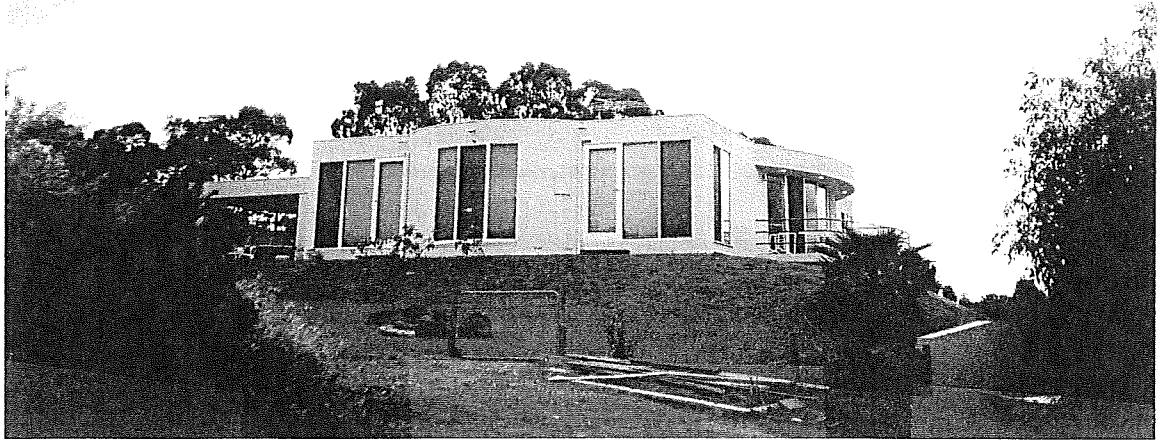
**COMPARATIVE ANALYSIS** : Other display houses of the same period by Landmark and Fasham Johnson at 28-34 Rosco Drive (1978-87) and Merchant Builders at 4-12 Beverley Hills Drive (1987) and 412-418 Porter Street are smaller and less lavish, having a different purpose. No other work by NTMH Group has been identified in the City.

**SIGNIFICANCE** : 1 Oakland Drive, Warrandyte is of local architectural significance as an unique display house designed by David Napier in 1984, to show the products of Laminex Industries.

**INTACTNESS** : Apparently good, with recent landscaping and planting.

**CONDITION & THREATS** : Excellent condition.

**REFERENCES** : 1. Geoffrey Wright in conversation with Dorothy of Laminex, 27 September 1991 and David Napier of Napier Thomas Mantesso Healey Group, 28 July 1993.  
2. BA 3548, 11 April 1984.  
3. The Laminex House Book, Melbourne 1986, held by Richard Peterson.



THE FORMER "LAMINEX HOUSE"  
1 OAKLAND DRIVE (NW COR WARRANDYNE ROAD),  
WARRANDYNE.