

CITY OF DONCASTER & TEMPLESTOWE HERITAGE STUDY.

"WINDRUSH", HOMESTEAD ROAD, TEMPLESTOWE. A26.

HISTORY : A derelict homestead "Monckton"¹ and barn, overgrown with creepers was demolished and its fieldstone, which had been quarried on the site, used in construction of the new house. This was designed by Darryl Jackson, Evan Walker architects in 1968 and built in 1969-70 by K.J. Rattle Pty. Ltd., builders. Engineers were Hamish Ramsay and landscape architects were Peter Glass and Gordon Ford of Eltham, for the owners, Mr and Mrs Graham Murray,² who still live there.

VISUAL DESCRIPTION : The house is built of stone and cedar on a large site of 12 hectares, on top of the isolated hill with extensive views in all directions. There are two very broad skillion roofs in grey tiles and a chimney, with very wide eaves protecting from north and west sun. There is stone paving, a swimming pool, machine room and 3-car garage. Broad terraces to the north are accessed from large windows. It covers 365m square metres, with a further 130 metres in ancillary spaces. It could only be inspected from the road.

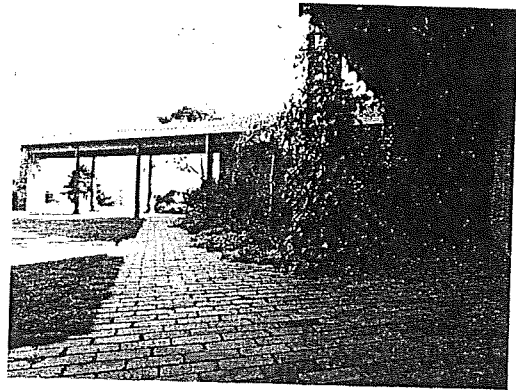
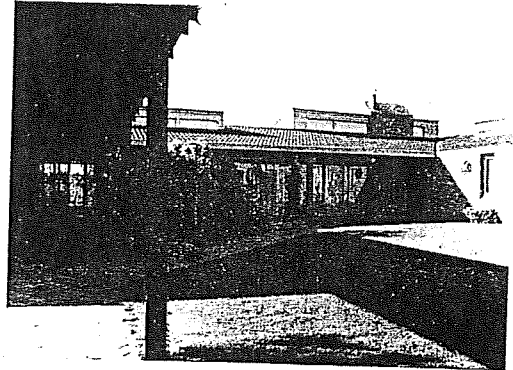
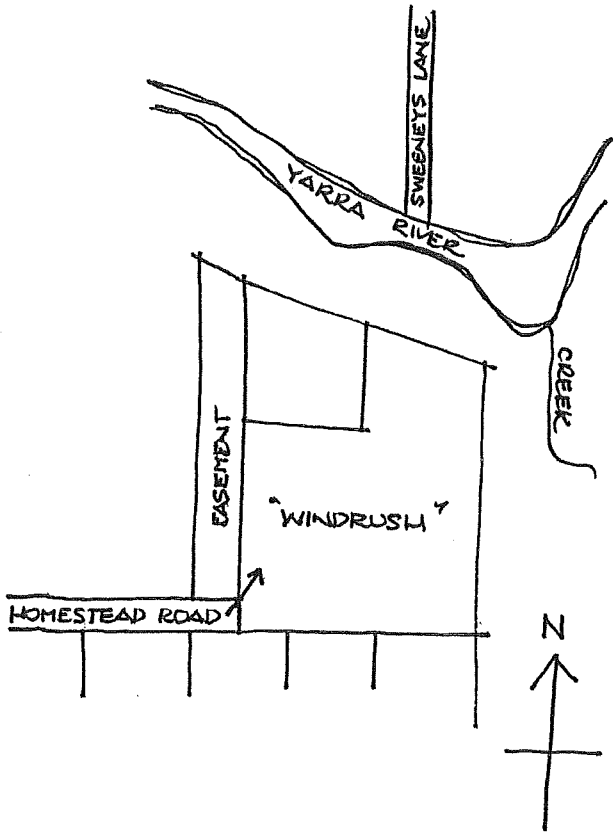
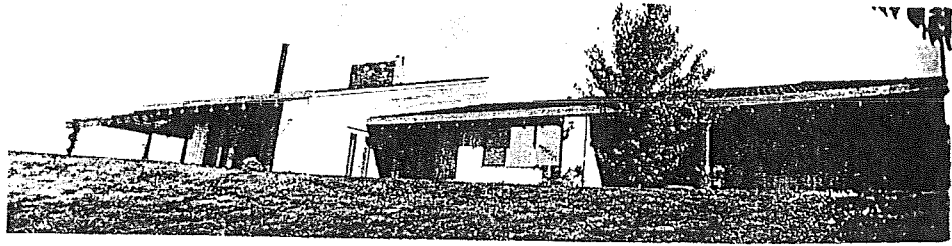
COMPARATIVE ANALYSIS : A much larger house than any other in this group, such as the Reid houses : 74 Macedon Road (1966), Mclachlan Street (1966,70); but these are generally earlier and on smaller, less spacious sites. No.2 St Georges Avenue (1973, Dennis Carter) is also comparable. It is the only Jackson/Walker building in the municipality. The landscaping is comparable to the work of Ellis Stones, a teacher of Ford and Glass, at Winter Park, High Street (1971-75). Also comparable to other Daryl Jackson and Kevin Borland houses of the period.

SIGNIFICANCE : The Murray House (1968-70) is of local architectural significance as a characteristic contemporary rural farmhouse by important architects Daryl Jackson, Evan Walker; with landscaping by important Eltham landscape designers Gordon Ford and Peter Glass.

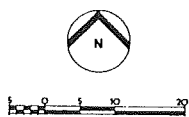
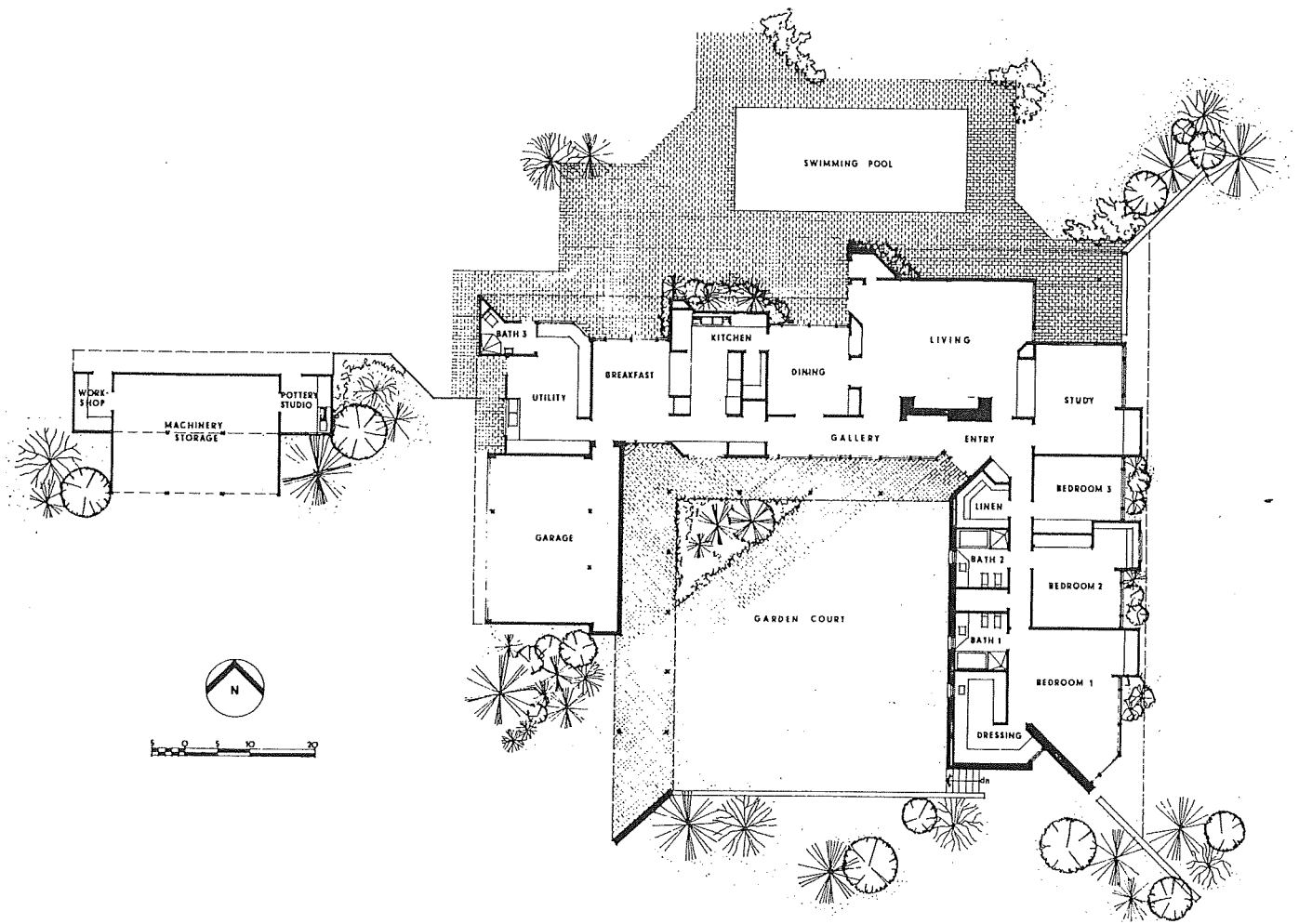
INTACTNESS : Not known, presumably good.

CONDITION & THREATS : Not known, presumably good.

REFERENCES : 1. Refer : A10. "Monckton" was built by Major Charles Newman in the early 1850s.
2. Architecture in Australia, October 1973, pp.78-79 and Norman Day, Modern Houses Melbourne (Brian Zouch) Melbourne 1976, pp.84-86.



FROM ARCHITECTURE IN AUSTRALIA, OCTOBER 1973, PP. 78 & 79.
 "WINDRUSH," HOMESTEAD ROAD, TEMPLESTONE.



FROM NEWMAN DAY, MODERN HOUSES. MELBORNE, P 86.
 "WINDRUSH" HOMESTEAD ROAD, TRIMBLETON.