

CITY OF DONCASTER & TEMPLESTOWE HERITAGE STUDY.

9 DUNDAS COURT, DONCASTER EAST. A6.

HISTORY : Designed by innovative architect John Wardle, this addition was completed in 1988 for the owners J.& B. Arrowsmith. The design re-orientates the living areas of the house towards the west and north-west to catch the afternoon sun, the parkland view and a new pool and outdoor living space. "The use of materials was generated by the clients wish to depart from those that already existed."¹
John Wardle had worked with Cocks and Carmichael from 1981-86, where he worked on the design of the Yarra Bridge, then he founded John Wardle Pty. Ltd.

VISUAL DESCRIPTION : Facing Reischiecks Reserve, a major exciting addition to a conventional c1970 hip-roofed, tumble coffee-coloured brick house. In the Deconstructivist manner, its crystalline forms, acute and obtuse angles, cantilevered corner-windows and roof planes collide and embrace the sunlit pool-side space, adjoining the parkland. Wide sliding glazed doors have horizontal mullions, with teal and grey lining boards and bagged brickwork. There is a delicate birdswing-like sun-shade of timber slats on light steel rod. The kitchen forms the pivot between the old house and its addition : the walls swell out and around it and materials change to express the transition.

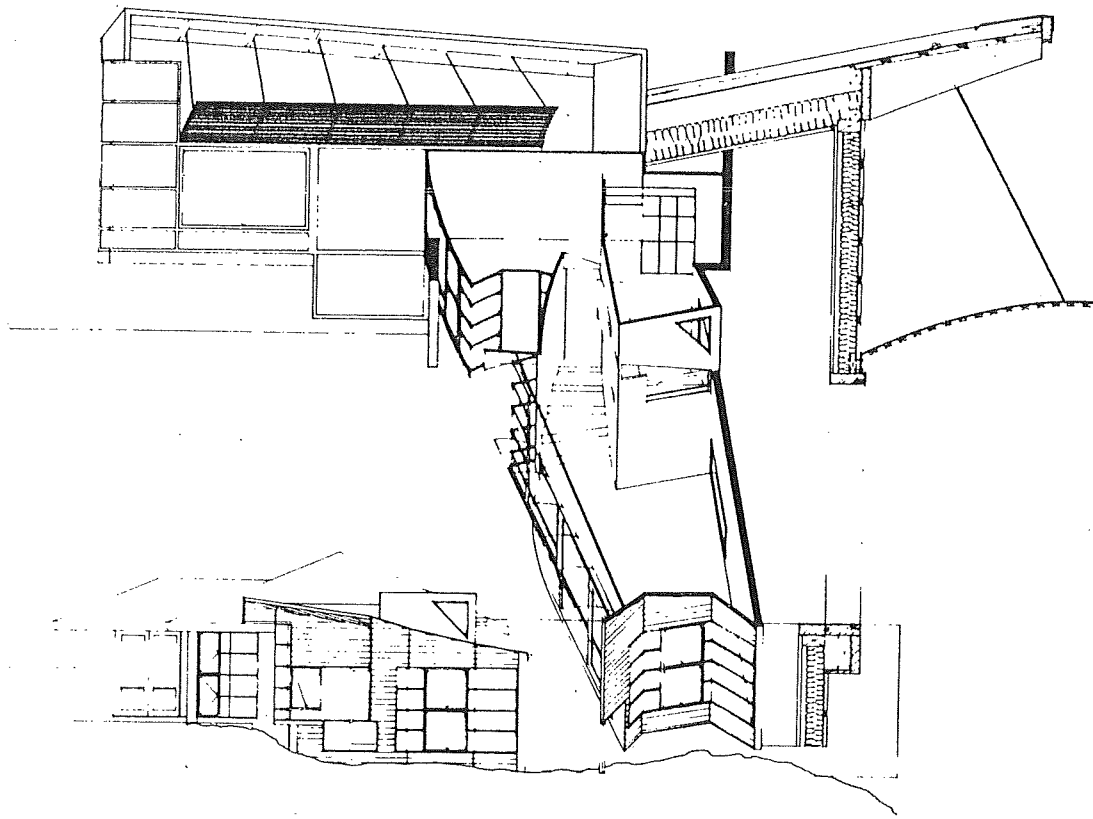
COMPARATIVE ANALYSIS : No building in the City is stylistically comparable, but it may be seen as a development from Robinson Chen's houses at 37-39 and 41-43 Curry Road, Park Orchards (1982). Comparable Wardle buildings are 10 Selbourne Road, Toorak (1990), CSIRO Division of Biomolecular Engineering, 343 Royal Parade, Parkville (1991) and "Vertigo" Restaurant, Toorak Road, South Yarra (1990, Demolished).

SIGNIFICANCE : Completed in 1990 by innovative architect John Wardle, this exciting small addition is of local architectural significance as the only example of contemporary Deconstructivist design in the City. It demonstrates how a careful reworking of a conventional suburban house can regain design objectives (such as sunlight, outdoor living space and outlook) lost in the original building.

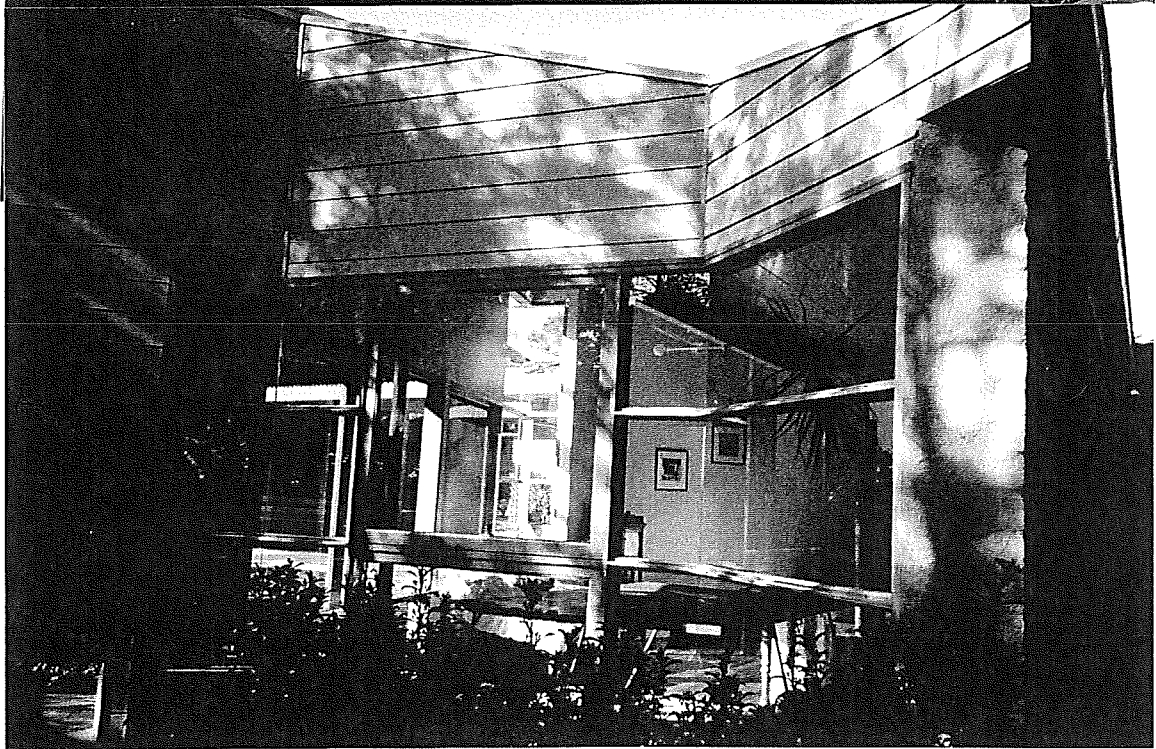
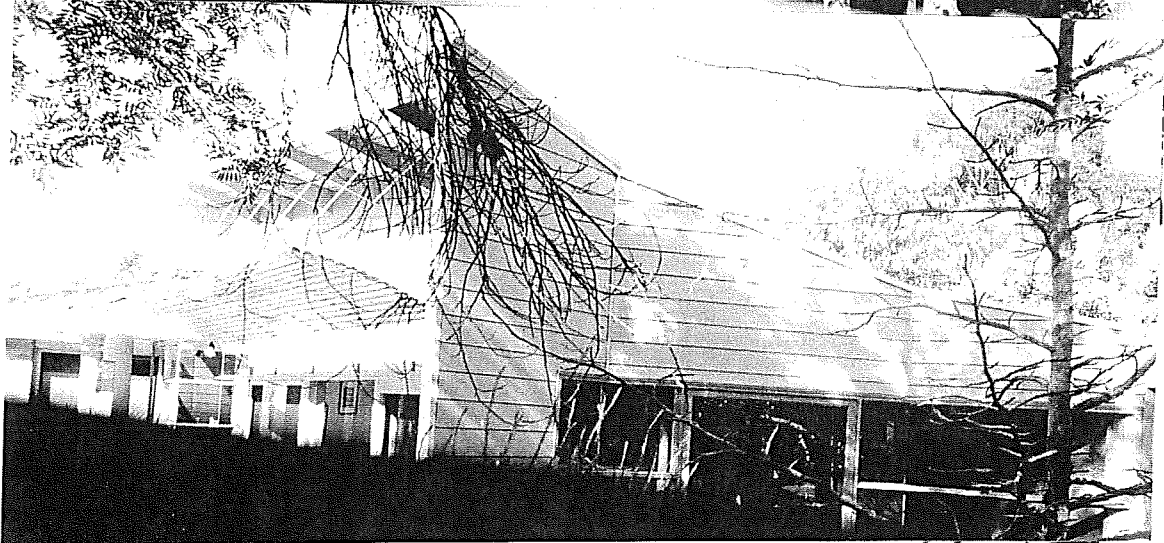
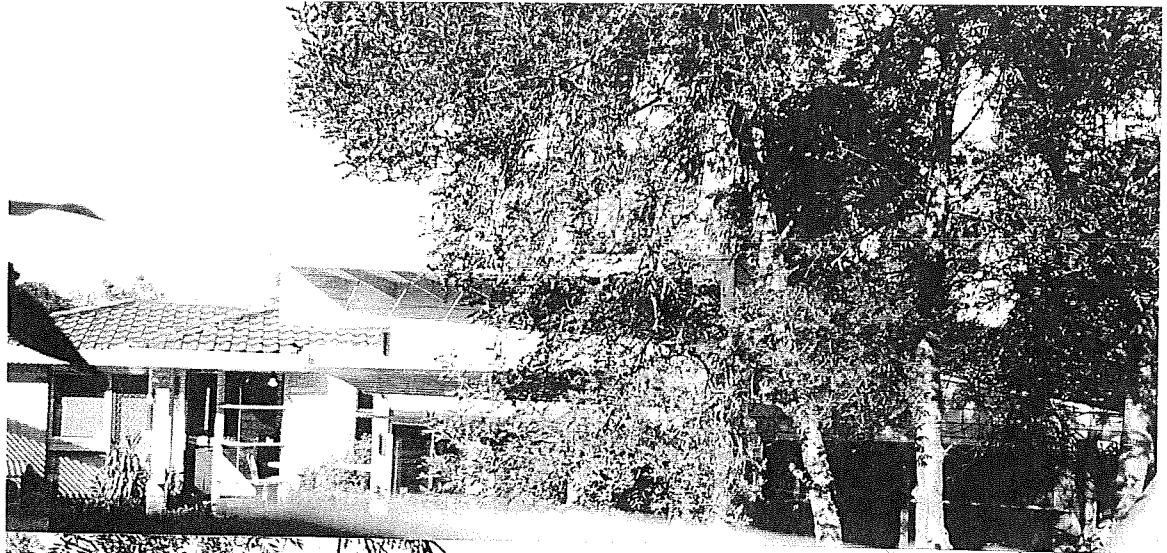
INTACTNESS : Apparently excellent.

CONDITION & THREATS : Excellent condition.

REFERENCES : 1. Doug Evans (Editor), AARDVARK. The RMIT Guide to Contemporary Melbourne Architecture (Department of Architecture, RMIT) Melbourne (undated, 1992?) pp.116, 170 & 182; John Wardle "Kitchens Make a Comeback", Architecture Australia, August 1991, pp. 52-54.



9 RUDAS COURT, DONCASTER EAST. AARDVARK, P116.



9 DUNDAS COURT, DONCASTER EAST.