

**CITY OF DONCASTER & TEMPLESTOWE HERITAGE STUDY.**

**"LONGRIDGE FARM", ALEXANDER ROAD, WARRANDYTE. A2.**

**HISTORY** : Built in the 1920s, it more recently became the centre of a stud property until acquired by the MMBW. It took its name from its neighbour, which was then renamed "Nilja" and subdivided as a separate property.<sup>1</sup> There have been various additions about 1950.

**VISUAL DESCRIPTION** : The farmhouse is situated on the highest point, with spectacular views in all directions over the Metropolitan Park. A timber Californian Bungalow farmhouse, with a hip-roof and minor gables projecting in three directions. It is a rectangular plan, with a hip-roofed wing at right and a central chimney. There are deep eaves and a verandah (balcony) facing east. This has been subsequently infilled and a further balcony added. Windows are casements with leadlighting and there are bay windows facing east and west. There is a stair leading to basement rooms and a sandstone terrace at the north-west corner, the entry. There are two simple outbuildings of asbestos cement : a shed, and a barn with an accommodation room with its own fireplace. There is a scar tree on the north slope.

**COMPARATIVE ANALYSIS** : Comparable to 50 George Street, Doncaster East; High Street (cnr Linton Avenue, Lower Templestowe; 92 King Street, Templestowe; "Caringa", 1 Monckton Road (NW cnr Websters Road), Templestowe; 34 Wilsons Road, Doncaster and "River Clay", Yarra Street, Warrandyte.

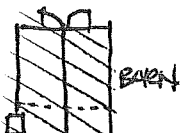
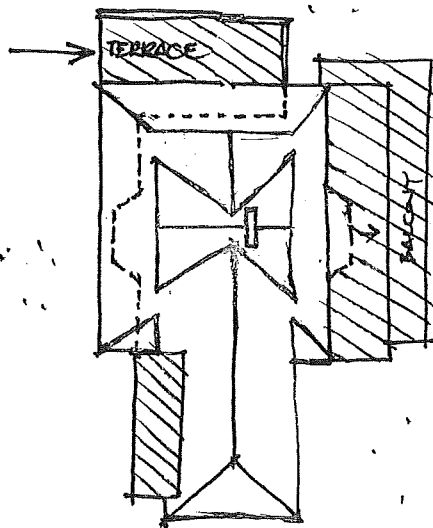
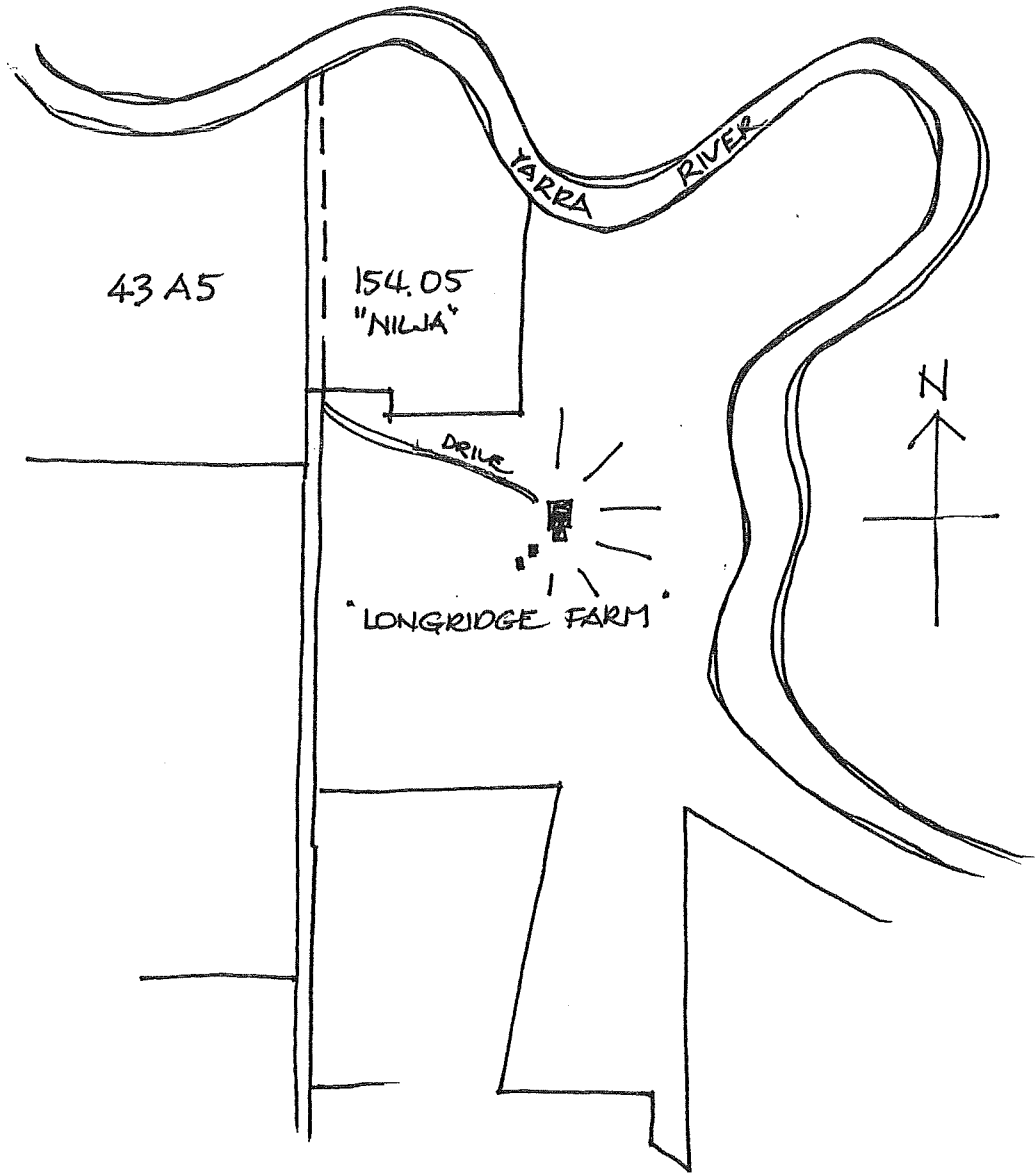
**SIGNIFICANCE** : A characteristic, relatively intact 1920s Californian Bungalow, timber farmhouse with some later additions (c1950). It is sited spectacularly with views in all directions. Of local architectural interest.

**INTACTNESS** : Intact, including interiors.

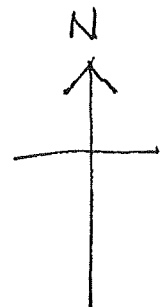
**CONDITION & THREATS** : Excellent condition. No threats.

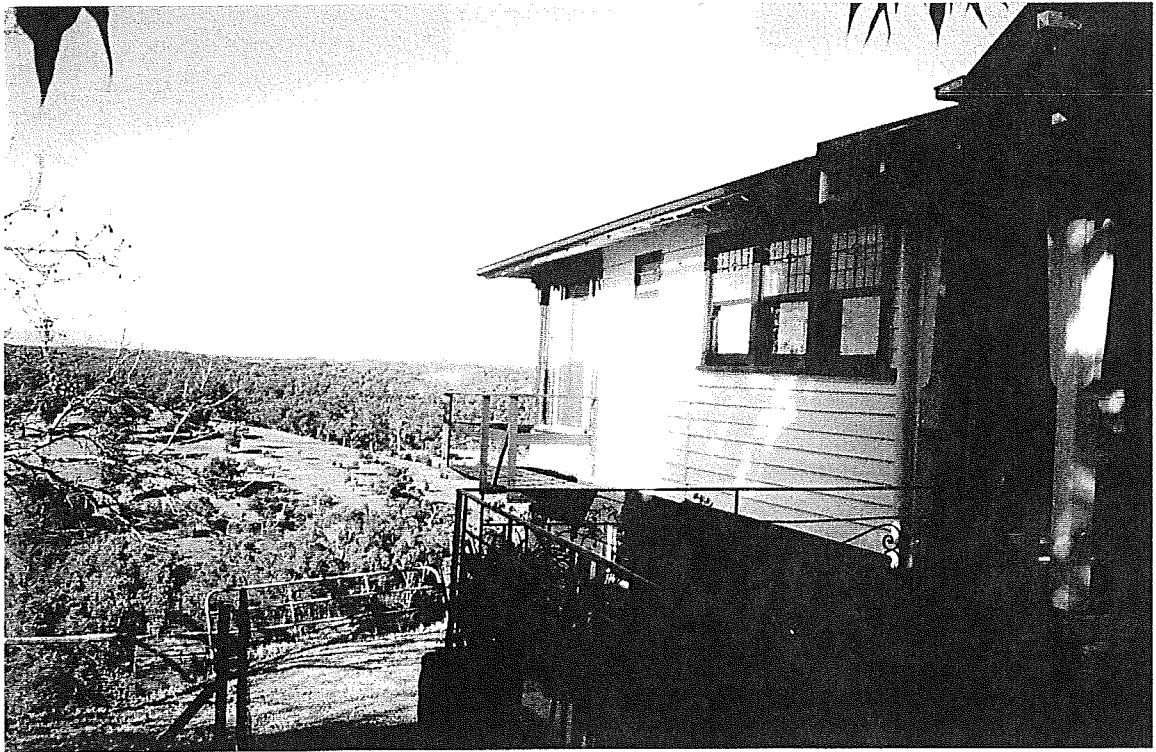
**REFERENCES** : 1. Interview with Mr Glen Jameson, Ranger, 17 July 1993. It was built after 1922. A photograph of that date of "Nilja" describes it as "Longridge". Held at "Longridge Farm".

LONGRIDGE FARM.  
ALEXANDER ROAD, WARRANDYTE



////// c-1950 ADDITIONS SHADED





'LONGRIDGE FARM',  
ALEXANDER ROAD, WARRANDOTTE.