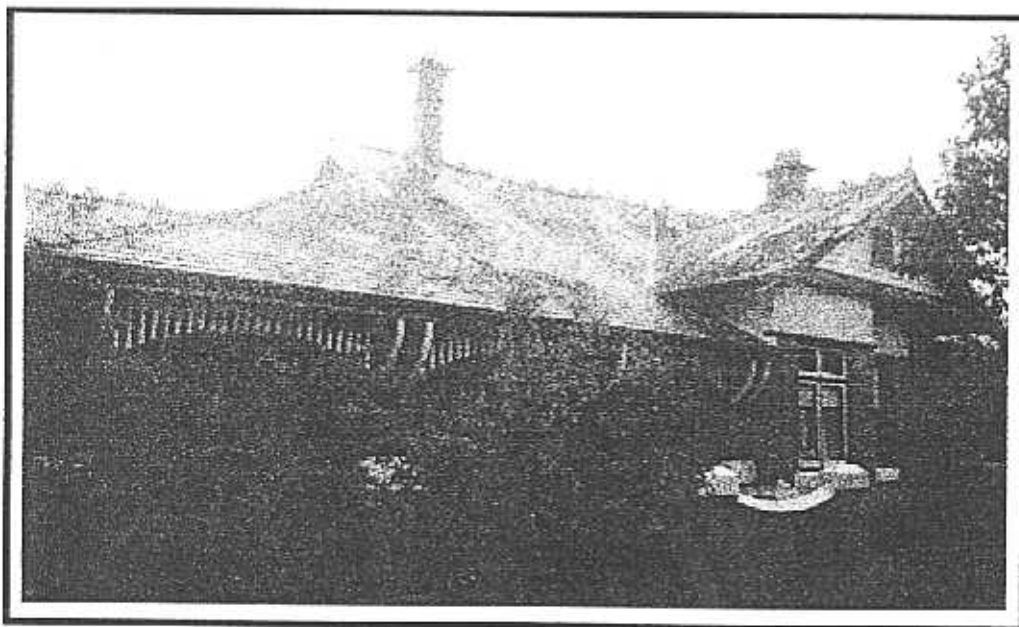
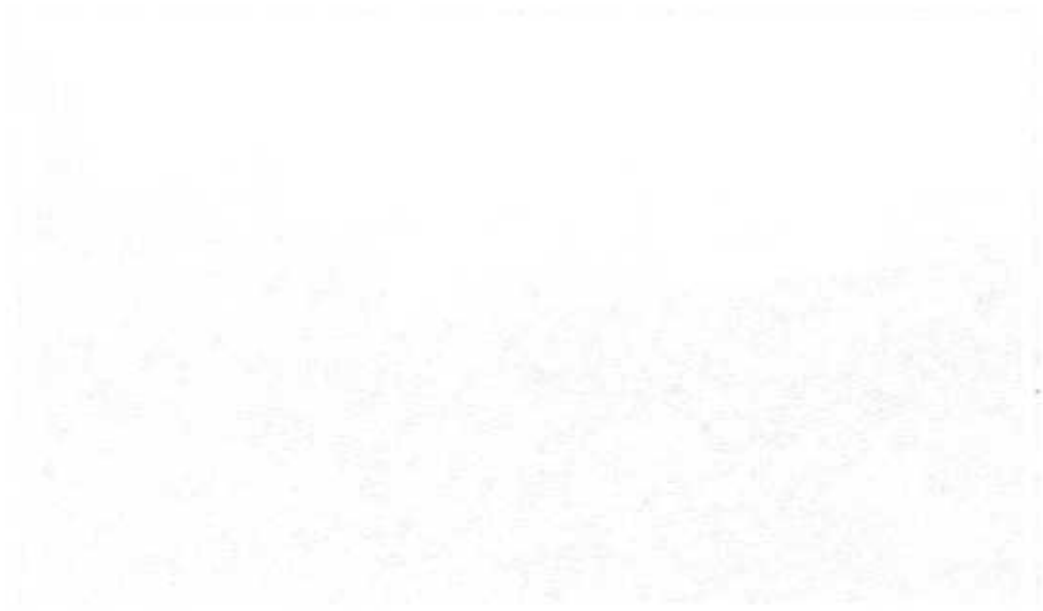


**NEWTOWN URBAN CONSERVATION STUDY, - 'C' CITATIONS, Ref: 125**  
Richard Peterson Architect & Conservation Consultant, Daniel Catrice Historian 1996.

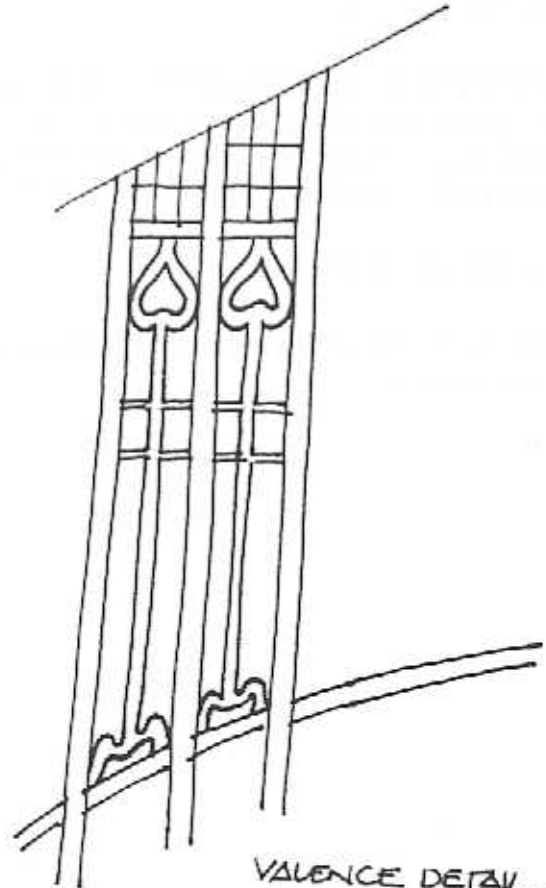
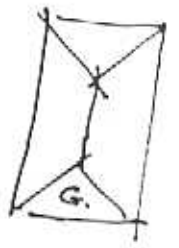
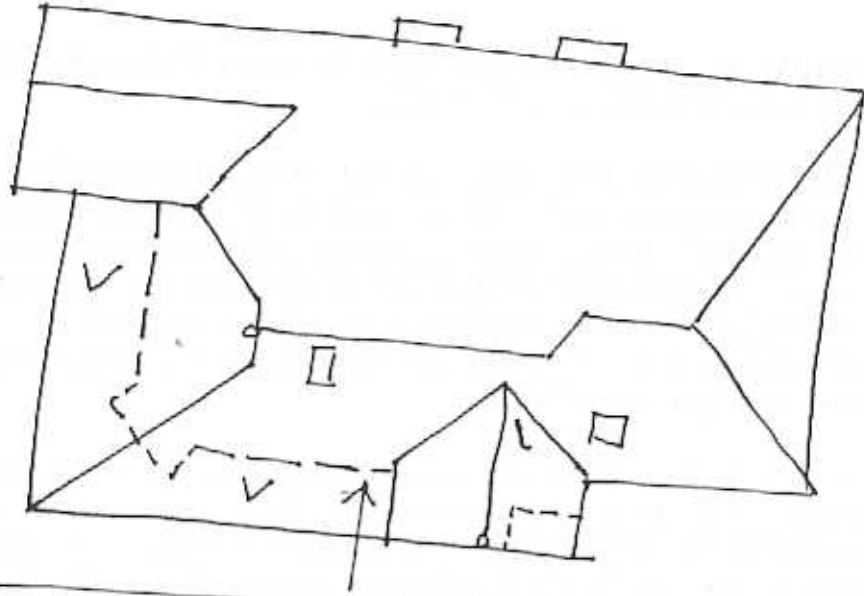
<b>NAME:</b> —
<b>ADDRESS:</b> 274 Pakington Street (north-east cnr Laurel Bank Parade)
<b>USE:</b> House
<b>CONSTRUCTION DATE:</b> 1925-6 <b>SOURCE:</b> Visual & 1
<b>DESIGNER:</b> — <b>BUILDER:</b> —
<b>CRITERIA:</b> H1, Ar1, <b>HISTORIC THEME:</b> 2.1
<b>DESCRIPTION:</b> <b>STYLE:</b> Edwardian <b>STORIES:</b> 1 <b>DETACHED.</b>
<b>MATERIALS:</b> <b>WALLS</b> Brick <b>ROOF</b> Slate <b>STRUCTURE</b> Lb.
<b>CONDITION:</b> Good <b>INTACTNESS:</b> Very good <b>THREATS:</b> Traffic.
<b>SIGNIFICANT INTACT ELEMENTS:</b> MATERIALS Slate. FORM. FACADE. VERANDAH. ROOF FORM. ROOF DECORATION. VERANDAH DECORATION. CHIMNEYS. DOORS. WINDOWS. PAINTWORK SCHEME. OUTBUILDING.
<b>SIGNIFICANCE:</b> <b>TYPE:</b> HISTORICAL. ARCHITECTURAL.
<b>LEVEL:</b> LOCAL.
<b>DESIGNATION EXISTING:</b> PLANNING SCHEME.
<b>RECOMMENDED CONTROL:</b> PLANNING SCHEME.
<b>GRID REF:</b> <b>SURVEY:</b> RP <b>DATE:</b> 19.5.96. <b>NEGS:</b> 6.1 & 6.2





Packwood Street

No 274  
125



VALANCE DETAIL.  
RP. S. 96. NTS.