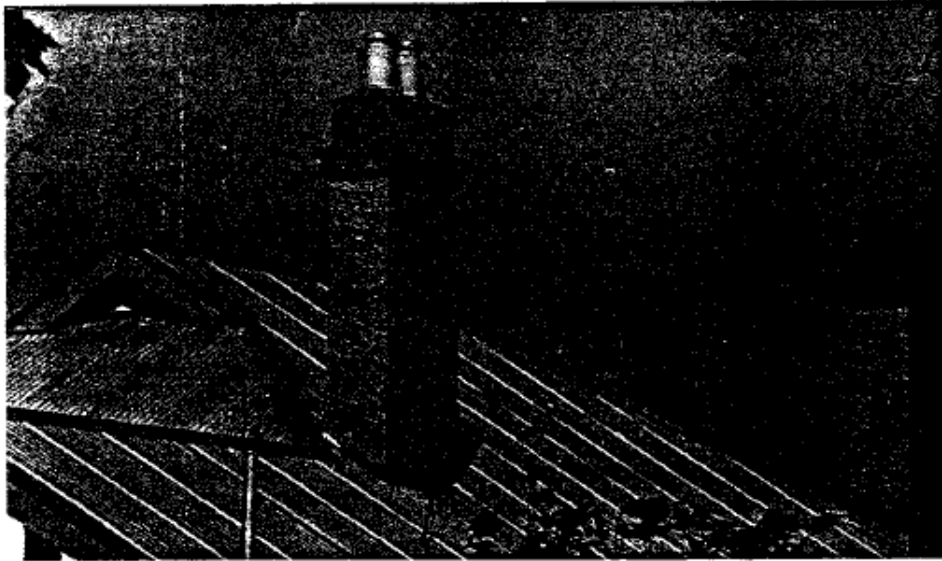




STUDLEY VILLA  
18 ALPHINGTON STREET

C.H. James and Percy Dobson's St. James Park Estate was divided from Vidal's Crown Portion 114. Surveyor, Thomas S. Munz, declared the estate for its proprietors in November 1883, but it was not until 1913 that Arthur Collins purchased lots 38-9 and built Studley Villa for 800 pounds.<sup>2</sup> In the years between, the land had been exchanged from one owner to the other: Ernest Simmott of North Fitzroy owned lot 39, in 1890, whilst A.F. Howard owned lot 38.<sup>3</sup> After Arthur Collins' death, Mrs. Elizabeth Collins occupied Studley Villa into

the 1940's whilst, after the war, one Robert H. Trotter lived there.<sup>4</sup> Until recently Peter Salsins owned the house.<sup>5</sup> Arthur Collins represented Collingwood as Mayor in 1914-15 and as a Councillor in 1908-25.<sup>6</sup> He was also an estate agent, with offices in Gipps Street and later Hoddle Street, Abbotsford, and a side door to Studley Villa was his business entrance. He was one of many former residents of the inner suburbs who escaped to Northcote and Heidelberg during the industrial expansion of 1900-10.



Scudley Villa is a double-fronted timber house, set on a bayed, asymmetrical plan. It possesses the elements of the Queen Anne style with its half-timbered gables, Dutch hip roof, tall rough-cast stucco chimneys and lead-light windows, but has a typical Victorian plan, with a double-loaded corridor, centrally placed. Bracketted window and door hoods are complemented by the window bays below with their deeply bracketted sills. The return-verandah has timber-slat balustrading and similar wide timber brackets to that of the window bays. An added garage has been recently replaced in a manner which echoes the main building. Internally, pressed metal ceilings predominate and the hearths, mantels and overmantels are generally intact and impressive. Arts and crafts derived designs, decorate the glazed border and hearth

tiles, whilst fretted timber trusswork fills the window bays. Major alterations are confined to the colour scheme.

Externally, paint-colour restoration has occurred and a sympathetically designed picket fence has been constructed. The garden contains some of the original plantings.

This is a relatively large house of the area and typical of the era. It has retained most of its original fittings and careful restoration has replaced those elements that were missing.

Sympathetic renovating and additions have enhanced the character of the house itself: making Scudley Villa perhaps the most original example of its style in Victoria, albeit a common one.