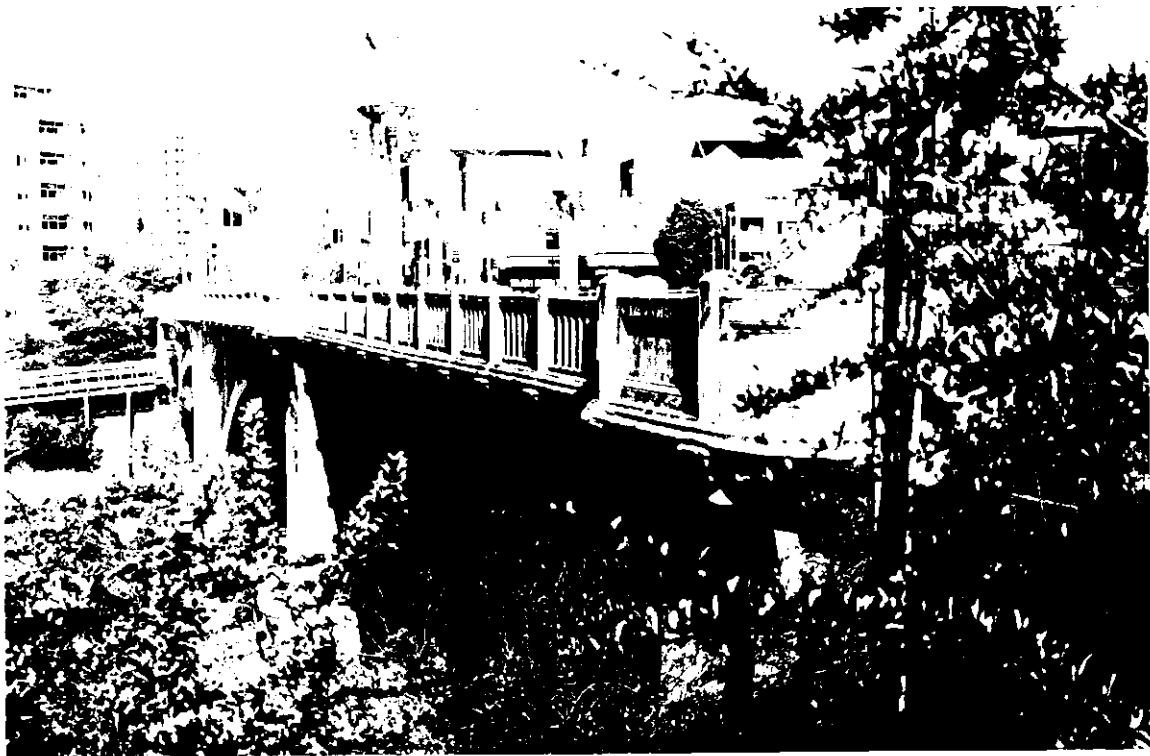


Building:	Church Street Bridge	Significance:	A
Address:	Church Street (Yarra River), Richmond	Melway Map Ref:	2K K2
Building Type:	Road Bridge	Construction Date:	1923
Architect:	H Desbrowe Annear & T R A Ashworth; Engineer: John Albert Lang	Builder:	Sir John Monash; Reinforced Concrete & Monier Pipe Construction Co.



Intactness:

G[x] F[] P[]

Condition:

G[x] F[] P[]

Existing Heritage Listings:

Victorian Heritage Register []
Register of the National Estate []
National Trust []

Recommended Heritage Listings:

Victorian Heritage Register [x]
Register of the National Estate [x]
Heritage Overlay Controls [x]

History

The Church Street Bridge was designed for the Prahran and Richmond Councils by H Desbrowe Annear and T R A Ashworth FRIVA, the engineer being John Albert Lang MCE. It was constructed in 1923 by Sir John Monash and the Reinforced Concrete & Monier Pipe Construction Co. The bridge, with three spans of reinforced concrete, cost £57,000.¹

The present bridge replaced an earlier bridge which was erected in 1856-57 linking Church Street with Chapel Street. The bridge had been purchased from the Imperial War Office, and had originally been designed to prevent Russian snipers from killing British troops during the Crimean War. It was a 210 foot (70 metres) span, ten foot (3 metres) high, iron bridge with solid riveted iron walls and stone buttresses.²

Description

The Church Street Bridge is a three-span bridge of reinforced concrete construction over the Yarra River, connecting Richmond and South Yarra. Three segmental arches span the river, above which are a series of semi-circular arched openings. The two piers between the arches are embellished with foliated cement rendered decoration. The bridge supports a two lanes of traffic, double tramlines and two pedestrian paths; the latter are cantilevered from the bridge structure, and have classically detailed consoles.

At street level, the balustrading comprises a series of rendered panels pieced with vertical openings; these terminate at the Richmond and South Yarra approaches with curved, panelled low walls. Eight pillars are regularly spaced along the length of the bridge, four on each side, and have classically derived ornament, typical of Annear's work during this period. The engaged swagged Ionic columns rest on moulded pedestals, and support modillioned entablatures. Above these are unusual Mannerist finials, square in plan, tapering as they rise and decorated with wreaths on each side. The finials terminate in curved pediments with volutes, above which are smaller conical finials surmounted by orbs. Each pillar supports four Victorian style cast iron and glass lanterns.

Comparative Examples

MacRobertson Bridge, Grange Road, Yarra River, Richmond
Hoddle Bridge, Yarra River, Richmond

Significance

The Church Street Bridge is of state architectural significance. The bridge was designed by prominent Melbourne architect Harold Desbrowe Annear in conjunction with architect T R A Ashworth and engineer John Albert Lang. The architectural design of the bridge reflects the classical revival phase of Annear's work, particularly evident in the ornate mannerist pillars.

The Church Street Bridge is also of local historical interest. It is the second bridge to cross the Yarra River at this point, replacing an iron bridge constructed in 1856-57.

1 D Smyth, *The Bridges of the Yarra, Toorak (Vic) 1979* [unpaged].

2 M Cannon. *Melbourne After the Gold Rush. Main Ridge (Vic), 1993.* p. 163.