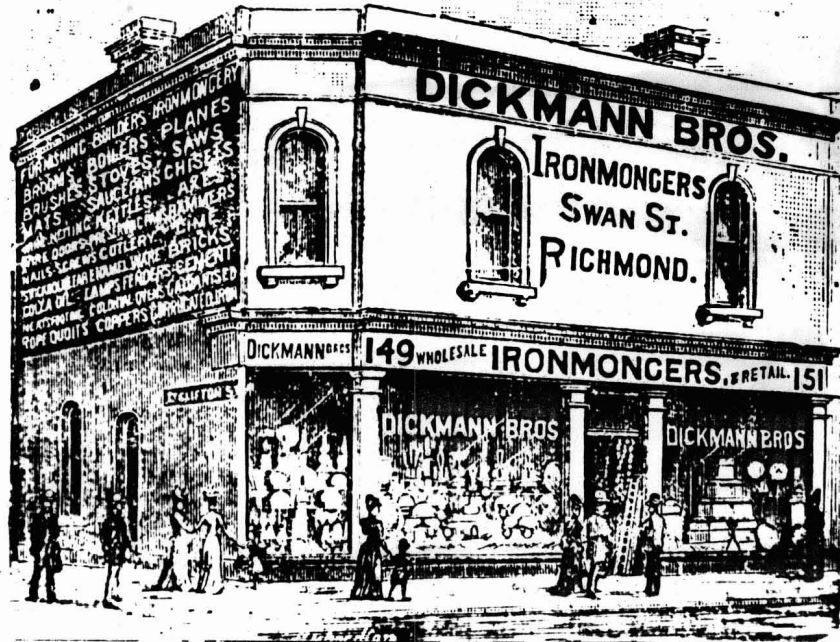


oting

NIST

Telephone No. 1366
First Centennial Exhibition.



In
ness,
ment
in the
restor
centre
back
vigou
Bilio

The
stren
healt
the b
nerve

The
wond
attent
times
of fat
and e
They
and a

Co
No
quick
on as
nula
the cl
C
Lu

Photo held by Richmond Historical Society

This lithograph does not show the building
now known as 135-145 Swan St., as Little
Clifton St. is now known as Waverley St.
The building now known as 135-145 Swan St.
occupies the corner of Clifton St.
and Swan St.

Michael Bismie T.P. Dept.
April, 1986.