

# BUILDING IDENTIFICATION FORM

## RICHMOND CONSERVATION STUDY

BUILDING ADDRESS *95-97 SWAN ST*

BUILDING TITLE

TYPE *SHOP*  
If not residence

EXISTING DESIGNATION

HBR

NER

NTC

GRADING

A

B

C

D

E

F

STREETSCAPE

1

2

3

CONSERVATION AREA

SURVEY DATE *16.0.04*

NEG. FILE *35-15*

### PERIOD

Early Victorian

Edwardian

Victorian

Late Victorian

CONSTRUCTION DATE *est. 1885*

Source *PARAPET*

### MATERIALS

Walls *CEMENT RENDER* Roof

### FORM

Attached

Detached

### SIGNIFICANT FEATURES

early paint colour scheme

eaves, roof or gable decoration

original unpainted wall finish

intact verandah decoration

ornamental wall detailing

early fence

original doors/windows

early garden

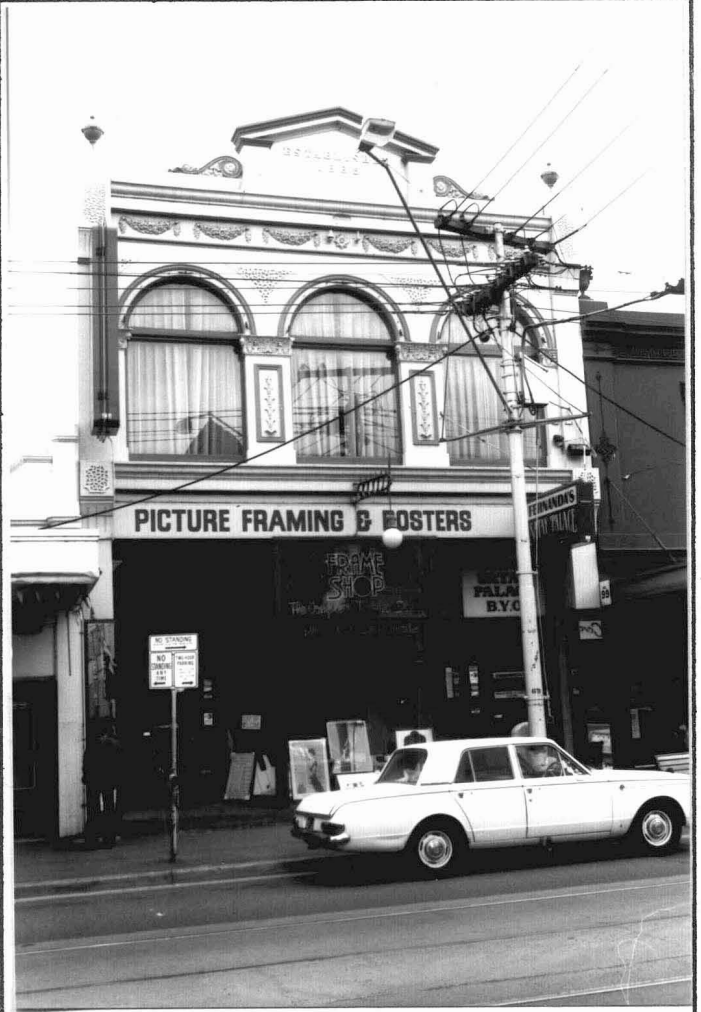
intact verandah structure

other prominent contrib. elevations

original parapet

original roof form & finish

original chimneys



INTEGRITY RATING

excellent

good

fair

poor

### ALTERATIONS & SPECIFIC GUIDELINES

No.	Sympathetic	S.G.	Inappropriate	S.G.	Extremely Inappropriate	S.G.
	<i>SHOP FRONT</i>				<i>VERANDAH REMOVAL</i>	<i>S</i>
			<i>PAINTED RENDER</i>	<i>RAM</i>		
			<i>SIGNAGE</i>	<i>S</i>		

O = reinstate original designs S = reinstate sympathetic alternative R = remove RAM = Remove by approved method

### COMMENTS

*First floor facade remains virtually unchanged since 1891, including glazed awning. See attached photo. Note early light fitting.*