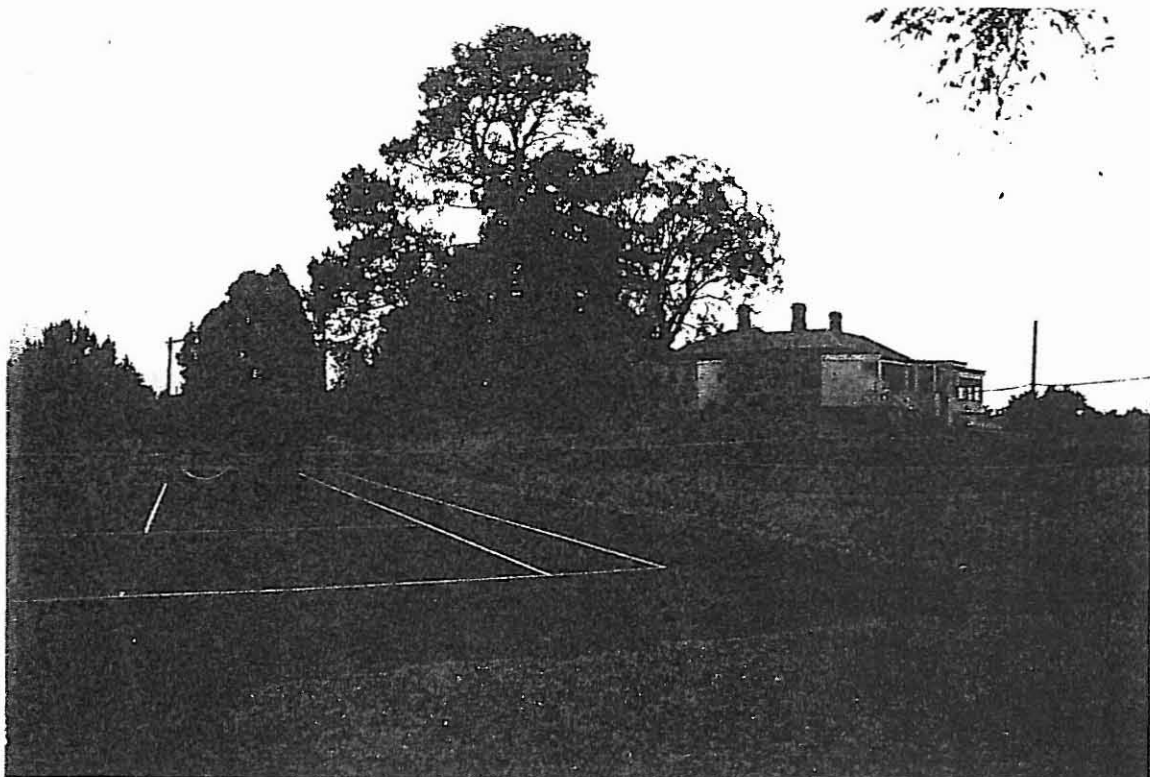


BACCHUS MARSH HERITAGE STUDY.**Ref: 355**

Richard Peterson Architect & Conservation Consultant. Daniel Catrice Historian 1994.

NAME: Bacchus Marsh Lawn Tennis Club Inc.			
PREVIOUS NAME: Maddingley Court House.			
ADDRESS: Maddingley Park (access, Taverner Street).			
TITLE DETAILS:			
USE: Private sports club.			
PREVIOUS USE: Court house; Municipal offices; Gardens curator's residence.			
SIGNIFICANT DATE: 1857-91?		CONSTRUCTION DATE: 1857-8	
SOURCE: 1			
ALTERATIONS/ADDITIONS:		DATE: 1891, 1957	SOURCE: 4
DESIGNER: PWD.		BUILDER: ?	SOURCE: 1
CRITERIA: H2,4; Ar1,3/ H2; So3.			
HISTORIC THEME: Governing/ Community life.			
DESCRIPTION:	STYLE: Classical	STORIES: 1	DETACHED.
MATERIALS:	WALLS Stone and timber	ROOF Iron	STRUCTURE Lb
CONDITION: Good?	INTACTNESS: Good?	THREATS: -	
SIGNIFICANT INTACT ELEMENTS:			
MATERIALS. FORM. FACADE. ?			
CHIMNEYS. WALL DECORATION. DOORS. ? WINDOWS. ?			
SIGNIFICANCE:			
TYPE: HISTORICAL. ARCHITECTURAL. SOCIAL.			
LEVEL: REGIONAL.			
DESIGNATION EXISTING: Nil			
RECOMMENDED CONTROL/NOMINATION: RNE. PLANNING SCHEME.			
MAP NO: U4.08 & U4.09	SURVEY: RP	DATE: 6.4.94	NEGS: 28.8-11



NEW FROM EAST.

HISTORY: Built in 1857-58, the Maddingley Court House is an early building by the Public Works Department of Victoria, which had been formed in 1856. It appears to have closed as a Court House by 1858 when the Bacchus Marsh Court House (ref: 151) was constructed. It remained disused or may have been used by the police until on 25 September 1866 it was purchased by the Bacchus Marsh and Maddingley Road District Board for £100 (\$200) with 2¼ acres(1ha) of the surrounding park for £9 (\$18).¹

And so it was used after 1866 as the offices of the Bacchus Marsh and Maddingley Road District. In 1871 this was wound up and the Shire established. This met here until the new Shire Offices were opened in Main Street in 1896² In 1891, the building was converted for use as a residence for the curator of Maddingley Park.³ Administration of the park was vested in the Bacchus Marsh Shire Council in 1935, thus clearing the way for the council, in 1957, to hand the building over to the Tennis Club. It was substantially enlarged for use as tennis clubrooms.

The formation of a lawn tennis club was discussed at a meeting of trustees of Maddingley Park in June 1895.⁴ A site was soon chosen, and in January 1896, a lawn tennis court was opened for public use.⁵ By 1935, there were three grass courts and two hard courts, served by a weatherboard clubhouse. Soon, an additional eleven grass courts were opened, and in 1957, the old Maddingley Court House, was acquired as club rooms.⁶

VISUAL DESCRIPTION: A stone Classical building with hip roof and eaves. The stone is dressed with quoins at corners; there is a smooth band at cornice-height and dado (on the north and extreme west elevation only). In the centre of the north elevation is a fine stone architrave moulding to a round headed door opening (now sealed). This has a keystone and the mould terminates in stops. There are three chimneys with Classical mouldings. Only about a third of the elevations were visible.

COMPARATIVE ANALYSIS: Apparently a very unusual courthouse plan, perhaps unique in Victoria. Dressing of stone is similar to the Bacchus Marsh Courthouse.

SIGNIFICANCE: An unusual Court House designed by the recently formed Public Works Department and built in 1857-8, but closed in 1858 to be replaced by the Bacchus Marsh Court House in Main Street, then subsequently used as Municipal offices by the Bacchus Marsh and District Road Board and the Shire Council until 1896(?). It is the earliest

¹ J. Lloyd, *The Road District Years*, p.81.

² Moore & Oomes, *Bacchus Marsh: A Pictorial Chronicle*, p.53; Lloyd, *The Road District Years*, p.81. No architectural drawings or PWD Contracts book records survive. Frances O'Neill, "Survey of Historic Courthouses", Department of Planning & Development, 1990, Data sheet.

³ The five year discrepancy has not been explained. It is not known where the Shire Council held meetings from 1891-96, possibly at the Mechanics' Institute (demolished).

⁴ *Bacchus Marsh Express*, 22 June 1895

⁵ *Ibid.*, 21 December 1895.

⁶ Camm, *Bacchus Marsh by Bacchus Marsh*, p.261

government building in the municipality: the first courthouse as well as the first office of municipal government.

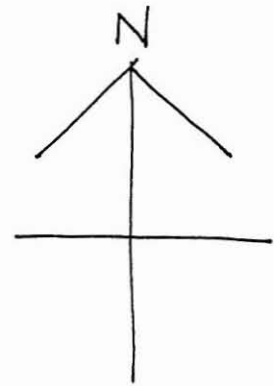
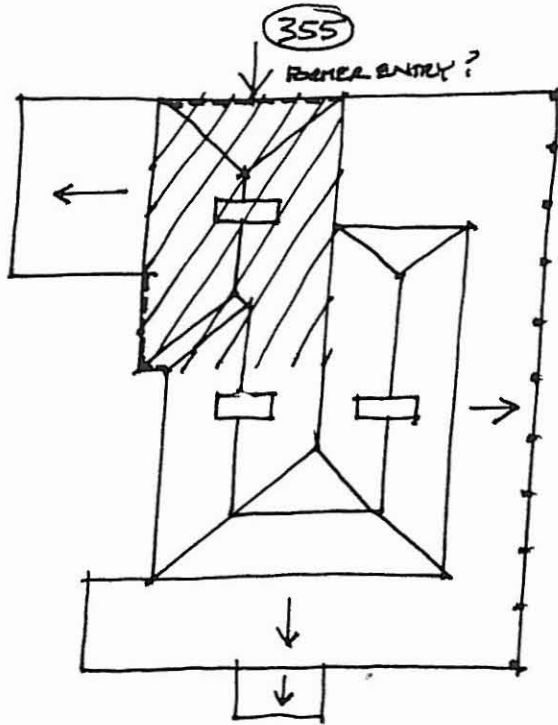
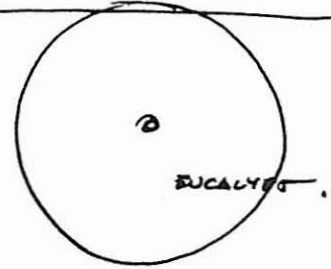
It is of regional historical significance for its association with judicial and municipal development in the early settlement, and in demonstrating the effect of early government action.


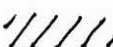
It is of regional architectural significance as a very early work of the recently formed Public Works Department in Victoria. It is a representative, if unusual, example of a very early courthouse building and a rare relatively intact survival of this building type.

More recently it has acquired local historical significance associated with sporting and social developments in community life and social significance. Throughout its life as a public building over 140 years as a traditional community focus and meeting place.

INTACTNESS: Good(?). There are major timber additions on all sides in the form of an infilled verandah, below eaves level. The former front round headed opening is sealed with brickwork. Behind these additions the degree of intactness is unknown. Was the original courthouse the north-west section only (shaded).

CONDITIONS & THREATS: Good(?). There is some cracking at cornice level in the north-west corner. Introduction of institutional services has damaged the stonework. There is some erosion of the lower stone surfaces. The opening sealed with brickwork is reversible and the timber additions may be removed.



 VISIBLE BANDED DECORATION
 POSSIBLE ORIGINAL CARPENTRY, (ENTRY FROM THE NORTH).



TENNIS COURTS.