

RESIDENCES
13, 15 James Street

History and Description

Constructed in 1857 of local bluestone for Enaes McKenzie, Richmond's first postmaster. It is a comparatively rare example of an early post gold rush pair of houses deriving from the picturesque Gothic styles of N.S.W. and Tasmania.

The authenticity of the recently constructed verandah is unknown. An early photograph shows no. 15 with a two storey verandah consisting of a curved corrugated iron roof, cast iron frieze and brackets, a trellised first floor balustrade, and a timber picket ground floor balustrade.

The external architraves are stucco and the bluestone is raise-pointed. The French doors and Gothic barge boards are original.

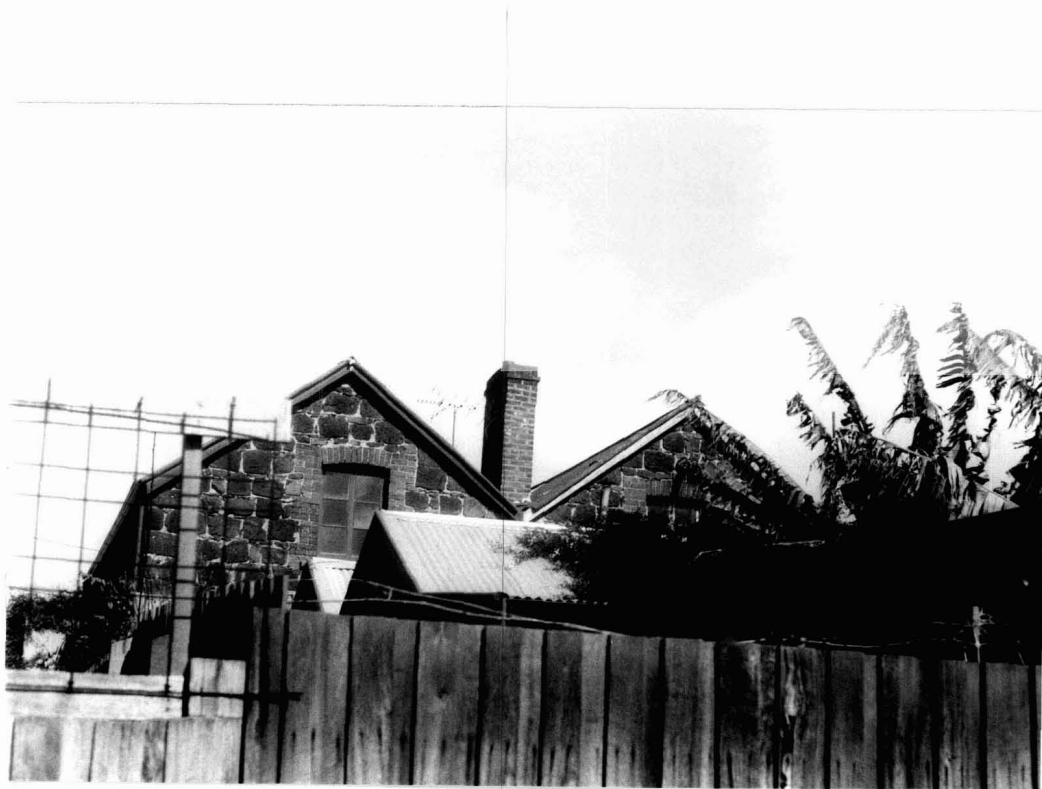
A similar pair of houses built in 1854 can be seen at 266-68 LaTrobe Terrace, Geelong.

Statement of Significance

An 1850's pair of bluestone houses designed in an unusual colonial Gothic style.

References

Register of the National Estate R/01/01.
 Early photograph held at Richmond Historical Society.



Rear View, 1984.