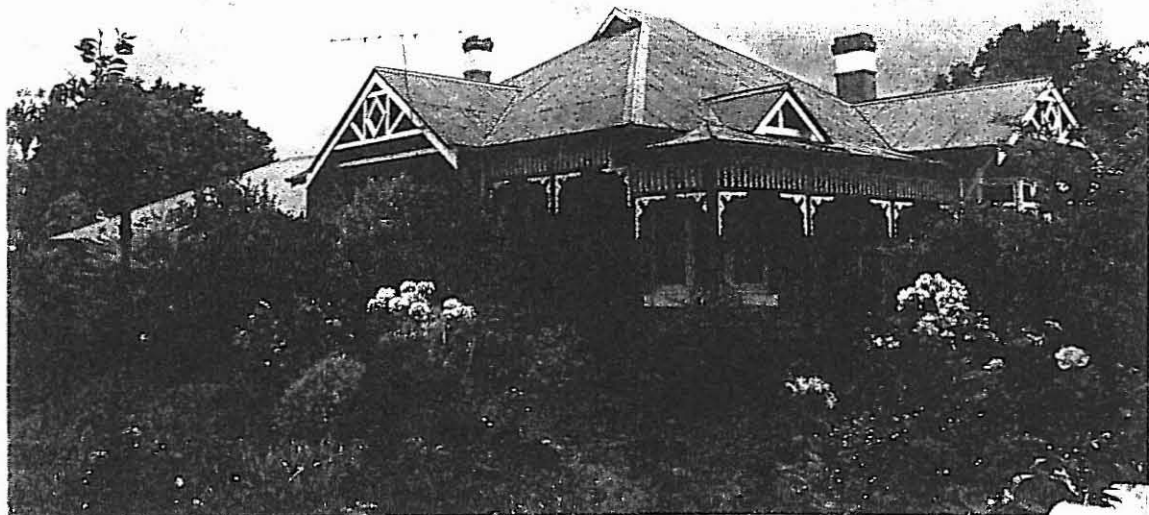


**BACCHUS MARSH HERITAGE STUDY.**

**Ref:** 247

Richard Peterson Architect & Conservation Consultant. Daniel Catrice Historian 1994.

<b><u>NAME:</u></b> ---		
<b><u>ADDRESS:</u></b> 69 Lerderderg Street.		
<b><u>TITLE DETAILS:</u></b>		
<b><u>USE:</u></b> House		
<b><u>CONSTRUCTION DATE:</u></b> 1913.		<b><u>SOURCE:</u></b> 1
<b><u>BUILDER:</u></b> J.G. Wells.		<b><u>SOURCE:</u></b> 1
<b><u>CRITERIA:</u></b> H1; Ar1,3.	<b><u>HISTORIC THEME:</u></b> Townships.	
<b><u>DESCRIPTION:</u></b> STYLE: Edwardian.	<b><u>STORIES:</u></b> 1	<b><u>DETACHED.</u></b>
<b><u>MATERIALS:</u></b> WALLS Brick	<b><u>ROOF</u></b> Iron	<b><u>STRUCTURE</u></b> Lb
<b><u>CONDITION:</u></b> Very good	<b><u>INTACTNESS:</u></b> Good	<b><u>THREATS:</u></b> -
<b><u>SIGNIFICANT INTACT ELEMENTS:</u></b>		
FORM. FACADE. VERANDAH. ROOF FORM. ROOF DECORATION. VERANDAH DECORATION. CHIMNEYS. WALL DECORATION. DOORS. WINDOWS. PAINTWORK SCHEME.		
<b><u>SIGNIFICANCE:</u></b>		
<b><u>TYPE:</u></b> HISTORICAL. ARCHITECTURAL.		
<b><u>LEVEL:</u></b> LOCAL.		
<b><u>DESIGNATION EXISTING:</u></b>		
<b><u>RECOMMENDED CONTROL:</u></b> PLANNING SCHEME. AREA 2.		
<b><u>MAP NO:</u></b> U4.07 & U5.07	<b><u>SURVEY:</u></b> RP	<b><u>DATE:</u></b> 14.2.94 <b><u>NEGS:</u></b> 20.19



**HISTORY:** This brick house was erected in 1913 for Ernest Coe, a local butcher.<sup>1</sup> The builder was T.G. Wells.<sup>2</sup>

**VISUAL DESCRIPTION:** A triple-fronted, tuckpointed red brick, Edwardian house. It has a major gambrel roof from which the right-hand front bay and the left side rear bay project as gables. A verandah returns around the corner to these. The roof extends break pitch at front as a hip. Over this is a decorative gablet. The upper gables jetty deeply on brackets, with unusual timbering flush with the barges, with a diamond pattern. Beneath is a canted bay, its upper section roughcast and with double casements. The verandah has a wavy rail valance and large decorative fretwork brackets. At the corner is a rectangular bay on the diagonal. There is an Edwardian entry door with leadlight, sidelights, fanlight and a rare flyscreen door.

**COMPARATIVE ANALYSIS:** There are 46 Edwardian houses identified in Bacchus Marsh in the Study.

**SIGNIFICANCE:** A characteristic brick Edwardian house built in 1913.

It has local historical significance as a representative embodiment of a way of life and the social values of the years before the first World War. It also is architecturally significant locally as a representative and relatively intact example of its architectural style.

**INTACTNESS:** Good. It appears to have all been clad with bagged mortar and coloured, perhaps with Colortex. The fence and garden are recent. The verandah floor has been replaced with a concrete slab.

**CONDITIONS & THREATS:** Very good.

---

<sup>1</sup> Shire of Bacchus Marsh. *Rate Book*, 1913-14.

<sup>2</sup> *Bacchus Marsh Express*, 29 November 1913.

