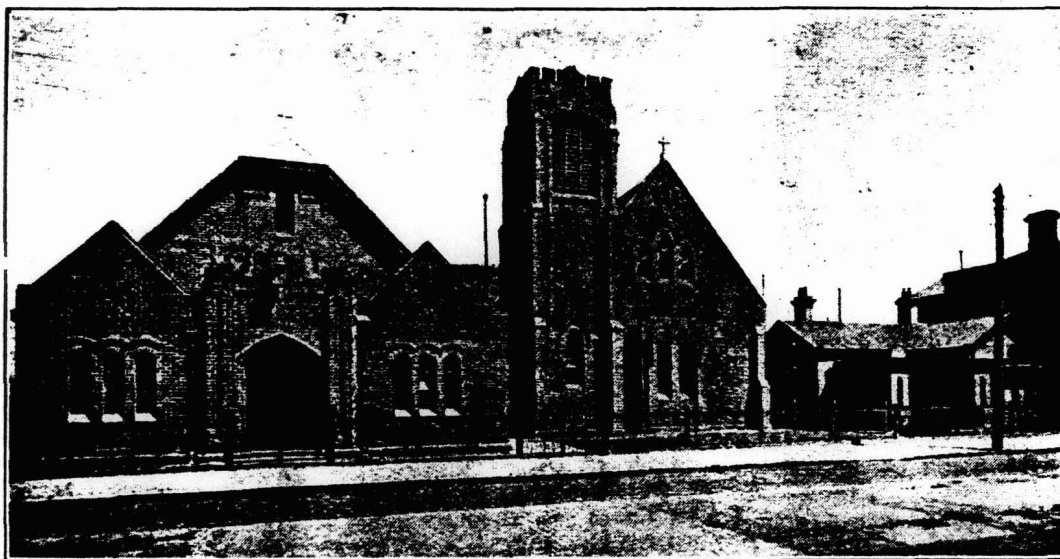


REF.34.
290 & 292
BURNLEY STREET

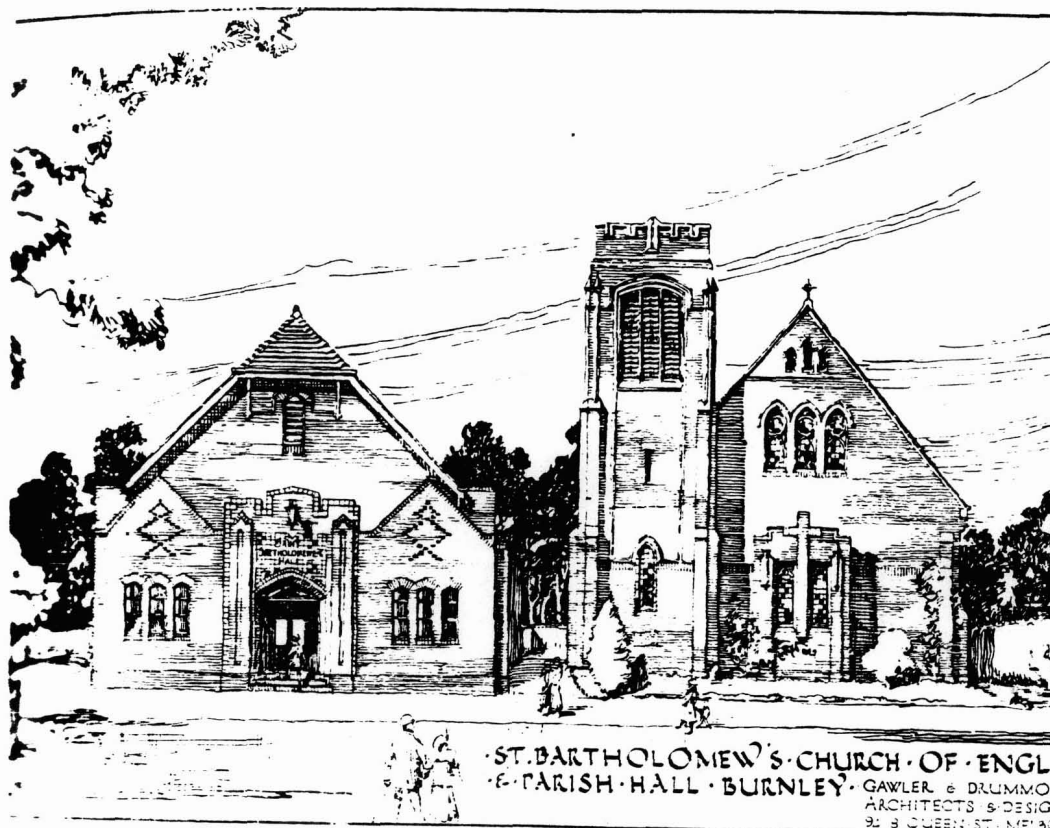


CHURCH, PARISH HALL AND VICARAGE AT BURNLEY, VICTORIA

Alterations by Gawler and Drummond

One always associates the name of the suburb of Burnley with the horticultural gardens of that name, and it seems strange to see so much brick and mortar at this place with no vestige of greenery round it—or indeed within sight. In the suburbs of London, in a country which is less than one fiftieth the extent of Australia, one never sees a church and vicarage unshaded by trees, and yet, in Australia, where shade would be thought to be most welcome to the eyes, if not to the body, it seems to be the one idea of progress to cut down all the trees and the only thing we can think of to take their places is the ugliest and most primitive type of telegraph post that can be imagined. Brick is a handsome building material but it is at its best when relieved by natural flora. The ecclesiastical block in the accompanying illustration is a pleasant piece of designing, harmoniously contrived without being at all monotonous in treatment. The scale of the hall rather gives preference to that building in spite of the tower which distinguishes the neat little church

CONSTRUCTION VIC., NO 592, VOL 23, AUGUST 12, 1927, P1



ST. BARTHOLOMEW'S CHURCH OF ENGLAND
& PARISH HALL BURNLEY. GAWLER & DRUMMOND ARCHITECTS & DESIGNERS
91 & 93 QUEEN ST. MELBOURNE

A PLEASANT ARCHITECTURAL GROUP

Gawler and Drummond, Architects

This is essentially symmetrical although it is, like the church, of Gothic inspiration; but it is an unornamented adaption depending more on the quality of the work than actual Gothic qualities to give it prominence. The materials proposed are evidently brick and tile and the designs are eminently suitable, allowing for the fine variations in texture and colour obtainable in this medium. The entrance to the hall is quite well managed and is accentuated as a central feature by the treatment of the roof above. If any criticism of the church is the more happy in effect. Its very simplicity is its chief charm. The details in the building itself are small and insignificant in appearance, but there can be no fault found with the proportions or the general appearance would not be so satisfactory. The tower is particularly happy in this regard, and the simple treatment of the projecting bay with its large cross is significant and effective.