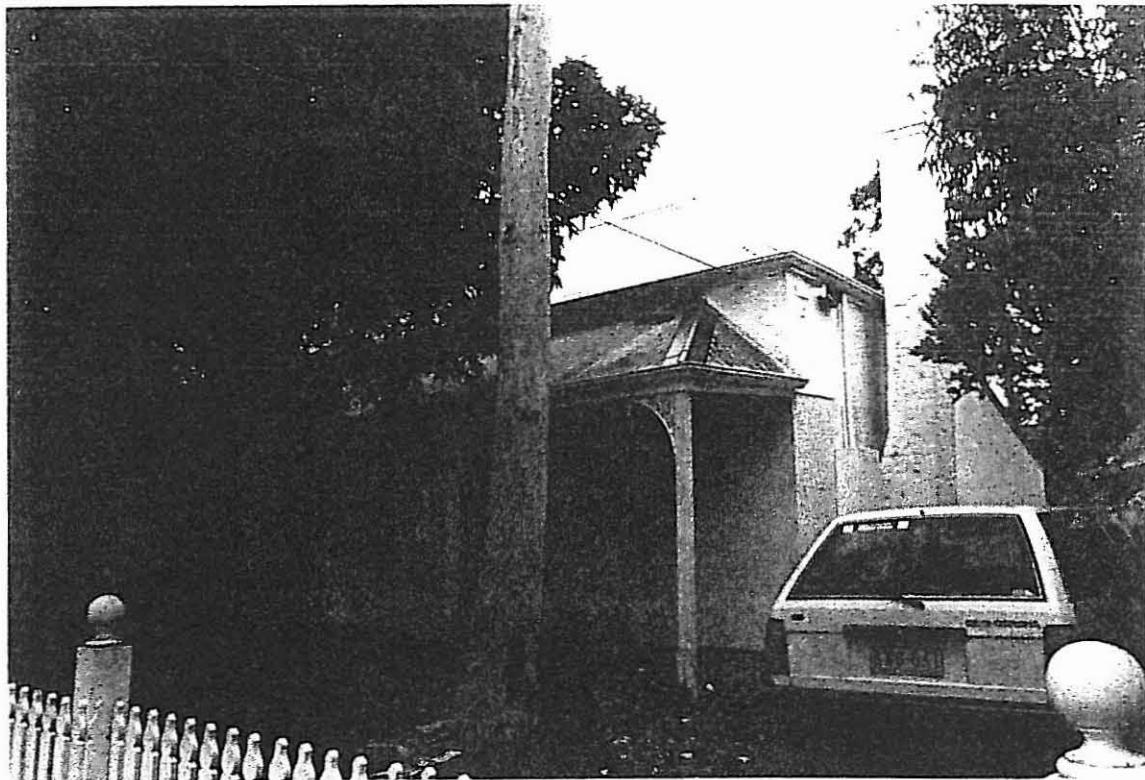


BACCHUS MARSH HERITAGE STUDY.

Ref: 205

Richard Peterson Architect & Conservation Consultant. Daniel Catrice Historian 1994.

<u>NAME:</u> Wilkem.			
<u>ADDRESS:</u> 16 Young Street.			
<u>TITLE DETAILS:</u>			
<u>USE:</u> House.			
<u>CONSTRUCTION DATE:</u> c1867		<u>SOURCE:</u> 1	
<u>CRITERIA:</u> H1,3,6; Ar3.		<u>HISTORIC THEME:</u> Townships.	
<u>DESCRIPTION:</u>	<u>STYLE:</u> Early	<u>STORIES:</u> 1	<u>DETACHED.</u>
<u>MATERIALS:</u>	<u>WALLS:</u> Render	<u>ROOF:</u> Iron	<u>STRUCTURE:</u> Lb
<u>CONDITION:</u> Good	<u>INTACTNESS:</u> Good	<u>THREATS:</u> -	
<u>SIGNIFICANT INTACT ELEMENTS:</u> FORM. FACADE. VERANDAH. VERANDAH DECORATION. CHIMNEYS. DOORS. WINDOWS.			
<u>SIGNIFICANCE:</u>			
<u>TYPE:</u> HISTORICAL. ARCHITECTURAL.			
<u>LEVEL:</u> LOCAL.			
<u>DESIGNATION EXISTING:</u> NTR.			
<u>RECOMMENDED CONTROL:</u> PLANNING SCHEME.			
<u>MAP NO:</u> U4.07	<u>SURVEY:</u> RP	<u>DATE:</u> 31.1.94	<u>NEGS:</u> 17.18 & 19



HISTORY: This cottage was erected *circa* 1867 for Robert Elam. Several prominent citizens lived here, including Sir George Farmer, Christopher Crisp, E. Simpson, and J.R. Crook.¹

VISUAL DESCRIPTION: Double-fronted symmetrical, hip-roofed cement-rendered, early cottage. It has a detached chimney at right, with a tall pot, and a skillion extension at rear. There is a hip timber verandah, with cast-iron lace brackets. In front, is a diamond pattern pre-cast concrete footpath.

COMPARATIVE ANALYSIS: There are sixteen early houses in Bacchus Marsh.

SIGNIFICANCE: A characteristic and relatively intact early masonry cottage built in c1867 and occupied by several prominent Bacchus Marsh figures, including Sir George Farmer, Christopher Crisp, E Simpson and J.R. Crook.

It is of local historical significance as a representative embodiment of a way of life in the late 1860s and of the social values of its subsequent occupants. It demonstrates association with several influential and important local figures and it is a relatively early house in the town.

It is of local architectural significance as a relatively intact representative early cottage.

INTACTNESS: Good. All has been painted gloss white. The fence is recent.

CONDITIONS & THREATS: Good.

¹ Moore and Oomes, *Bacchus Marsh: A Pictorial Chronicle*, p.44; *Bacchus Marsh Express*, 5 August, 1976.