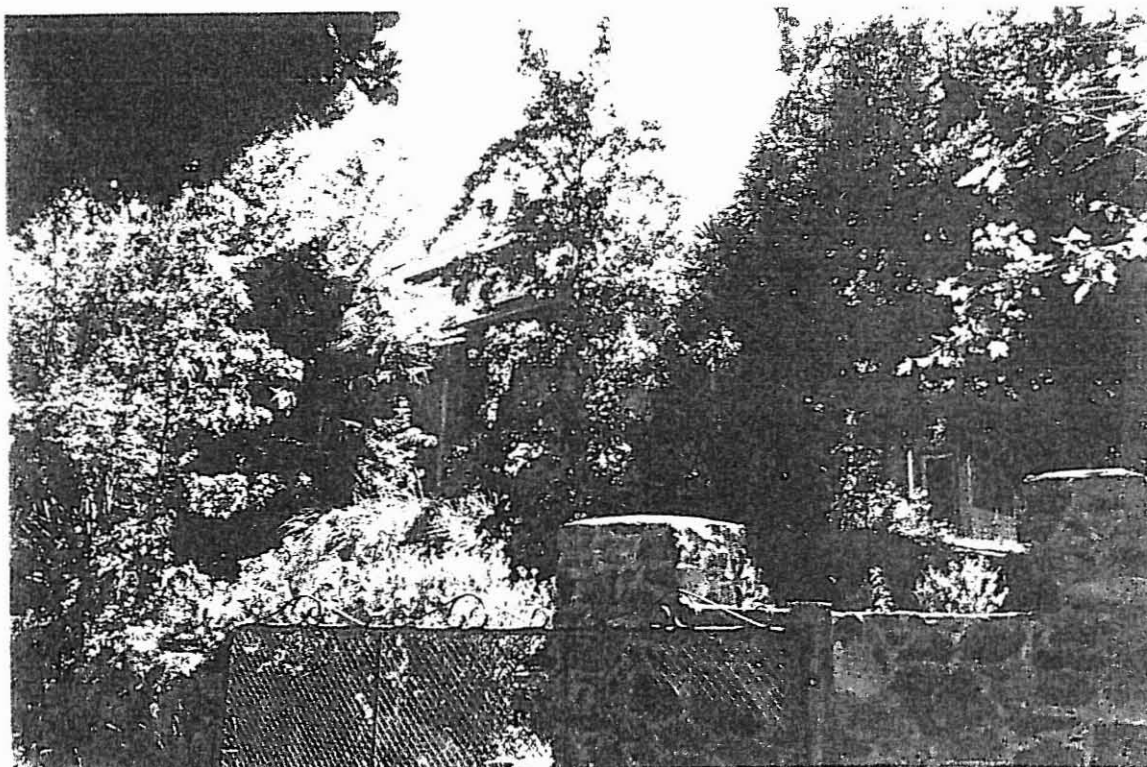


**BACCHUS MARSH HERITAGE STUDY.**

Ref: 185

Richard Peterson Architect &amp; Conservation Consultant. Daniel Catrice Historian 1994.

**NAME:** Pentland**ADDRESS:** 85 Main Street, Stamford Hill.**TITLE DETAILS:****USE:** House**CONSTRUCTION DATE:** 1892**SOURCE:** 1**DESIGNER:** D. A. Little**BUILDER:** T. Taylor**SOURCE:** 1**CRITERIA:** H1,3; Ar1,4.**HISTORIC THEME:** Townships.**DESCRIPTION:** **STYLE:** Italianate **STORIES:** 1 **DETACHED.****MATERIALS:** **WALLS** Brick **ROOF** Iron **STRUCTURE** Lb**CONDITION:** Reasonable **INTACTNESS:** Fair**THREATS:** -**SIGNIFICANT INTACT ELEMENTS:**FORM. VERANDAH. VERANDAH DEC. CHIMNEYS. DOORS. WINDOWS. FENCES  
HEDGES..**SIGNIFICANCE:****TYPE:** HISTORICAL. ARCHITECTURAL.**LEVEL:** LOCAL.**DESIGNATION EXISTING:** Nil**RECOMMENDED CONTROL** PLANNING SCHEME. AREA 1.**MAP NO:** U3.07**SURVEY:** RP**DATE:** 24.1.94**NEGS:** 15.3 & 4.

**HISTORY:** Pentland was erected in 1892 for the Shire Secretary and Engineer, David Armstrong Little. Designed by the owner, the ten room residence attracted favourable comment from the *Bacchus Marsh Express*:

the walls are 18 inches (460mm) thick (some built with a hollow space on the weather side) tuckpointed in front, with bold double windows and central door opening into a wide passage, on either side of which the rooms are situated.... The total result is a substantial and handsome residence.<sup>1</sup>

The contractors were Mr T Taylor, of Bacchus Marsh and a Mr Tolley, a carpenter of Lancefield.

**VISUAL DESCRIPTION:** Double-fronted brick tuck-pointed Italianate house, almost symmetrical, with a hip. Chimneys have abstracted mouldings. The verandah extends around three sides, with cast-iron fine Corinthian posts. There is a random rubble bluestone fence and some garden remnants. Apparently, there is a cavity in the wall on the west (?) side for weathering.

Garden. A simple garden with a central path and stone steps to the front verandah with lawn either side, and a driveway to the east of house at the base of the sloping lawn. Large specimen trees dominate the front lawn, a combination of exotic and natives, with an Italian Cypress at the driveway entrance. A low privet hedge links the driveway to the east boundary. A large Poplar towers over the garden to the east adjacent to a mixed shrubbery along the house.

Plant species include:

<i>Liquidambar styraciflua</i>	Liquidambar
<i>Cupressus sempervirens</i>	Italian Cypress
<i>Crataegus oxycantha</i>	Hawthorn
<i>Brachychiton populneus</i>	Kurrajong
<i>Eucalyptus crenulata</i>	Silver Gum
<i>Populus sp.</i>	Poplar
<i>Cordyline australis</i>	Cabbage Palm
<i>Prunus cerasifera 'Nigra'</i>	Purple leaf Cherry Plum
<i>Agapanthus orientalis</i>	Blue Agapanthus
<i>Rosa sp.</i>	Roses
<i>Palm sp.</i>	
<i>Ligustrum ovalifolium</i>	Hedge Privet

**COMPARATIVE ANALYSIS:** There are 44 late nineteenth century houses in Bacchus Marsh. True cavity walls first appear in Victoria in about 1868. These used metal ties such as tarred hoop-iron straps. Cavity walls appear more generally in the 1880s. Galvanised

<sup>1</sup> *Bacchus Marsh Express* 2 July 1892.

wire ties were introduced in the 1890s. It would be instructive to inspect the ties here. (check)<sup>2</sup>

**SIGNIFICANCE:** A brick elevated Italianate house with stone fence and some garden remnants, designed and built by well-known Bacchus Marsh Shire Engineer and Secretary, D.A. Little in 1892.

It is of historical significance locally as a representative embodiment of a confident way of life in the early 1890s, just before the economic collapse. It is also significant for its association with Little, who was an important and influential figure in the town.

Pentland is also of architectural significance locally as a representative example of the late Italianate domestic style. It is also significant for its incorporation of a relatively early cavity wall in the construction. The garden is also significant.

**INTACTNESS:** Fair. Brickwork is all painted, the cast-iron verandah valance and brackets have been removed and there are infills to the verandah in timber.

**CONDITIONS & THREATS:** Reasonable.

---

<sup>2</sup> Miles Lewis, *Physical Investigation of a Building*, p.36.