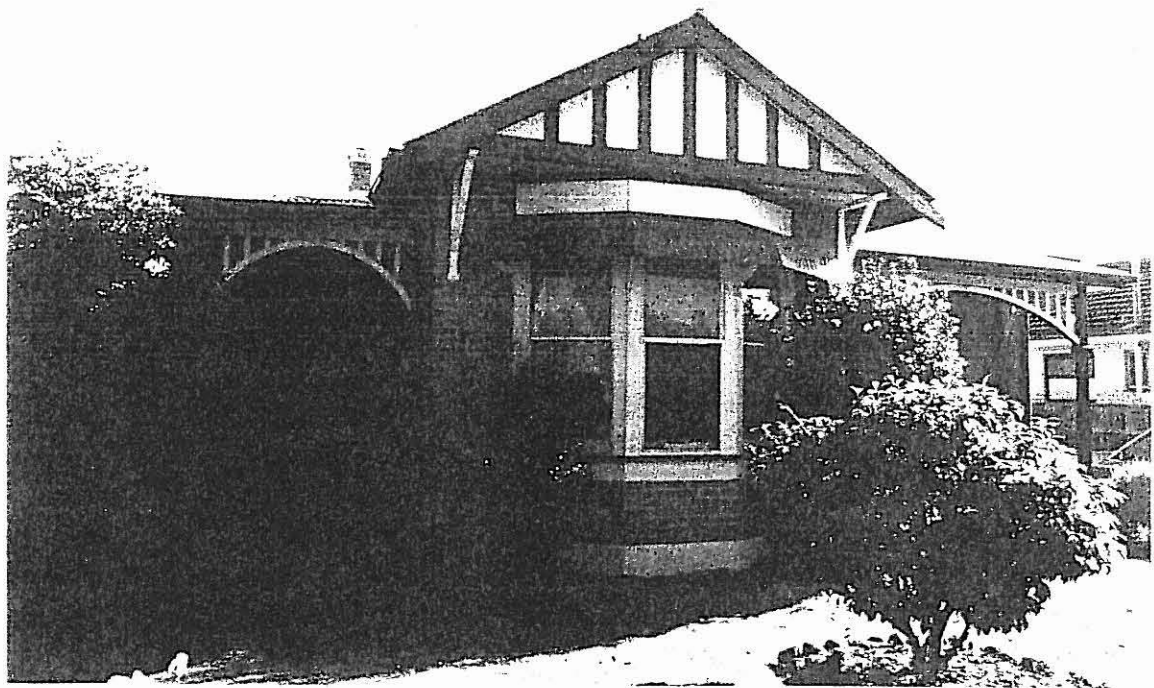


**BACCHUS MARSH HERITAGE STUDY.**

Ref: 163

Richard Peterson Architect & Conservation Consultant. Daniel Catrice Historian 1994.

<b><u>NAME:</u></b> Ivison.			
<b><u>ADDRESS:</u></b> 239 Main Street.			
<b><u>TITLE DETAILS:</u></b>			
<b><u>USE:</u></b> House			
<b><u>CONSTRUCTION DATE:</u></b> 1908	<b><u>SOURCE:</u></b> 1		
<b><u>CRITERIA:</u></b> H1,3; Ar 1	<b><u>HISTORIC THEME:</u></b> Townships.		
<b><u>DESCRIPTION:</u></b> STYLE: Edwardian	<b><u>STORIES:</u></b> 1 DETACHED.		
<b><u>MATERIALS:</u></b> WALLS Brick	<b><u>ROOF:</u></b> Iron	<b><u>STRUCTURE:</u></b> Lb	
<b><u>CONDITION:</u></b> Excellent.	<b><u>INTACTNESS:</u></b> Very good	<b><u>THREATS:</u></b> -	
<b><u>SIGNIFICANT INTACT ELEMENTS:</u></b> FACADE. VERANDAH. ROOF FORM. PLAN. WALL DECORATION. DOORS. WINDOWS. PAINTWORK SCHEME.			
<b><u>SIGNIFICANCE:</u></b>			
<b><u>TYPE:</u></b> HISTORICAL. ARCHITECTURAL.			
<b><u>LEVEL:</u></b> LOCAL.			
<b><u>DESIGNATION EXISTING:</u></b> Nil.			
<b><u>RECOMMENDED CONTROL:</u></b> PLANNING SCHEME.			
<b><u>MAP NO:</u></b> U4.07	<b><u>SURVEY:</u></b> RP	<b><u>DATE:</u></b> 19.1.94	<b><u>NEGS:</u></b> 13.14



**HISTORY:** This house was erected in 1908 for T.H. Pearce, son of the farmer and businessman, Thomas George.<sup>1</sup> T.H. Pearce conducted the Pearce Bros. Store, which Thomas George and his brother, Ebenezer (refs: 167 & 168), established in 1881 alongside the Court House Hotel.<sup>2</sup> T.H. Pearce retired in October 1936. He died here, aged 63 on January 17, 1940.

**VISUAL DESCRIPTION:** A most compact triple-fronted Edwardian asymmetrically brick house. It has a high hip roof, with the centre bay set forward as a gable. The hip descends break-pitch over verandahs in the angle on each side. At left, this is at the side and extends back to a side gable roof. The upper gable is timbered roughcast and projects on timber brackets. Beneath is a canted bay window, with a scale pattern pressed metal curved hood supported by curved quadrant timber brackets. Verandahs have shallow curved rail valances on Doric timber posts. That at left has an oculus window. There are flat render bands at cill, base level and over the bay. There is a segmental head over the window pairs and two metal hoods over the right hand side windows. Next to these, is an early slotted side fence. There are terra-cotta pots to the front chimney.

**COMPARATIVE ANALYSIS:** There are 44 Edwardian houses identified in the Study, but this compact and complex design is unique. It is most similar to 48A Graham Street (ref: 130) and 165 Main Street (ref: 165).

**SIGNIFICANCE:** A most compact Edwardian brick house of an interesting design built for T.H. Pearce, the storekeeper, 1908.

It is of local historical significance as a representative embodiment of the way of life in the Edwardian period and for its association with Pearce, an important local figure. With the other two Pearce houses (refs: 167 & 168) it forms a group associated with the family.

It is also of local architectural significance as an interesting and intact representative example of the Edwardian domestic style.

**INTACTNESS:** Very good. The verandah floor has been replaced with a concrete slab. The fence was replaced in the 1950s.

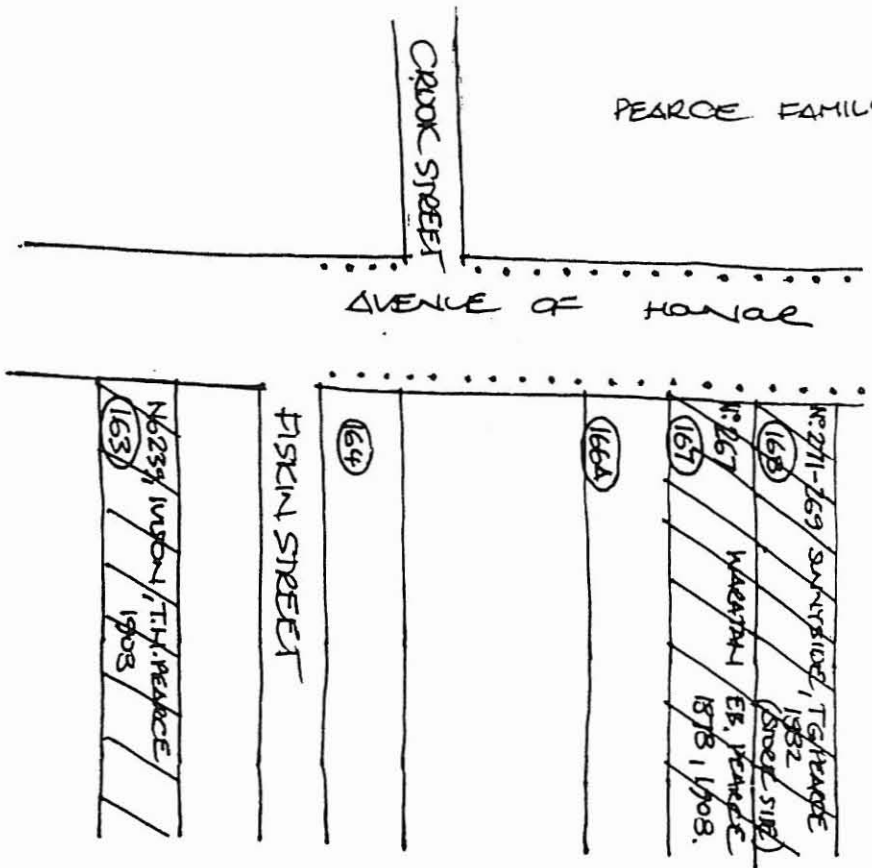
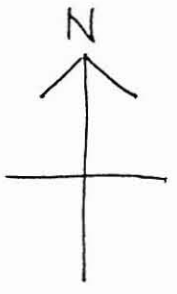
**CONDITIONS & THREATS:** Excellent.

---

<sup>1</sup> *Bacchus Marsh Express*, 14 November 1908.

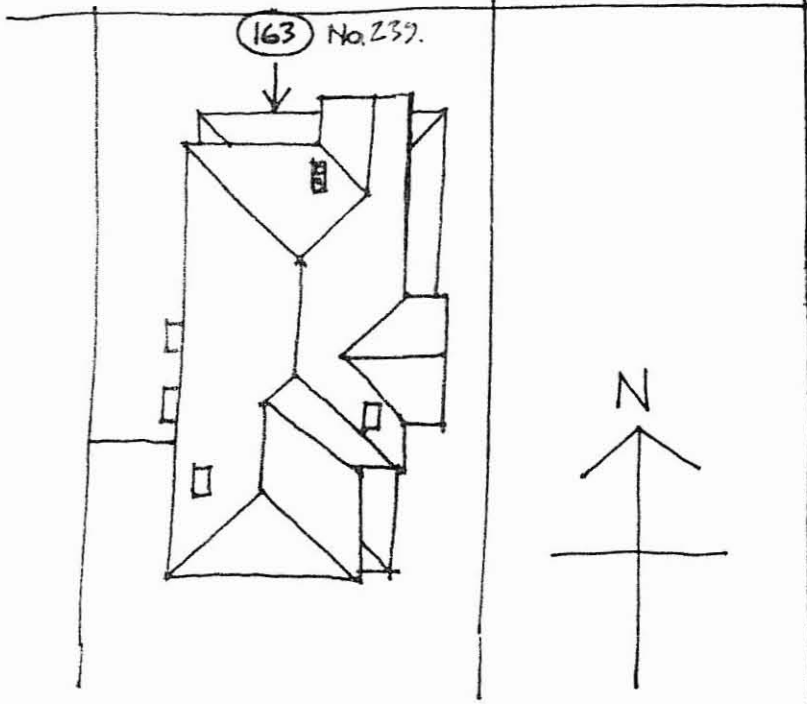
<sup>2</sup> Moore and Oomes, *Bacchus Marsh: A Pictorial Chronicle*, p.39.

PEAROE FAMILY HOUSES

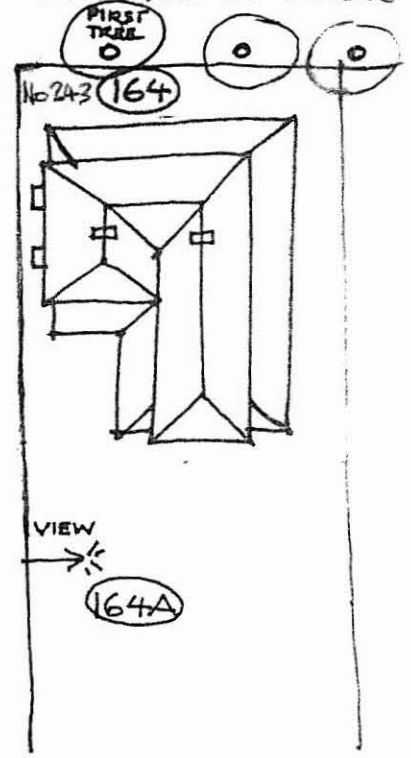


MAIN STREET

AVENUE OF HONOR



FISKIN STREET



(164)  
(INTEREST)