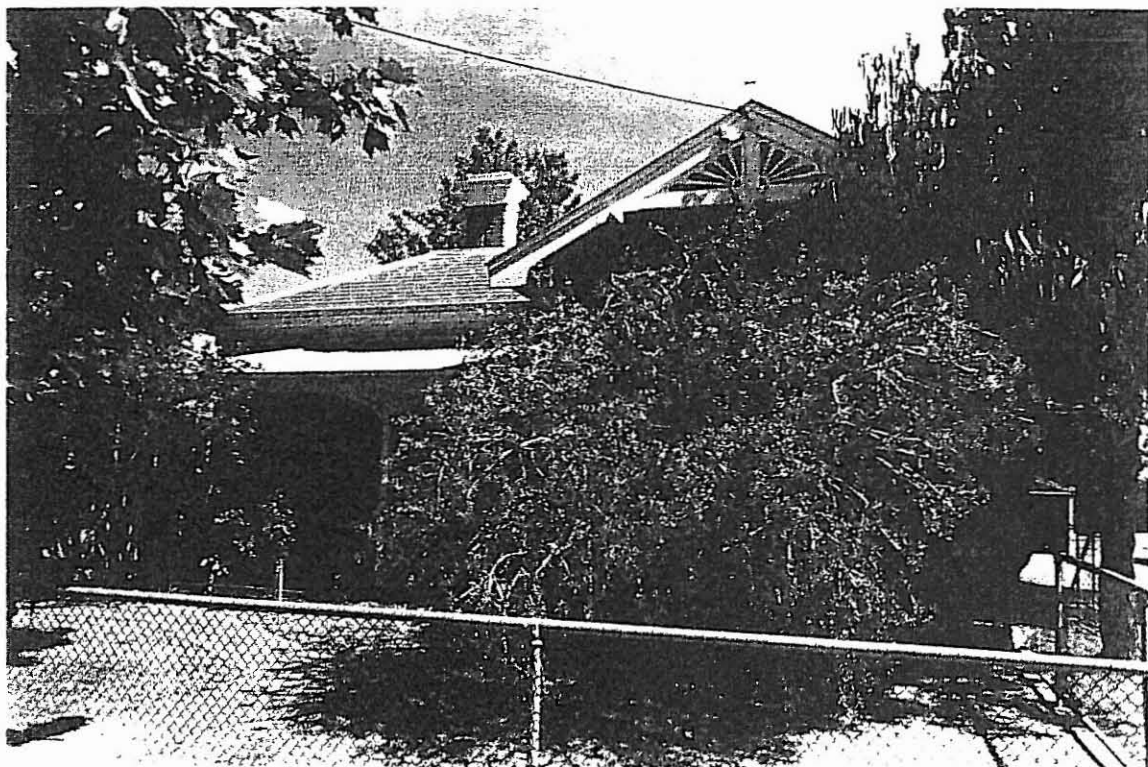


**BACCHUS MARSH HERITAGE STUDY.**

Ref: 150

Richard Peterson Architect &amp; Conservation Consultant. Daniel Catrice Historian 1994.

<b>NAME:</b> -			
<b>PREVIOUS NAME:</b> Police residence.			
<b>ADDRESS:</b> 123? Main Street (between Police Station and Court House).			
<b>TITLE DETAILS:</b>			
<b>USE:</b> House			
<b>PREVIOUS USE:</b> Police residence.			
<b>SIGNIFICANT DATE:</b> 1890-1930		<b>CONSTRUCTION DATE:</b> 1890 (lock-up: 1858)	
<b>SOURCE:</b> 2			
<b>DESIGNER:</b> S.E. Bindley (H.R. Bastow?)		<b>BUILDER:</b> John Ferguson	
<b>SOURCE:</b> 2,3			
<b>CRITERIA:</b> H2,4; Ar3.		<b>HISTORIC THEME:</b> Governing.	
<b>DESCRIPTION:</b>	<b>STYLE:</b> Late Victorian	<b>STORIES:</b> 1	<b>DETACHED.</b>
<b>MATERIALS:</b> WALLS Brick	<b>ROOF</b> Slate	<b>STRUCTURE</b> Lb.	
<b>CONDITION:</b> Good.	<b>INTACTNESS:</b> Very good.	<b>THREATS:</b> -	
<b>SIGNIFICANT INTACT ELEMENTS:</b>			
MATERIALS. FORM. FACADE. VERANDAH. ROOF FORM. PLAN/LAYOUT. USE.			
ROOF DECORATION. VERANDAH DECORATION.			
CHIMNEYS. WALL DECORATION. DOORS. WINDOWS.			
UNPAINTED FINISH. OUTBUILDINGS.			
<b>SIGNIFICANCE:</b>			
<b>TYPE:</b> HISTORICAL. ARCHITECTURAL.			
<b>LEVEL:</b> LOCAL.			
<b>DESIGNATION EXISTING:</b> Nil			
<b>RECOMMENDED CONTROL:</b> PLANNING SCHEME. AREA 1.			
<b>MAP NO:</b> U4.07	<b>SURVEY:</b> DC & RP	<b>DATE:</b> 15.1.94	<b>NEGS:</b> 12.5



**HISTORY:** A sandstone barracks and stable were built in Main Street in 1858, when the police establishment was moved from its original site at the Police Reserve, Maddingley (now Maddingley Park).<sup>1</sup> Also constructed was a sandstone lock-up, reputedly relocated from the Maddingley reserve. The barracks were replaced by a new police residence, erected in 1890 to the design of Public Works Department architects, S.E. Bindley and H.R. Bastow.<sup>2</sup> The contractor was John Ferguson.<sup>3</sup> After 1890, the sandstone lock-up was used as an office and storeroom. In 1930, a new police station was opened for the local constabulary, which then numbered three officers.<sup>4</sup>

**VISUAL DESCRIPTION:** A double-fronted polychromatic brick house, characteristic of residences for government officials, designed by the Public Works Department of Victoria in the late nineteenth century, but with the details inimitable to the important architect S.E. Bindley. It has a hip roof in slate with the right-hand bay set forward as a gable. Over this the eaves project supported on exposed purlins with diamond roofline ends. There is a rail and finial infilled with a fretwork chrysanthemum motif. Below is a pair of segmental head windows. In the angle and continuing on the left hand side and rear is a timber skillion verandah. It has decorative fretwork brackets in the form of one chrysanthemum petal. Brickwork is red body bricks with cream and black dyed dressings. There are boards at cill and window-head height and deeply moulded chimney tops. One the rear boundary is a rectangular gable roofed stone lock-up with a skillion verandah.

**COMPARATIVE ANALYSIS:** Bindley also designed Myrmiong Primary School in 1905 (ref: 273). Other Bindley designs at this time include: Yarraville State School (1889), Parkville Post Office (1885), Melton Court House (1892). None are directly comparable to this building. The other government residence in Bacchus Marsh, is the school teacher's (ref: 240).

**SIGNIFICANCE:** A polychromatic brick eclectic late Victorian police residence (probably) designed by the important architect S.E. Bindley, of the Public Works Department, built in 1890 and closed in 1930. A sandstone lock-up survives at the rear, built in 1858, possibly with materials used earlier at Maddingley.

It is of local historical significance for its association with the development of law and order in Bacchus Marsh and in demonstrating the imposition of government action on the community.

<sup>1</sup> Moore and Oomes, *Bacchus Marsh: A Pictorial Chronicle*, p.40.

<sup>2</sup> "Survey of Historic Police Buildings", File No. 83/5001, Historic Buildings Branch, Department of Planning and Development, Contract details VPRS 977. Both signatures appear on the architectural drawings.

Precise attribution of the designer of PWD buildings is problematic. H.R. Bastow was Chief Architect and is unlikely to be the actual designer. Bindley was responsible for this region from 1889 and this is likely to have been an early design by him.

<sup>3</sup> *Bacchus Marsh Express*, 1 February 1890.

<sup>4</sup> *Victoria Police Gazette*, 2 June 1930.

It is of architectural significance as local example of a building type and also as a rare example in Bacchus Marsh of the work of an important architect of the period.

**INTACTNESS:** Very good. Bricks have been painted charcoal grey and the finial has been truncated. The chain-link fence is sympathetic.

**CONDITIONS & THREATS:** Good. Rising damp, efflorescence and exfoliation affect brickwork, the lock-up is in poor condition. The site is now privately owned.

(148)

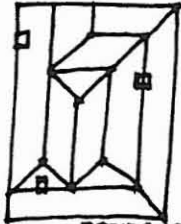
GIBSON ROAD

(149)

150

MAIN STREET

No 123 (150)



RESIDENCE



LOCK-UP

(151)

