

BACCHUS MARSH HERITAGE STUDY.

Ref: 147

Richard Peterson Architect & Conservation Consultant. Daniel Catrice Historian 1994.

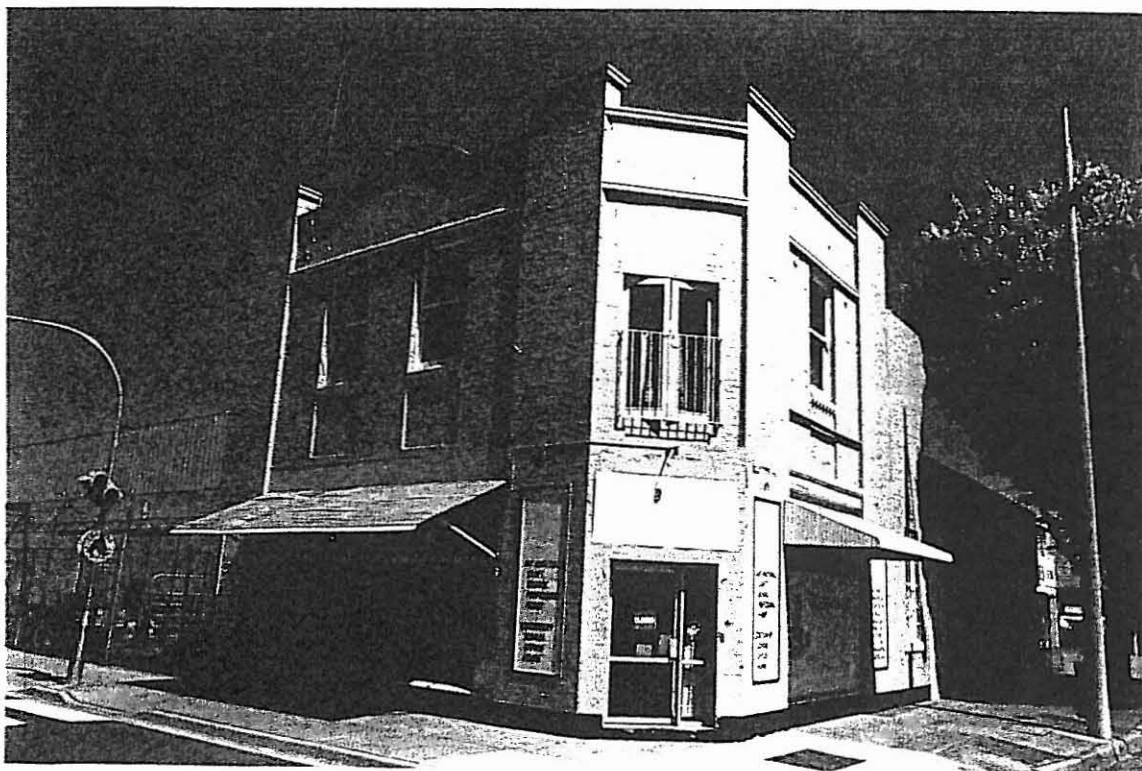
NAME: Scribbles Inc. Art and Craft Supplies.**PREVIOUS NAME:** P.S. Carey Motors. Simon's Garage.**ADDRESS:** 105 Main Street (SW cnr Grant Street).**TITLE DETAILS:****USE:** Shop**PREVIOUS USE:** Motor garage and apartment.**SIGNIFICANT DATE:** **CONSTRUCTION DATE:** 1913 **SOURCE:** 1**DESIGNER:** Alec S. Eggleston.**CRITERIA:** H2,3,6; Ar1. **HISTORIC THEME:** Townships.**DESCRIPTION:** **STYLE:** Edwardian **STORIES:** 2 **DETACHED.****MATERIALS:** **WALLS** Brick **ROOF** Iron **STRUCTURE****CONDITION:** Good **INTACTNESS:** Fair **THREATS:** Road widening?**SIGNIFICANT INTACT ELEMENTS:**

FACADE.

PARAPET DECORATION.

WINDOWS.

CONTEXT. 146, 148, 149.

SIGNIFICANCE:**TYPE:** HISTORICAL. ARCHITECTURAL.**LEVEL:** REGIONAL.**DESIGNATION EXISTING:** Nil**RECOMMENDED CONTROL:** PLANNING SCHEME. AREA 1.**MAP NO:** U4.07 **SURVEY:** DC & RP **DATE:** 15.1.94 **NEGS:** 12.2

HISTORY: Simon's Garage was built at the corner of Main and Grant Streets in 1913 to the design of Melbourne architect, Alec S. Eggleston.¹ In 1903, Herbert and Walter Simon began building "Monarch" bicycles and later, Monarch motor cycles in a workshop on their father's orchard (ref: 88A). The brothers moved into the two-storey premises on the Grant Street corner in September 1913, giving the township its first motor garage and service station.²

Situated on the Melbourne-Ballarat road, a thoroughfare much frequented by motorists, Simon's Garage provided a range of automotive services:

the building is divided into two sections, the front portion containing a well-appointed show-room for cycles, motor-cycles, motors, and cycle-cars...the upstairs portion is one large room...intended to be used for enamelling work. This room opens on to a 7' x 7' (2.1x2.1m) landing, from which a view of the workroom below can be gained through a double door, cut "stable" fashion. This permits supervision of work without coming downstairs...The workroom is at the rear of the showroom, but of single-storey.³

In 1948, the premises were sold to P.S. Carey (ref: 146) who later acquired the adjoining premises in Main Street to create the then largest car dealership in Bacchus Marsh, for General Motors. At this time the ground floor became a showroom for new vehicles. The first storey of the corner building was converted to an apartment for the family. This was the childhood home of Peter Carey, the Booker Prize-winning novelist. The business and Bacchus Marsh itself were the source material for several novels and short stories.⁴

P.S. Carey Motors closed after 1980⁵ and it became a shop.

VISUAL DESCRIPTION: A two-storey Edwardian brick commercial buildings, with a parapet. It has two bays to Main Street and one bay to Grant Street with a splayed corner. There is a Voyseyesque parapet with a frieze defined by mouldings between corner piers which project above the frieze, capped by another moulding. The parapet to Main Street is rounded. Windows are in recessed panels with toothed brick cills. There are large display timber frame windows at ground level to both fronts.

COMPARATIVE ANALYSIS: The earliest known motor garage in Victoria survives in Melbourne at 735 Glenferrie Road, Hawthorn. It was designed by A Chris A. Cowper architect and built in 1911. This is the second earliest and the earliest in country Victoria. Later garages include Muir & Robbs, The Big Garage, Bairnsdale (1923) and Willaura

¹ *Bacchus Marsh Express*, 6 September 1913.

² Moore and Oomes, *Bacchus Marsh: A Pictorial Chronicle*, p.83.

³ *Bacchus Marsh Express*, 6 September 1913.

⁴ "Home and Away", *The Sunday Age*, 29 January 1995, "Agenda", p.5 and "American Dreams", Peter Carey, *The Fat Man in History*, Faber and Faber, London 1980.

⁵ Personal communication with Gwyn Moore, BMDHS.

Motors, Willaura (1929).⁶ Four former garages are identified in the Shire. Also: P.S. Carey Motors (1938, ref: 146), Muir & Robb's Garage (1921, ref: 190), and Jock Barton's Panel Works (no date, ref: 153). Eggleston also designed 105 Main Street (1913, ref: 167) in the same year.

SIGNIFICANCE: A two-storey brick Edwardian building which was the first known purpose-built motor garage in country Victoria, the second in the State and the earliest in Bacchus Marsh and remained a garage from 1913 until 1980. From 1938, its first floor apartment was the childhood home of Peter Carey, the internationally renowned Booker Prize-winning novelist.

It has historical significance regionally as the pioneering building of this type and represents a rare representative embodiment of the motoring world of over eighty years ago. It is also historically significant for its association with an important and influential person, in Peter Carey.

Finally, it is architecturally significant as an example of a building type, a very early motor garage, although altered.

INTACTNESS: All brickwork has been painted, Art Nouveau *bas relief* decoration to frieze has unfortunately been removed.

First floor window cills have been raised, and corner window heightened. The cantilevered canopy has been removed and lightweight raked metal canopies installed. The corner shopfront has been replaced with aluminium and lowered. The Grant Street display window has been painted over. The interior is relatively intact.

CONDITIONS & THREATS: Good. Road widening?

⁶ Celestina Sagazio, "Motor Garages Study" May 1991.