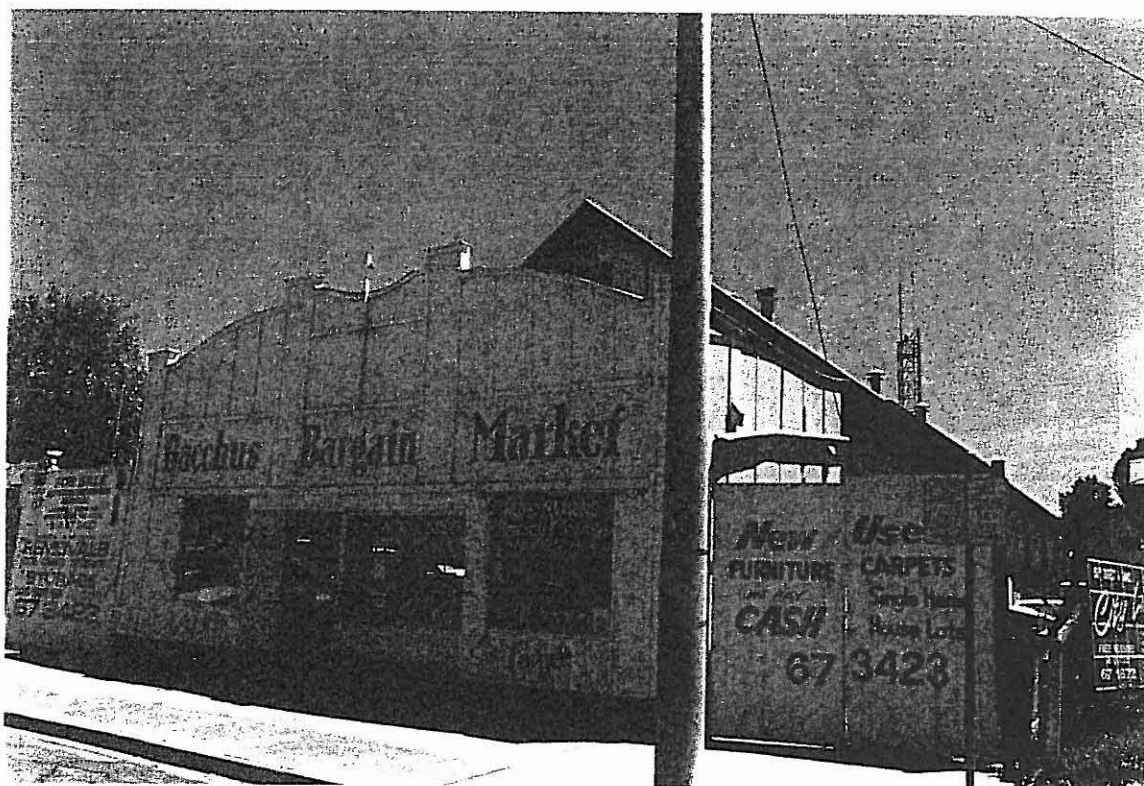


BACCHUS MARSH HERITAGE STUDY.

Ref: 144

Richard Peterson Architect & Conservation Consultant. Daniel Catrice Historian 1994.

NAME: Bacchus Bargain Market.		
PREVIOUS NAME: Tivoli Theatre. Landsberg Hall. Landsberg Theatre. Astor Theatre.		
ADDRESS: 3-5(?) Grant Street.		
TITLE DETAILS:		
USE: Second hand dealer.		
PREVIOUS USE: Picture Theatre.		
CONSTRUCTION DATE: 1927	SOURCE: 1	
DESIGNER: Cornelius L.T. van Alkemade	BUILDER: Cornelius L.T. van Alkemade	
SOURCE: 2		
CRITERIA: H1,2; Ar3; So3.	HISTORIC THEME: Township/Community life.	
DESCRIPTION:	STORIES: 1	DETACHED.
MATERIALS: WALLS Asbestos Cement	ROOF Iron	
STRUCTURE Stud, Trusses.		
CONDITION: Reasonable	INTACTNESS: Good	THREATS: -
SIGNIFICANT INTACT ELEMENTS:		
FORM. FACADE. USE. PARAPET DECORATION. INTERIORS.		
SIGNIFICANCE:		
TYPE: HISTORICAL.		
LEVEL: REGIONAL.		
DESIGNATION EXISTING: Nil		
RECOMMENDED CONTROL: RNE. PLANNING SCHEME. AREA 1.		
MAP NO: U3.07 & U4.07	SURVEY: DC & RP	DATE: 5.1.94
		NEGS: 11.26



HISTORY: Opened on 11 June 1927 as the Tivoli Theatre, this building was a centre of social activity in the township, combining facilities for the projection of moving pictures and a dance floor specially constructed to carry the weight of waltzing couples.¹ The theatre was designed and built by Cornelius L.T. van Alkemade for a local entrepreneur, George Muir (refs: 143 & 190). Each of the 800 seats were occupied for the opening night entertainments, which included a demonstration of the "Panatropé", an "electrically driven contrivance" said to outrival all live orchestras.² It was also known as Landsberg Hall and Landsberg Theatre.

In 1938, George Kirby of Sunshine Pictures Ltd. acquired the Tivoli Theatre, and after renovations, he re-opened the cinema as the 450 seat Astor Theatre.³ Kirby managed the theatre for a further twenty-years. The final screening took place on 22 February 1964.⁴

VISUAL DESCRIPTION: Large timber hall clad internally and externally with asbestos cement. It has a gabled roof facing Grant Street, in front of which is a lower gabled foyer, with a weakly Baroque wavy parapet and shopfronts either side of the entrance. The interior is very plain. It includes a projection booth located between foyer and hall.

COMPARATIVE ANALYSIS: No statewide comparative survey of cinemas or theatres has been undertaken, however this very intact simple cinema may be of state significance.

SIGNIFICANCE: A former unpretentious, but very intact timber country cinema built in 1927 and operating until 1964.

It has regional historical significance as a representative embodiment of social values and the way of life of the late 1920s. It is associated with developments in community life in entertainment.

It is of regional architectural significance as an intact survival of a building type.

Finally, it is of social significance as a traditional community focus and meeting place in Bacchus Marsh.

INTACTNESS: Excellent, particularly the interior.

CONDITIONS & THREATS: Good. The building appears to have a comparatively secure future in its present ownership. A proposal was recently floated to return it to cinema use.⁵

¹ "Landsburg Theatre" Local History File, BMDHS.

² *Bacchus Marsh Express*, 11 June 1927.

³ *Ibid*, 3 September 1938.

⁴ *Ibid.*, 22 February 1964.

⁵ *Herald Sun*, 19 May, 1993, p.7.