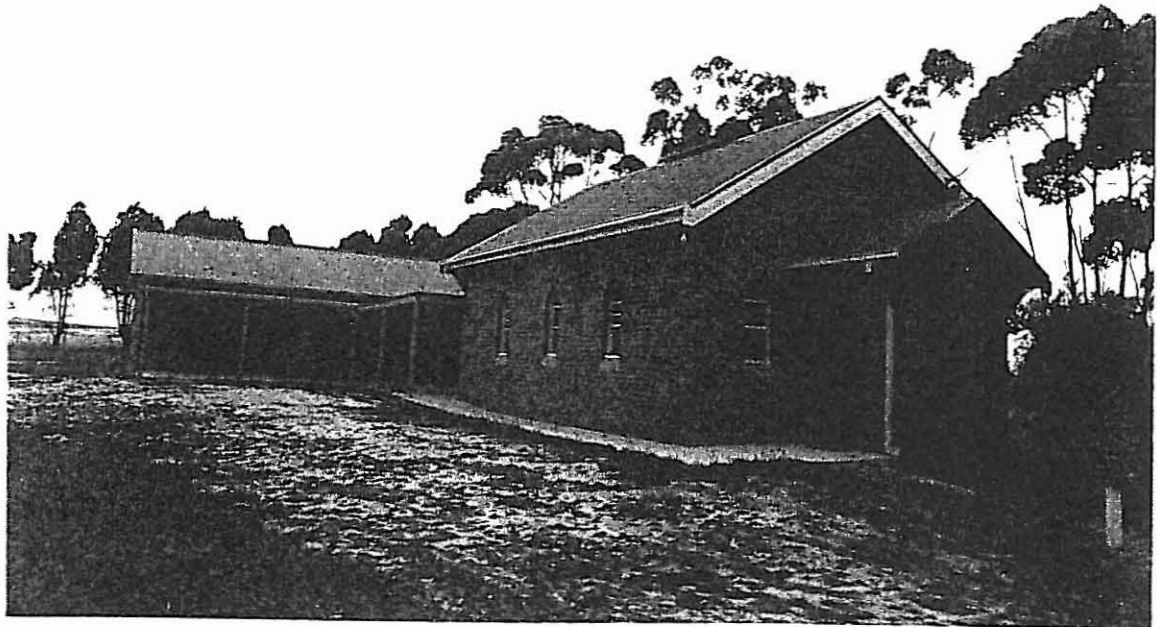


BACCHUS MARSH HERITAGE STUDY.

Ref: 26

Richard Peterson Architect & Conservation Consultant. Daniel Catrice Historian 1994.

NAME: Thelma Ross Memorial Church.**PREVIOUS NAME:****ADDRESS:** Rowsley-Exford Road, Parwan South.**TITLE DETAILS:****USE:** Church**CONSTRUCTION DATE:** 1940**SOURCE:** 1**BUILDER:** E.W Jones**CRITERIA:** H2: S03**HISTORIC THEME:** Community life.**DESCRIPTION:** STYLE: EE Gothic STORIES: 1 DETACHED.**MATERIALS:** WALLS Brick ROOF Steel STRUCTURE Lb.**CONDITION:** Excellent INTACTNESS: Good THREATS: -**SIGNIFICANT INTACT ELEMENTS:****SIGNIFICANCE:****TYPE:** HISTORICAL. SOCIAL.**LEVEL:** LOCAL.**DESIGNATION EXISTING:** Nil**RECOMMENDED CONTROL:** PLANNING SCHEME.**MAP NO:** R2.06 **SURVEY:** RP **DATE:** 21.12.93 **NEGS:** 2.5; 1012.9

HISTORY: Thelma Ross Memorial Church was officially opened on 12 May, 1940.¹ The dedication ceremony was attended by the Shire Secretary and several councillors including the Shire President. Also in attendance, Alex Ross, who had donated money to build the church as a memorial to his late wife, Thelma. The builder was E.W. Jones.² The furnishings were gifts from members of the Parwan South congregation.³

VISUAL DESCRIPTION: A 1940s Early English Gothic red brick church. It has three bays, a lancet to each bay. The porch has pointed doors at sides between lancets. There were chain-linked porch gates.

COMPARATIVE ANALYSIS: There are a total of ten churches identified in the Study, of these, six are Early English in style. As an isolated twentieth century Early English Gothic Church, this is most comparable to St George's Balliang, which is architecturally more interesting.

SIGNIFICANCE: An Early English Gothic plain brick church built in 1940 as a memorial from Alex Ross to his wife.

It is of local significance for its association with the religious development of the Parwan South community and of local social significance as a local community meeting place and focus.

INTACTNESS: Good. There is a recent sympathetic addition at the rear and a gable-roofed timber outbuilding.

CONDITIONS & THREATS: Excellent.

¹ *Bacchus Marsh Express* 18 May, 1940.

² *Ibid.*

³ Moore & Oomes, *Bacchus Marsh: A Pictorial Chronicle* p.159.