

BACCHUS MARSH HERITAGE STUDY.

Ref: 6

Richard Peterson Architect & Conservation Consultant. Daniel Catrice Historian 1994.

NAME: Balliang Primary School No.3630.

PREVIOUS NAME: Staughton Vale Estate State School.

ADDRESS: Balliang Road, Balliang.

TITLE DETAILS:

USE: School.

SIGNIFICANT DATE: 11.1910 **CONSTRUCTION DATE:** 10.5.1945 **SOURCE:** 1

CRITERIA: H1, 2; So 1,2 **HISTORIC THEME:** Townships, Community life

DESCRIPTION: **STYLE:** Modern **STORIES:** 1 **DETACHED.**

MATERIALS: **WALLS** Timber **ROOF** Iron **STRUCTURE** Stud.

CONDITION: Very good **INTACTNESS:** Very good **THREATS:** Closure

SIGNIFICANT INTACT ELEMENTS:

MATERIALS. FORM. ROOF FORM.

CHIMNEYS.

OUTBUILDINGS.

PLANTING FORMATION.

SIGNIFICANCE:

TYPE: HISTORICAL. ARCHITECTURAL. SOCIAL.

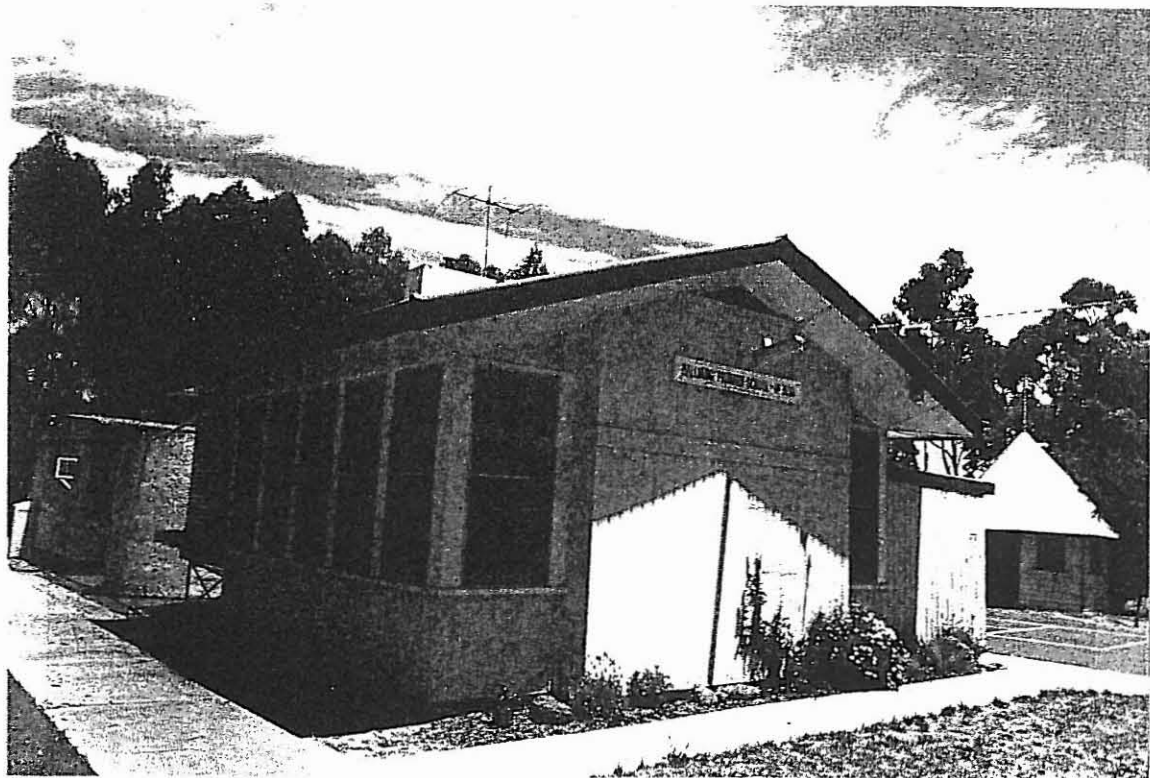
LEVEL: LOCAL.

DESIGNATION EXISTING: Nil.

RECOMMENDED CONTROL: PLANNING SCHEME.

MAP NO: R1.07 **SURVEY:** RP, JS **DATE:** 19.12.1993

NEGS: 1.6, 1010.37 & 1011.1 & 2



HISTORY: Balliang Primary School No.3630 proposed by the Balliang Progress Association and was opened in November 1910 to provide elementary education to the children of settlers on the Staughton Vale Estate.¹ The present school buildings, excluding the octagonal shelter pavilion, were built in 1945 to replace the original school, which had been destroyed by fire on 28 June of the previous year.² The reconstructed school was opened on 5 October 1945. The present building was erected for £607 (\$1,214), and opened by Hon. H. T. Holloway on 10 May 1945. The octagonal sheltershed presumably survives from 1910.³ An LTC classroom was added later.

VISUAL DESCRIPTION: A timber rectangular gable-roofed schoolroom. It has deep eaves which are lined on an angle at the gable ends. There is a broad brick rendered chimney at the rear and a cupboard unit facing the road. It is lined with vertical timber cladding and asbestos cement over dado height. The timber windows have horizontal glazing bars and there are vents in the upper gables, but no wall vents. There is a concrete roughcast water tank adjacent. Nearby is an octagonal sheltershed, complete with coathooks, window shutters and finial. There is a bell on a metal stand, a flagpole, garden planting and a memorial stone to headteacher Ros Tansey, 1.2.83-31.5.89. There is a garden and the school plantation of eucalypts is opposite.

Landscape. A typical small bush school ground, surrounded with a windbreak of coppiced Sugar Gums. The site has been developed with the paths to the front of the building and hard play areas of asphalt and gravel around the perimeter of the building. New plantings of native trees are along the fence lines and specimen trees placed throughout the school ground and the grassy areas of the adventure playground to the west. A large pine tree identifies the entrance gate.

Plant species include:

Eucalyptus cladocalyx

Pinus Radiata

Eucalyptus spathulata

Eucalyptus Lenmanni

Acacia baileyana

Melaleuca armillaris

Sugar Gum

Monterey Pine

Swamp Mallet

Bushy Yate

Cootamundra Wattle

Bracelet Honey Myrtle.

COMPARATIVE ANALYSIS: School: Glenmore No. 3688 (ref: 37) is also Early Modern. Sheltershed: Eddington PS, Tullaroop Shire; Dartmoor PS (assembled from the components of a portable school), Portland Shire, Footscray PS (larger) and Benalla(?).

¹ *Bacchus Marsh Express*, 5 November 1910.

² Moore & Oomes, *Bacchus Marsh. A Pictorial Chronicle*, p.144.

³ L.J. Blake, *Vision and Realisation*, vol. 3, pp.119&120; Gwyn Moore & Jean Oomes, *Bacchus Marsh. A Pictorial Chronicle*, p.144 & NT File No. 2798. File only.

Plantation: The only one in the Shire (although the site of former Parwan PS, (ref: 178A), has pines).⁴

SIGNIFICANCE: Balliang Primary School No. 3630 is an early Modern timber school built in 1945 after a bushfire destroyed a previous building built for the Staughton Vale Estate. An unusual 1910 sheltershed survives.

It is of local historical significance in embodying Balliang and its way of life, the aspirations of its residents and the educational development of its community life. The pine plantation demonstrates evidence of an educational movement in Victoria. The school is socially significant as central to the identity of Balliang, as a traditional meeting place and community focus.

The sheltershed has architectural significance as a rare intact survival of a building type.

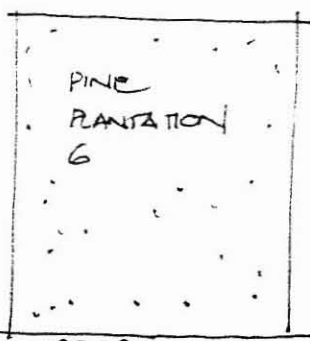
INTACTNESS: Very good. The sheltershed is particularly intact.

CONDITIONS & THREATS: Closure.

⁴ Laurie Wheelahan letter to RP, 20 April 1994 & Land Conservation council. *Melbourne District 1 Review. Final Recommendations*, pp. 46&47.



ANGLICAN CHURCH
5



PINE
PLANTATION
6

HOUSE
4



BACCHUS MARSH - BALLANG ROAD.

SCHOOL
6

