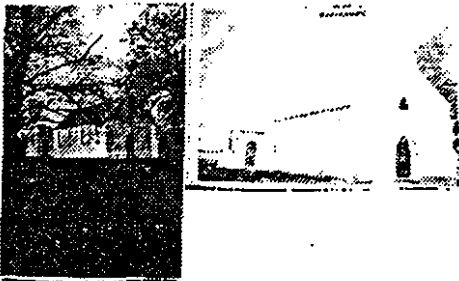


No. 10 Timber Cottage, 415 Eyre Street



This brick cottage was constructed in c. 1857 for Robert Allen, a miner. The cottage has been substantially altered, however the garden layout and evidence of early planting remains. The gate archway is a notable example of a recent contributory form.

No. 11 St. Nicholas, Catholic Church, Fisken Street.



The f. St Nicholas Catholic Church was constructed in 1858 to the design of architects, Shaw and Dowden. The building was constructed for the dual occupancies of a school and church. The interior was originally divided by a panelled screen into separate boys' and girls' schools, each measuring twenty-five feet by twenty feet with individual entrances. The church has been substantially altered with new windows and doors.

No. 12 Former Police Station, Government Reserve.



This simple rectangular brick Court House was constructed in 1859, featuring twelve pane windows flanking a central doorway.

No. 13 Former Court of Mines, Government Reserve.



The first County Court and Court of General Sessions was opened in 1853, and Judge Warrington Rogers was the first to preside over the Court. This sandstone structure was constructed shortly after the commencement of the court.