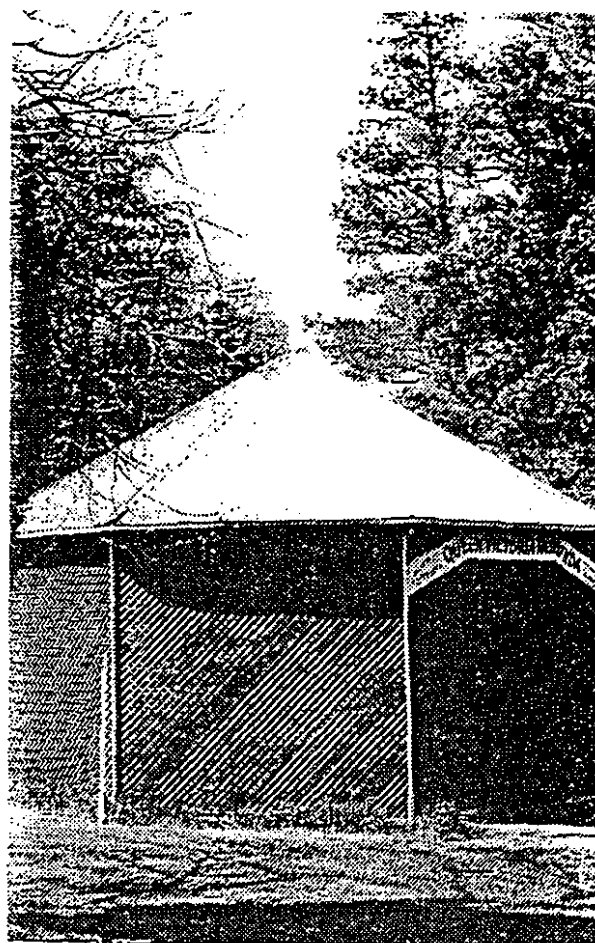


BUILDING NO. 56  
QUEEN VICTORIA ROTUNDA  
BUNNINYONG BOTANIC GARDENS



Recommendations

It is recommended that Queen Victoria Rotunda be added to the Register of the National Estate and protected under the provisions of Clause 8 of the Town and Country Planning Act. (Third Schedule.)

Statement of Significance

The Queen Victoria Rotunda is a particularly fine example of a lattice structure garden building. The Pavilion has been recently restored which serves to increase its significance. From its opening, to celebrate Queen Victoria's Jubilee, the pavilion has been a focus in the Buninyong Botanic Gardens catering for picnic parties and later used as a kiosk selling local market garden produce to the public.

Building History and Description

The Buninyong Gardens were commenced in 1888, and were permanently reserved in 1889, as a Public Gardens. Construction of the Rotunda commenced in 1901, and the structure was opened after an official ceremony and procession through Buninyong to celebrate Queen Victoria's Jubilee.

The Rotunda was constructed to provide shelter for picnic parties, and was later utilized as a kiosk, selling locally grown produce to garden visitors.

The hexagonal plan Rotunda is constructed of timber lattice cladding with a corrugated galvanised iron roof. Two entrances provide access to the structure, and the principal entrance is defined by the sign.

A finial completes the structure. The Rotunda is in good repair and remains substantially intact. It is considered to be a fine example of a lattice Garden Pavilion.

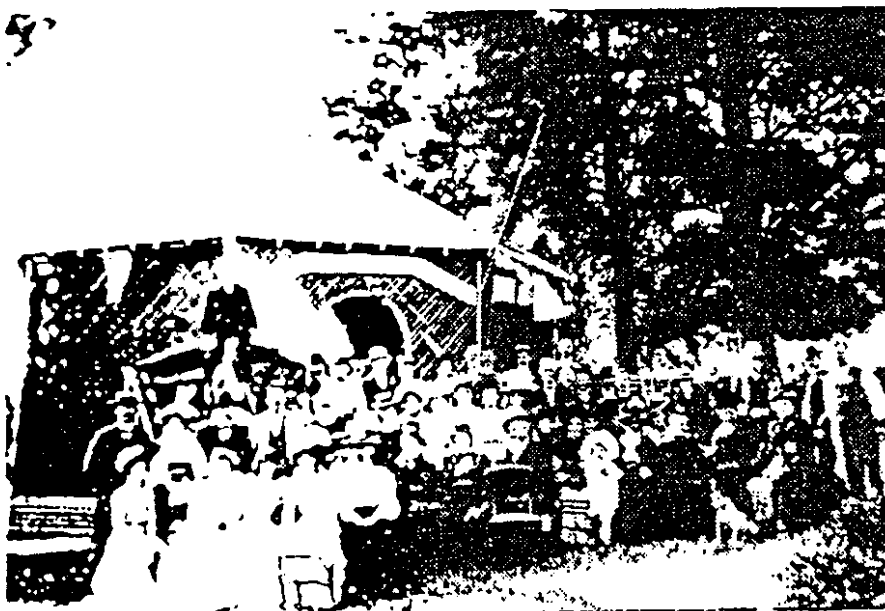
#### Building Integrity and Future Enhancement

The Queen Victoria Rotunda is substantially intact, and the structure remains in a good state of repair.

#### References

P Watts "Historic Gardens Study". Garden State Committee of Victoria. National Trust of Australia. (Victoria). 1980. Vol 2.

P Lumley et al. "Ballarat Historic Landscapes, Trees and Gardens", in draft form. Melbourne 1983.



PH 4 QUEEN VICTORIA ROTUNDA, OPENING CEREMONY 1901.