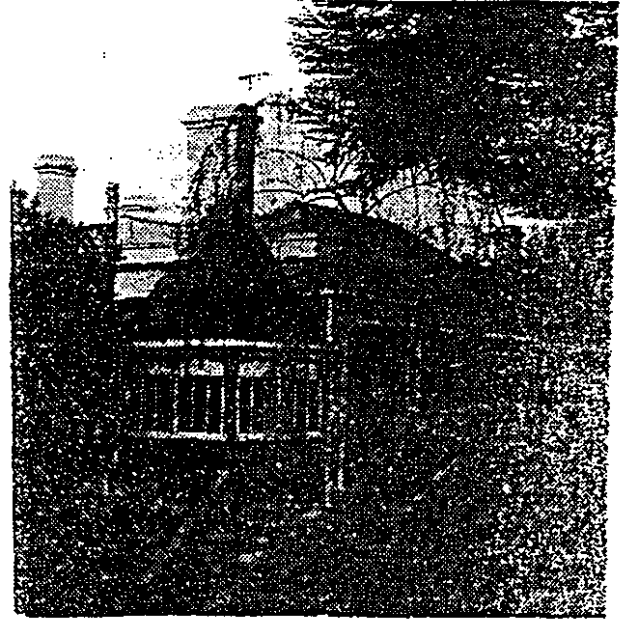
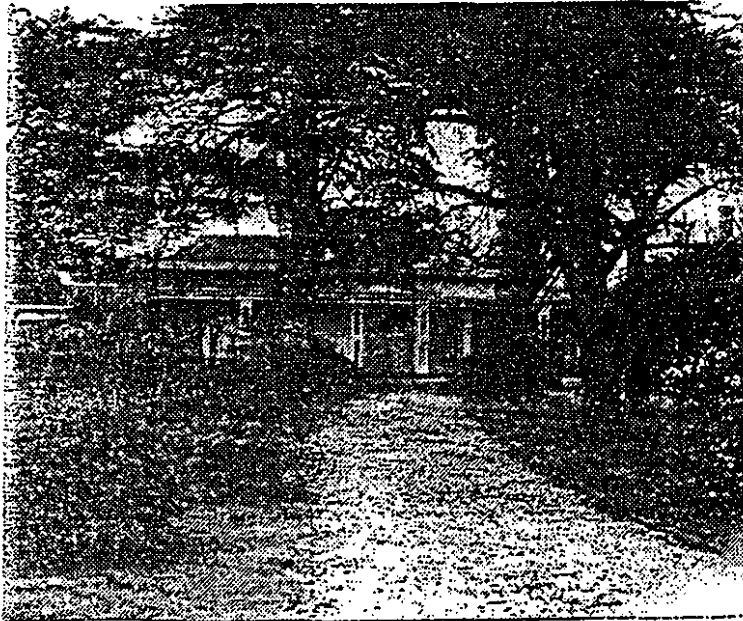


BUILDING NO. 44
'NETHERBY'
606 WARRENHEIP STREET



Recommendations

It is recommended that 'Netherby' be added to the Historic Buildings Register, the Register of the National Estate and protected under the provisions of Clause 8 of the Town and Country Planning Act. (Third Schedule).

Statement of Significance

'Netherby' is a highly significant residence in Buninyong and is prominently sited in one of the principal streets. The building was associated with early medical practitioners in the town and is noted for its Regency detailing. Of particular interest is the parapet facades, timber verandah and the pyramid roofed conservatory. The garden remains substantially intact with remnants of early planting and gravel paving. A fence and timber gates enclose the dwelling, and a notable landscape feature is the mature Bunya Bunya Pine tree.

Any internal alterations should be preceded by a detailed conservation analysis.

References

Background information to Historic Buildings Council.

National Trust of Australia. (Victoria), file No. 1580 - Old Library,
Buninyong.

Information from local historian, Mrs Beth Ritchie.