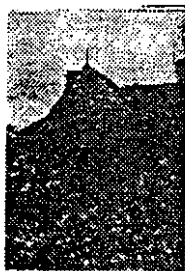


No. 49 f. Eagle Hotel, 507 Warrenheip Street.



The Eagle Hotel is recorded in an 1862 directory for Buninyong, and most probably was constructed shortly before this date. A surviving early photograph well records the early hotel. It was constructed in stuccoed brick, with elaborate facade detailing. A facade incorporates a system of applied trabeation of piers and columns with arched windows. The original central entrance was recessed, and flanking windows to either side have decorative sills. A simple parapet completes the building. The hotel building was originally without a verandah and later additions included a first floor balcony, and presently a timber post supported verandah.

No. 50 Brick Cottage and Stables, 701 Warrenheip Street.



This Gothic Style brick residence was constructed in the 1850's and was associated with Dr Rankin, and Dr Corvett in 1873. It features decorative barge boards, high pitched slate roof and bay window with battlemented decoration.

No. 54 Timber Cottage and Stone Barn, 1108 Winter Street.



This delightful complex of buildings comprising a timber cottage with a corrugated iron roof, and a stone barn, was thought to be constructed for Samuel Coxall, a market gardener, in the 1860s. Although in a deteriorated condition the buildings remain intact and feature render chimney detailing, post-supported verandah with cast iron frieze flat arched lintels in the barn. A stone fence and hedging completes the attractive setting.