

BUILDING TITLE BALLARAT CITY FIRE STATION
LOCAL GOVERNMENT AREA CITY OF BALLAARAT

NATIONAL ESTATE PROJECT No.
DOCUMENTATION OF LISTED HISTORIC BUILDINGS IN VICTORIA

DESIGNATION H.B.P.C. REGISTER No. NATIONAL TRUST (X) (R) FILE No.

BUILDING TYPE FIRE STATION
BUILDING NAME BALLARAT CITY FIRE STATION
STATE VICTORIA
LOCAL GOVT AREA CITY OF BALLAARAT
STREET STURT STREET No. 702
SUBURB/TOWN BALLARAT
CITY BALLAARAT POSTCODE 3350
RURAL
NEAREST CENTRE Km.

TITLE REFERENCE Vol Fol
DIRECTORY
NEGATIVE FILE FILM 3 / FRAME 22

PHOTOGRAPHIC ILLUSTRATION
DATE OF SURVEY/INSPECTION JULY 1978



OWNERSHIP ORIGINAL BALLARAT CITY FIRE BRIGADE
PRESENT COUNTRY FIRE AUTHORITY
ADDRESS MILTON PARADE, MALVERN 3144

ARCHITECT/PRACTICE H.R. CASELLI
BUILDER EVANS AND BARKER
ARTISANS/TRADES

TENDERS 17 MAY 1860 REFERENCE "STAR" 17 MAY 1860
DATE OF CONSTRUCTION 1860
ESTIMATE/CONTRACT VALUE
ALTERATIONS/ADDITIONS BLUESTONE ROUGHCAST, TIMBER WATCH HOUSE AT
5th LEVEL OF TOWER REMOVED.

BUILDING CITATION

The Ballarat City Fire Brigade was formed in 1859. In 1860 H.R.Caselli prepared plans and called tenders for the Western Fire Brigade House, Sturt Street, and the foundation stone was laid on 15 June 1860. The Station comprises a two store building housing an engine house with a mess room. This is finished with a castellated top. A five storey octagonal tower projects as a bay from the central facade. Whilst the entire building is constructed of bluestone, it has been surfaced with rough cast at a later date. The tower is of particular importance - it has thin windows on each face at each floor level. Although the glazed corbelled lookout at the fourth storey has been removed, the open work covered lookout at the fifth storey remains. This also houses the massive fire bell. The building is virtually intact other than the rough cast finish, the removal of the corbelled lookout and the insertion of windows into the engine room doors. An addition to the rear of the two storey section has maintained the same form as the earlier section. This building would appear to be the most intact early Fire Station in the State, and is comparable only with the East Ballarat Station, which has a stepped brick tower.

RECOMMENDATIONS

It is recommended that this building be added to the Historic Buildings Register, be retained on the Register of the National Estate, and be specified under Clause of the Town and Country Planning Act (Third Schedule).

DOCUMENTATION SOURCES

- 01 GOVERNMENT RECORDS
- 02 LOCAL GOVERNMENT RECORDS
- 03 ARCHIVES/CATALOGUES
- 04 ARCHITECTS INDEX
- 05 ARCHITECTURAL DRAWINGS/ILLUSTRATIONS
- 06 PHOTOGRAPHIC RECORDS
- 07 NATIONAL TRUST FILE/ HISTORIC BUILDINGS PRESERVATION COUNCIL FILE
- 08 PRIVATE RECORDS
- 05 SUTHERLAND, VICTORIA AND ITS METROPOLIS V.2 P.181.
- 06 STATE LIBRARY OF VICTORIA MC4 DRI ENV 2B H2049 c1861
BALLARAT ILLUSTRATED P.33.
BALLARAT & VICINITY 1901 P31

BIBLIOGRAPHY

- 1. WITHERS, HISTORY OF BALLARAT P.298.
- 2. "BALLARAT STAR" 4 MARCH 1885 (CASELLI'S OBITUARY)
- 3. SPIELVOGEL PAPERS, BALLARAT LIBRARY, P.43.
- 4. "BALLARAT STAR" 17 MAY 1860. (TENDER NOTICE)
- 5. VICTORIA AND ITS METROPOLIS V.2. P.181.

ASSESSMENT OF LISTING

CONDITION/INTEGRITY OF BUILDING BWESTONE ROUGHCAST SUBSTANTIALLY INTACT
SIGNIFICANCE OF BUILDING
LANDSCAPE/STREETSCAPE/ENVIRONMENTAL SIGNIFICANCE PART OF RECOMMENDED
AREA A3.15

DOCUMENTATION JACOBS LEWIS VINES DATE SEPTEMBER 1978
ARCHITECTS.

BALLARAT CITY FIRE STATION, 704 STURT STREET

BUILDING ANALYSIS AND DESCRIPTION

The Ballarat City Fire Brigade was formed in 1859.¹ In 1860 H.R.Caselli prepared plans and called tenders for the Western Fire Brigade House, Sturt Street,² and the foundation stone was laid on 15 June 1860.³

The Station comprises a two storey building of bluestone with a castellated top with a central five storey tower. The two storey building comprised the engine house at ground floor level and a mess room above. The whole structure has been covered with rough cast; the quoin dressings and architraves have been finished in smooth cement.

The Station has maintained the original openings, although the diagonally braced engine house doors have had windows inserted. An extension at the rear has continued the basic form down Raglan Street. The tower is of particular importance; it is an octagonal section with thin windows in each face at each floor level. The corbelled glazed gallery at the fourth storey has been removed, but above this the open work covered lookout remains. This has timber posts, strut corner brackets with pointed trefoil infill, and a bracketted cornice following around the octagon. A lower pitched octagonal roof above this supports the prominent flagpole.

The tower is also of interest internally, the stairs up to the first floor follow around the octagon, and the balustrade is in straight sections simply bending at each corner. Then there is a narrower stair, and in the upper levels the stone is left rough faced inside and there are crude stone corbels carrying the timbering. There seems to be traces of the original brown paint.

-
1. Withers, p.298.
 2. *Ballarat Star* 17 May 1860.
 3. Spielvogel papers.

BALLARAT CITY FIRE STATION, 704 STURT STREET (contd.)

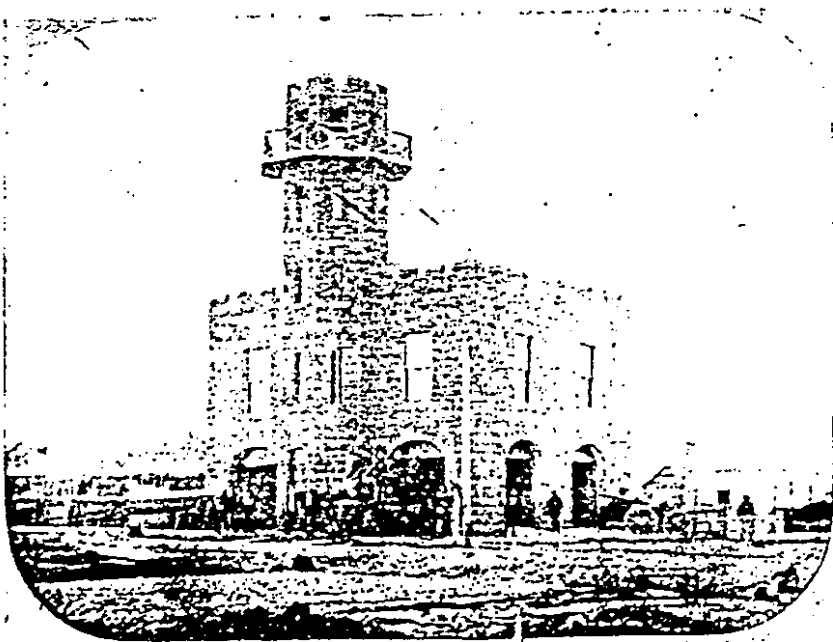
BUILDING ANALYSIS AND DESCRIPTION

On the lookout deck, reached by a trap door, the massive original fire bell is still in place. This was cast in steel in 1860 by Naylor Vickers and Co. of Sheffield, on E.Riepe's patent No.2013.

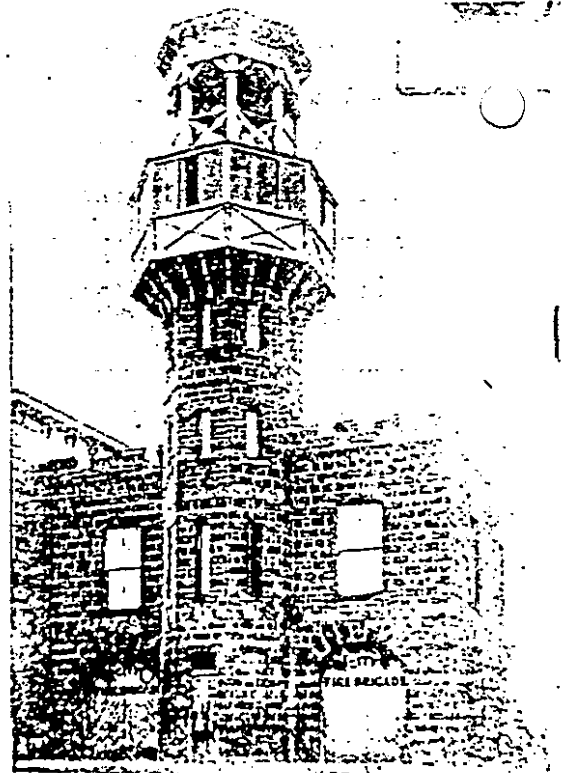
It is unlikely that Victoria possesses another fire station of this period as intact as this building. (The only comparison can be made with the East Ballarat Station which has a later engine room of a different style, and the tower is of brick and is stepped in with successive storeys. The different form and construction materials makes comparison difficult.)

The building is of considerable importance historically as it represents one of the earliest and most intact surviving substantial buildings in Ballarat.

This building is externally intact, other than rough cast render, the removal of the glazed corbelled lookout, the changes to the doors and the addition at the rear.



C.1861 SLV



C.1901 BALLARAT AND VICINITY