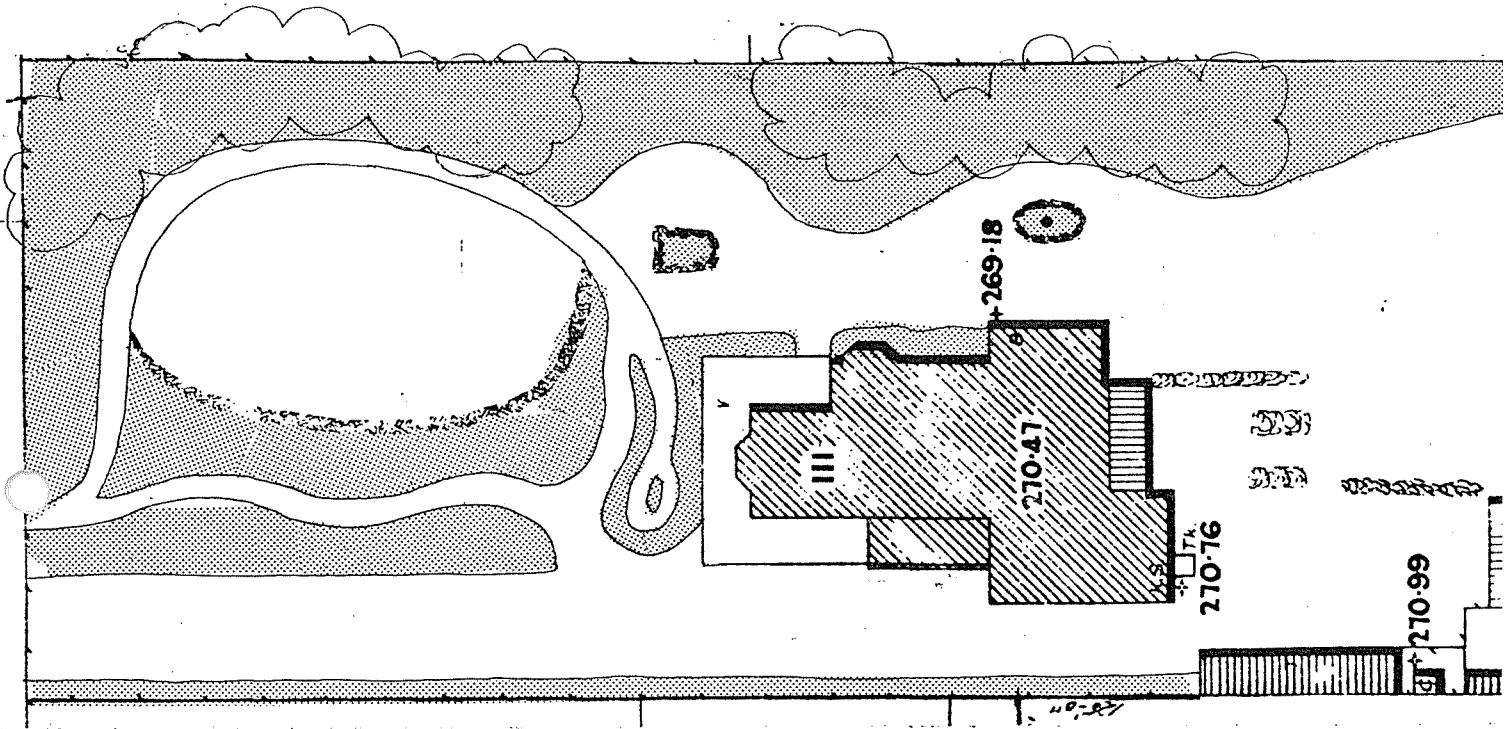


RESIDENCE AND GARDEN

111 Webster Street, Ballarat
erected 1873

Sewerage detail plan No.63
(revised January 1928) super-
imposed with garden layout.



RECOMMENDATIONS

It is recommended that this residence and garden be added to the Register of the National Estate and be specified under the provisions of Clause 8 of the *Town and Country Planning Act* (Third Schedule). Further, the garden and external elevations of the house should be added to the Historic Buildings Register or any future legislation which allows gardens to receive statutory protection.

BUILDING HISTORY AND ANALYSIS

This garden is presumed to date from 1873, when the house was constructed. Although the house is of typical Victorian design, the garden gives 111 Webster Street especial interest.

The garden is of particularly fine design, although there is no record of any professional designer being associated with its execution. The front has a winding path from the front gate bordered with clipped box hedging and a beautiful, slightly sunken oval lawn. This is overlooked by several very fine and dominant examples of *Sequoia*. A number of arbours and fussy path arrangements edged in rock or box hedging give a true gardenesque atmosphere.

The garden is remarkably intact. A row of *Pinus Radiata* has recently been removed from along the driveway while the garden is still very well maintained. It is possibly the finest and most intact surviving Victorian suburban garden in the state. It is enhanced by its relationship with the intact 1873 villa and the setting in Webster Street, with its significant adjoining houses and mature street planting.¹

1. This citation is based on work done by Peter Watts, contained in the "National Trust of Australia (Victoria) Historic Gardens Study", 1980.