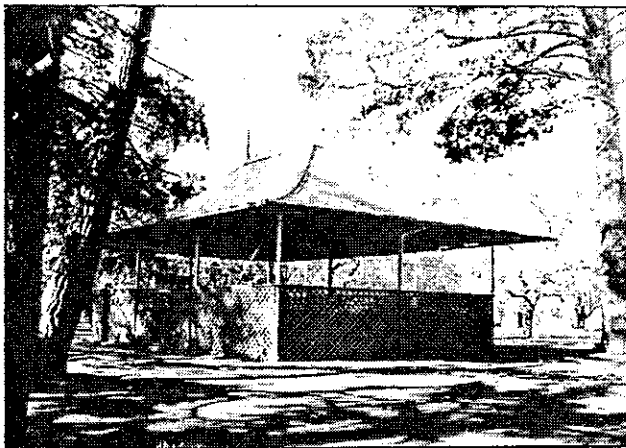


## PAVILION

Ballarat Botanic Gardens

erected 1904

architect: City of Ballaarat



### RECOMMENDATIONS

It is recommended that this pavilion be added to the Register of the National Estate and be specified using the provisions of Clause 8 of the *Town and Country Planning Act 1961* (Third Schedule).

### BUILDING HISTORY AND ANALYSIS

This pavilion was erected by the Ballaarat City Council in 1904, to cater for the growing number of picnic parties using the Botanic Gardens for outings. In 1901, Mr John Lingham, curator of the northern section of the Botanic Gardens, reported that 8500 children had attended organised annual picnics, and two years later a railway excursion picnic was attended by record numbers, clearly indicating the need for such a pavilion.<sup>1</sup>

A redundant shelter house had been removed in 1903 and the new pavilion was constructed in metal instead of timber. Ten cylindrical columns hold the graceful pavilion roof of concave corrugated iron, and two large finials complete the roof design. The sides of the structure are clad in lattice to half the height of the walls, and openings in the two long sides are able to be locked with mesh gates.<sup>2</sup>

This pavilion is typical of many structures built to cater for large organised picnics. At least three similar pavilions exist elsewhere in Victoria; Lake Weeroona (Bendigo), White Hills Botanic Gardens (Bendigo) and Maddingly Park (Bacchus Marsh). The two Bendigo examples are both of similar design (probably by Bendigo City Council) and the Bacchus Marsh structure, whilst less intact than the others, is of an unusual picturesque Gothic revival design with a cruciform roof plan and quite intricate barge boards.

All four buildings are of special interest and the Ballarat pavilion is an elegant example of this once-common form of municipal garden building. The roof form contributes greatly to this elegance and the present deteriorated condition of the structure is a matter for concern.

---

1. *Mayor's Report*, Ballarat, 1901, p.11 and 1903, p.15.

2. Two sheets of drawings held by City of Ballaarat, contract M/1904.