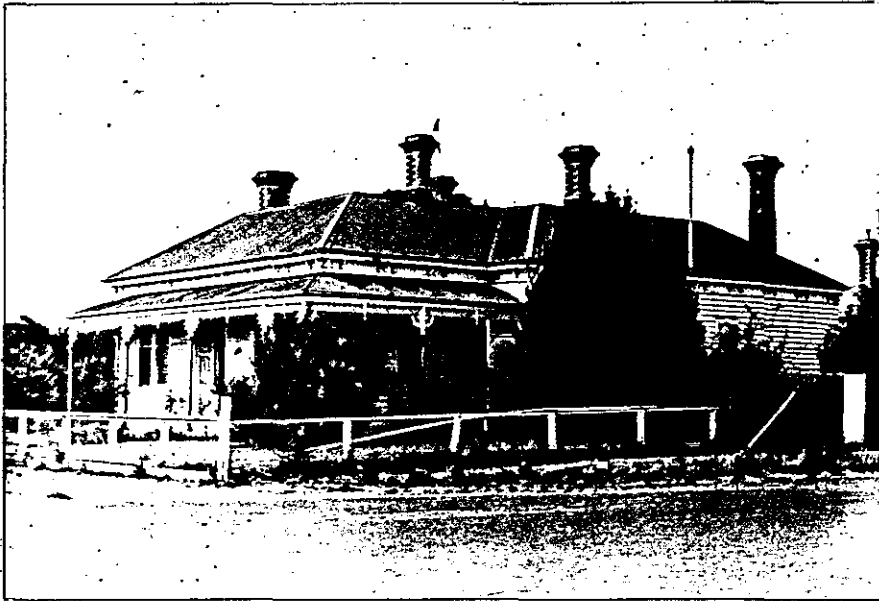


HOUSE

190 Victoria Street (cnr. Rodier Street)



RECOMMENDATIONS

It is recommended that this house be specified under the provisions of Clause 8 of the *Town and Country Planning Act (Third Schedule)*.

BUILDING DESCRIPTION

This timber residence located at the entrance to Ballarat in Victoria Street provides an intact example of a double fronted Victorian residence. It is characteristic of Ballarat with its recessed panelled front door. The intact cast iron, polychrome chimneys, eaves bracketing and prominent corner location make it a building of local importance worthy of protection.