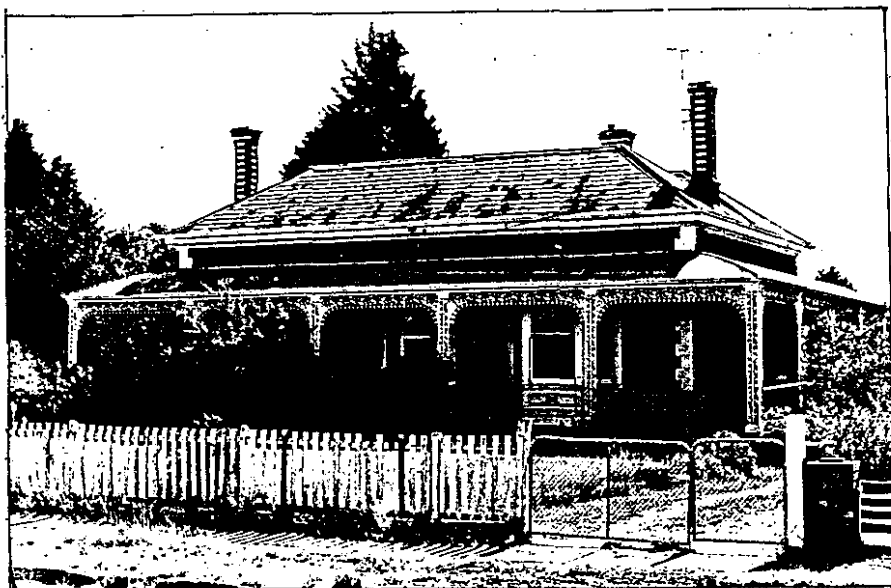


NORTH VIEW VILLA

108 Burnbank Street, Ballarat

erected c.1883



CURRENT ASSESSMENTS

Register of the National Estate

Classified: National Trust of Australia (Victoria)

RECOMMENDATIONS

It is recommended that North View Villa be specified under the provisions of Clause 8 of the *Town and Country Planning Act* (Third Schedule), as well as its retention on the Register of the National Estate.

BUILDING HISTORY AND ANALYSIS

North View Villa is a substantial and intact example of a brick residence with the local style of decorative cast iron frieze and open work columns. The villa actually faces west and was constructed for Joseph Stout, a successful Ballarat gold miner and company director, and has been occupied by his family to the present day.

The building is essentially of simple double hipped roof red brick construction relieved by cream brick details on chimneys and at the corners, a timber projecting bay window and the decorative cast iron on the verandah.¹ The cast iron was manufactured by Bromley Iron Foundry, Ballarat.

1. File - National Trust of Australia (Victoria.)