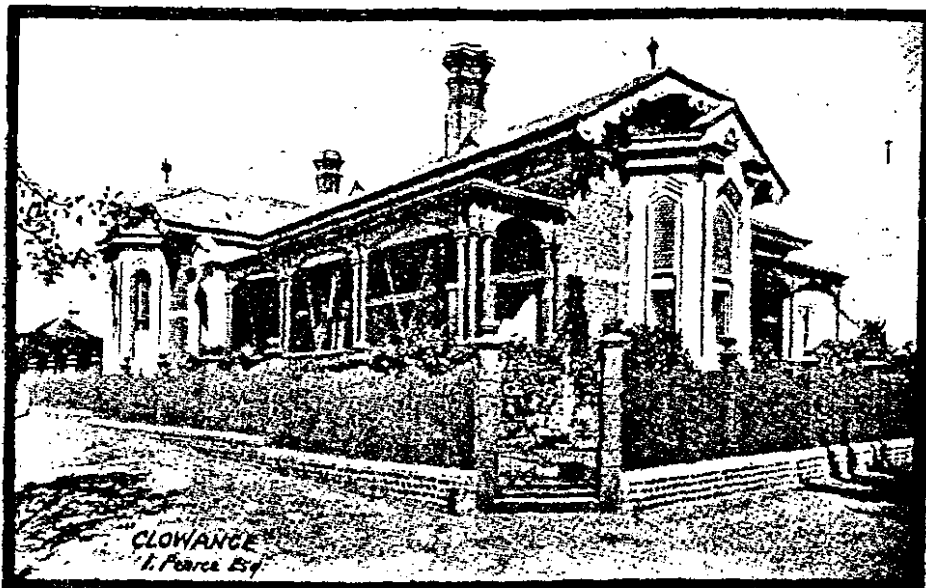
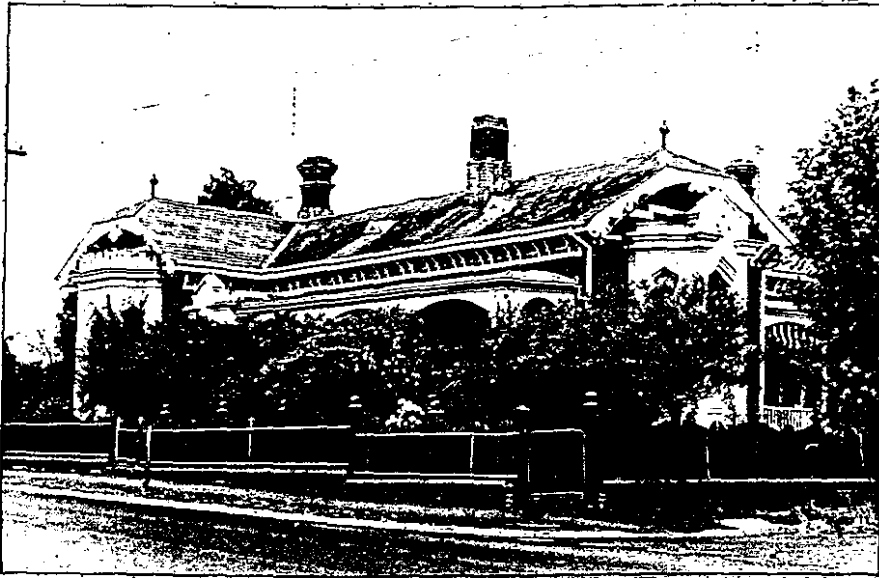


CLOWANCE

518 Barkly Street, Golden Point



'Clowance', c.1919

RECOMMENDATIONS

It recommended that 'Clowance' be added to the Historic Buildings Register, the Register of the National Estate, as well as being specified under the provisions of Clause 8 of the *Town and Country Planning Act* (Third Schedule).

BUILDING HISTORY AND ANALYSIS

In 1861 Mr. Isaiah Pearce migrated to Australia from Cornwell, England. Joining his brother James, the pair managed various mines in the district as well as setting up a quartz crushing business. Erected in 1874, the plant was located on Sinclair's Hill to cater for the deeper quartz mining common in Ballarat by that date. Pearce Bros. used a battery of 24 heads which enabled 20,000 tons of rock to be crushed per annum. As well as the crushing business, the pair also managed the wealthy North Woah Hawp Mine.¹

'Clowance', Isaiah Pearce's residence was probably built c.1880-90.² By 1887, Withers could comment that ". . . it was pretty well-known that [the Pearce Bros.] have done fairly well."³ This wealth is certainly reflected in 'Clowance'." The house is substantial, with projecting bay windows and verandahs on the north and east. Brown brick, relieved by bands of contrasting colour combine with intricate brick chimneys to counterpoint the cement render decoration on the bay windows. The northern bay has a crenellated parapet while the eastern one continues the string course, which is then unexpectedly broken by a projecting triangular arch, mirroring the head of the window below.

The timber detailing on the verandah and barge boards is most unusual. Pairs of verandah columns are joined by a simple timber segmental arch, while the barge boards are intricate, using finely cut motifs. The fence is an important adjunct to the house. It has large timber posts with turned tops and thin pickets of varying height, arranged with an undulating top, now a rare example of a once-common fence design.

-
1. Sutherland, *Victoria and its Metropolis*, 1888, Vol.2, p.191.
 2. *Ballarat Illustrated*, c.1919, p.31. Illustration of 'Clowance' I.Pearce Esq. Shows house and fence clearly, garden is established.
 3. Withers, *History of Ballarat*, 2nd ed., 1887, p.349.
-