

### External Integrity

The house is generally externally original; the picket fence and trim colours have some sympathy to the house's period.

### Streetscape

Contributes to a notable and stylistically homogeneous residential streetscape.

### Significance

Architecturally, although basically of a conservative design, its multi-gabled bays are distinctive and relate directly to nearby like examples and the streetscape; in general of regional importance.

Historically, little is known of the major owners in the Camberwell context.

### House, 29 Kintore Street



### Study Grading: A

Precinct: 26.01 Streetscape: 2

Construction Date: 1900

First Owner: Coburn, Priscilla

### History

Mary Edith Stirling was the major early owner of this house from c1901 but before her, Priscilla Coburn, owned and occupied it immediately after its construction in c1900<sup>1</sup>. The valuation had nearly doubled by c1921 when the new owner/occupier was James H Reynolds, a manufacturer<sup>2</sup>, indicating that the sale price could have brought a revaluation or that improvements were made. Throughout, the house was described as of brick and 9 rooms sited on allotments 32-4<sup>3</sup>.

By the late 1920s a Queenslander, Richard W Neville who was then the general manager of Treadway & Co., was resident there and remained so into the 1950s<sup>4</sup>. He had become chairman and managing director of the company by 1950 as well as serving as chairman of a number of charitable committees and trade related societies such as the YMCA national committee, the Master Drapers & Traders Assoc., the Australian Club of Retailers, and the executive committee of the Methodist Ladies College et. al.<sup>5</sup>

### Description

This is a large two-storey gabled-roof house, with its original picket fence, and stucco wall finish set in spacious grounds with mature planting. The house has half-timbered gables set against a hipped roof, also bayed wings and multiple pierced chimney stacks. A mature cypress hedge backs up the original and notable fence. Also, a Monkey Puzzle tree is one of the numerous exotic trees in the garden.

Given the ownership change in the 1920s, it is possible that what may have been red brick external walls have been stuccoed over, along with other elements like the chimneys. The house remains uncharacteristically bland for a large house of 1900.

### Comparative Examples

Unlike other houses of the era, it is stuccoed and two-storey, rather than with an attic storey.

The following Camberwell sites may be compared with this site.

- 69, BROADWAY, 1900-1
- 20, BRYSON STREET, 1900
- 608, RIVERSDALE ROAD, 1900
- 1, SALISBURY STREET, 1900
- 5, VICTORIA ROAD, 1900
- 11, LUENA ROAD, 1900c
- 42, BRYSON STREET, 1901
- 58, CANTERBURY ROAD, 1901
- 6, KINTORE STREET, 1901
- 23, ROYAL CRESCENT, 1901
- 35, BROADWAY, 1902
- 39, PROSPECT HILL ROAD, 1902
- 169, CANTERBURY ROAD, 1903-4
- 6, LOCAN STREET, 1903
- 142, MONT ALBERT ROAD, 1904
- 7, MANCARRA ROAD, 1905-6
- 24, CHAUCER CRESCENT, 1905
- 633, RIVERSDALE ROAD, 1906-8
- 27, BALWYN ROAD, 1906
- 58, BROADWAY, 1906
- 65, MONT ALBERT ROAD, 1906
- 73-75, BROADWAY, 1907
- 31, CHAUCER CRESCENT, 1907
- 17, THREADNEEDLE STREET, 1907
- 18, PEPPIN STREET, 1907c
- 138, CANTERBURY ROAD, 1908-9
- 41, INGLESBY ROAD, 1908-9
- 10, SEFTON PLACE, 1908

1 RB1900-1901,985; RB1903-4,1088  
 2 RB 1921-2, 2376  
 3 ibid.  
 4 WWA 1950, D-1920-50  
 5 ibid.

41, INGLESBY ROAD, 1909-10  
 71, BROADWAY, 1909  
 73, BROADWAY, 1909  
 31, CANTERBURY ROAD, 1909  
 206, CANTERBURY ROAD, 1909  
 22, VICTORIA ROAD, 1909  
 1293, TOORAK ROAD, 1910-  
 8, ST. GEORGES CRESCENT, 1910  
 2, CLAYTON STREET, 1910c  
 199, WHITEHORSE ROAD, 1910c  
 24, ALBION STREET, 1911  
 17-19, BROADWAY, 1911  
 96-98, UNION ROAD, 1911  
 24, KENT ROAD, 1912-13  
 54, BROADWAY, 1912  
 35, MATLOCK STREET, 1912  
 648, BURKE ROAD, 1913-18  
 6, KITCHENER STREET, 1913  
 8, FITZGERALD STREET, 1915-20c  
 127, WINMALEE ROAD, 1915-20c  
 27A, ALMA ROAD, 1915  
 76, ATHELSTAN ROAD, 1915  
 353, WHITEHORSE ROAD, 1915c  
 150, WINMALEE ROAD, 1915c

### External Integrity

Generally original.<sup>1</sup>

### Streetscape

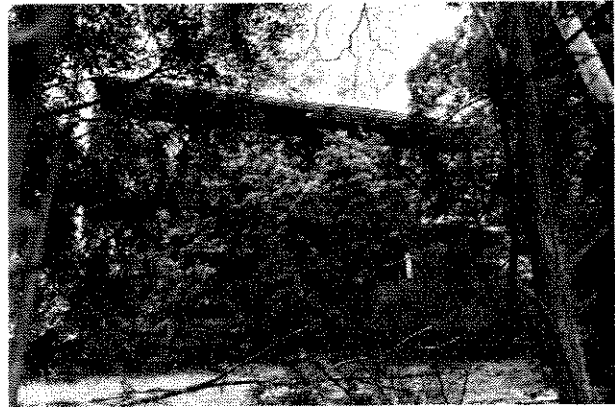
A major contributor to an important late 19th and 20th century precinct. Although unlike many of the surrounding houses in style and scale, it occupies a key corner position and is dominant in scale.

### Significance

Historically, important for its association with Richard W. Nevile. Nevile was one of a distinctive echelon in Camberwell society, often prominent in commerce and manufacturing and interested in welfare and education. Like Nevile, many others in this group were connected to the Methodist Church. It was the home of a nationally prominent figure (Nevile) and hence evocative of the classes associated with Camberwell: of national interest and State importance.

Architecturally, an unusual variant on the prevailing house styles, complete with extensive and notable fence and hedging of the period, also a major contributor to an important residential precinct: of metropolitan interest and local importance.

## House, 43 Kireep Road, Balwyn



### Study Grading: A

Construction Date: 1952

First Owner: Gillison, D & J

Architect: Boyd, Robin

### History

Douglas Napier & Joan Mary Gillison commissioned the building of a nine roomed, 'weatherboard' house on this site in 1952<sup>2</sup>. The Gillisons lived here until after 1962, probably until the time of Douglas Gillison's death in 1965<sup>3</sup>. By 1974 J.T. Brock resided here<sup>4</sup>. The architect was Robin Boyd<sup>5</sup>.

Douglas Gillison was born in England and educated in Brisbane and Melbourne. His father was the Presbyterian minister, Padre Gillison, who was killed while trying to bring in a wounded soldier at Gallipoli. From 1937 until 1941 Mr. Gillison was a sub-editor with *The Age*. He was also a General President of the Australian

Journalists' Association for a time. During the Second World War he served in the RAAF and was public relations officer in the Pacific and in London. He wrote the first of the air series in the Australian Official War History, *RAAF 1939-42*. In 1946 he became the Press Secretary to the Minister for Air. Later he became Public Relations Officer for the Department of Civil Aviation and in 1959 he was appointed Director of the Australian News and Information Bureau in London, a position he retired from in 1964. He died at the age of 66 on November 1st, 1965<sup>6</sup>.

Joan Gillison was a biographer and historian who began writing after the death of her husband. She first published the story of her grandfather's family. Later she published the history of

1 Inspection required  
 2 RB 1952, 26954  
 3 D1952; D1954; D1962; *The Age*, 2.11.65, p.5  
 4 D1974  
 5 *Cross-section* July 1953  
 6 *The Age*, 2.11.65, p.5; *Herald*, 3.10.64