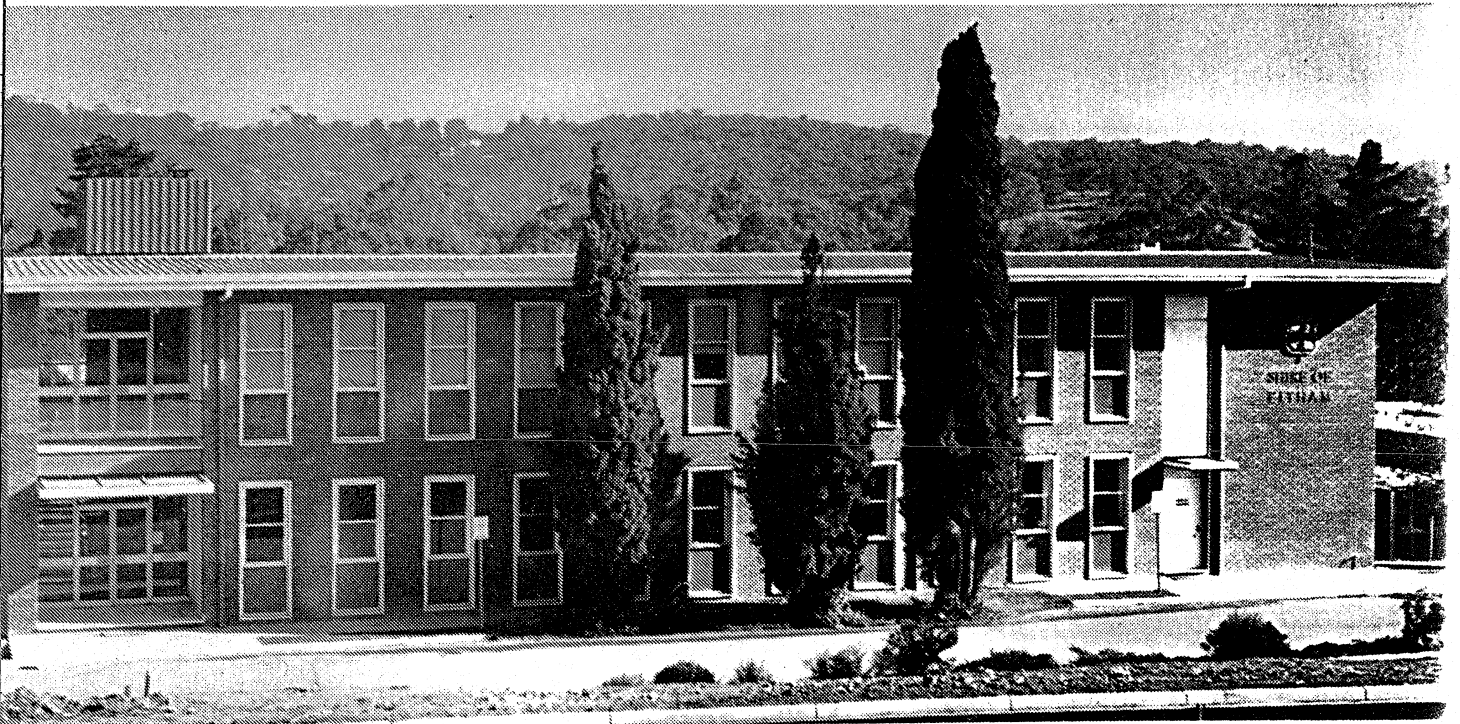


GROUP OF THREE PENCIL PINES  
- *Cupressus sempervirens*,  
COUNCIL OFFICES,  
MAIN ROAD,  
ELTHAM.

SEE ALSO PAGE 1294 FOR THE EVALUATION OF SHILLINGLAW COTTAGE

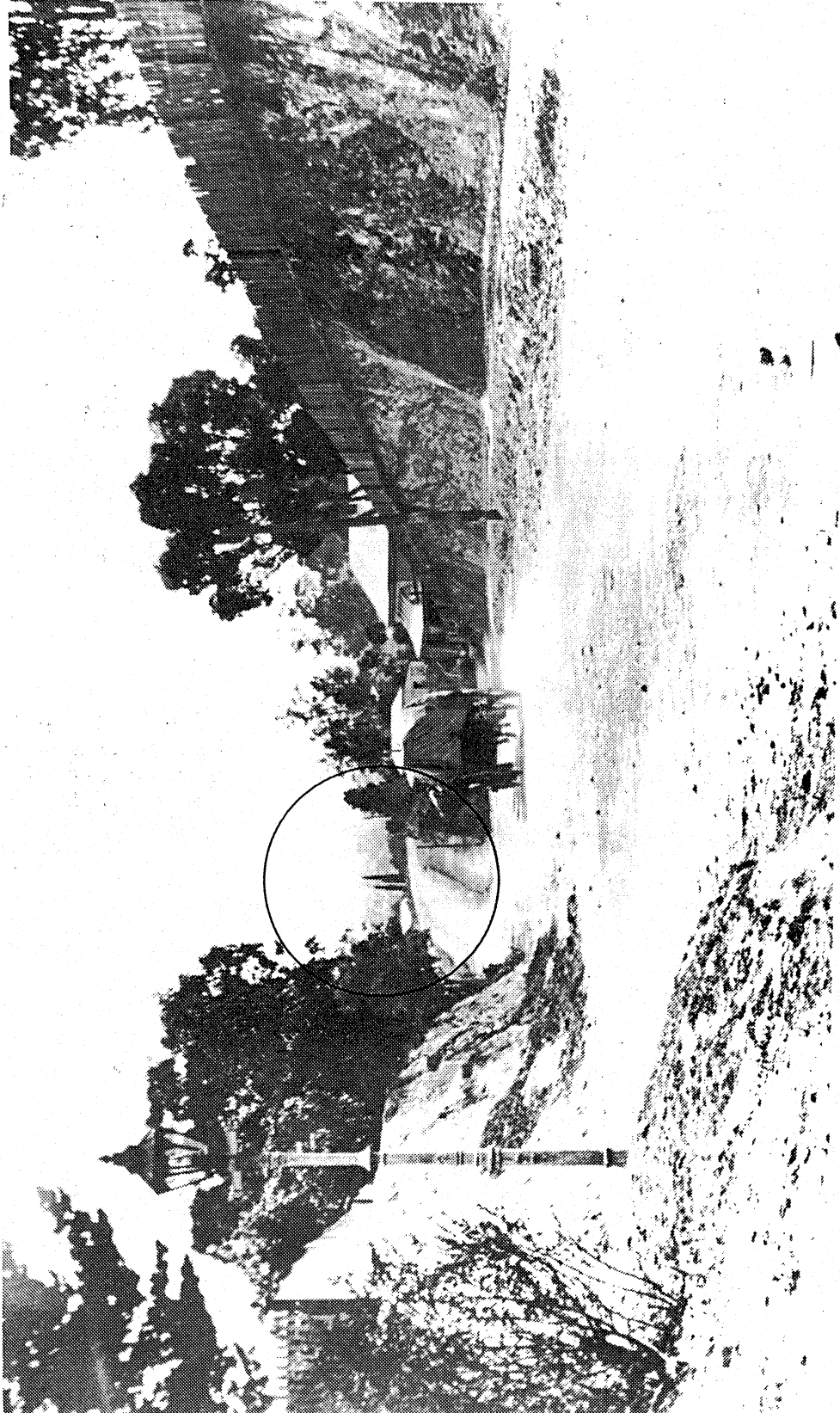
PLANTED:	CIRCA 1920
THEMES ILLUSTRATED BY THIS PLACE:	PRIVATE PLANTING
BASIS OF SIGNIFICANCE:	HISTORY RARITY ILLUSTRATION OF THE THEME STREETScape
DEGREE OF SIGNIFICANCE:	LOCAL SIGNIFICANCE
EXTENT OF SIGNIFICANCE:	3 TREES AND SITE TO A RADIUS OF 10 METRES
RECOMMENDATIONS:	LOCAL PLANNING PROTECTION



THESE THREE PENCIL PINES IMMEDIATELY IN  
FRONT OF THE FIRST STAGE OF THE SHIRE OF ELTHAM  
MUNICIPAL OFFICES (IN THE 1968) (ELHPC NO. 657)

Group of Three Pencil Pines, Main Road Cont.

*OLD PHOTOGRAPH OF MAIN ROAD SHOWING THE PROMINENCE OF THESE TREES (IN THE CENTRE DISTANCE), PROBABLY EARLY THIS CENTURY (ELHPC NO. 708)*



Group of Three Pencil Pines, Main Road Cont.

CULTURAL SIGNIFICANCE:

These trees are the sole remains of the garden of historic Shillinglaw Cottage which was on this site previously. Although they do not date from the time of construction of the cottage they are still significant as indicators of this earlier site use where the Council offices now stand.

DESCRIPTION:

These trees are of upright columnar form and planted close together, adjacent to and in front of the Eltham Shire Offices.

SOURCES:

1. Old photographs in ELHPC, nos. 657 and 708 - copies attached.

CONSERVATION GUIDELINES:

Protect from any future site development. The trees appear to have had an excess of soil built up around their trunks and over the root zone. This should be removed as much as practicable and if necessary, further root zone aeration should be introduced.

Group of Three Pencil Pines, Main Road Cont.

