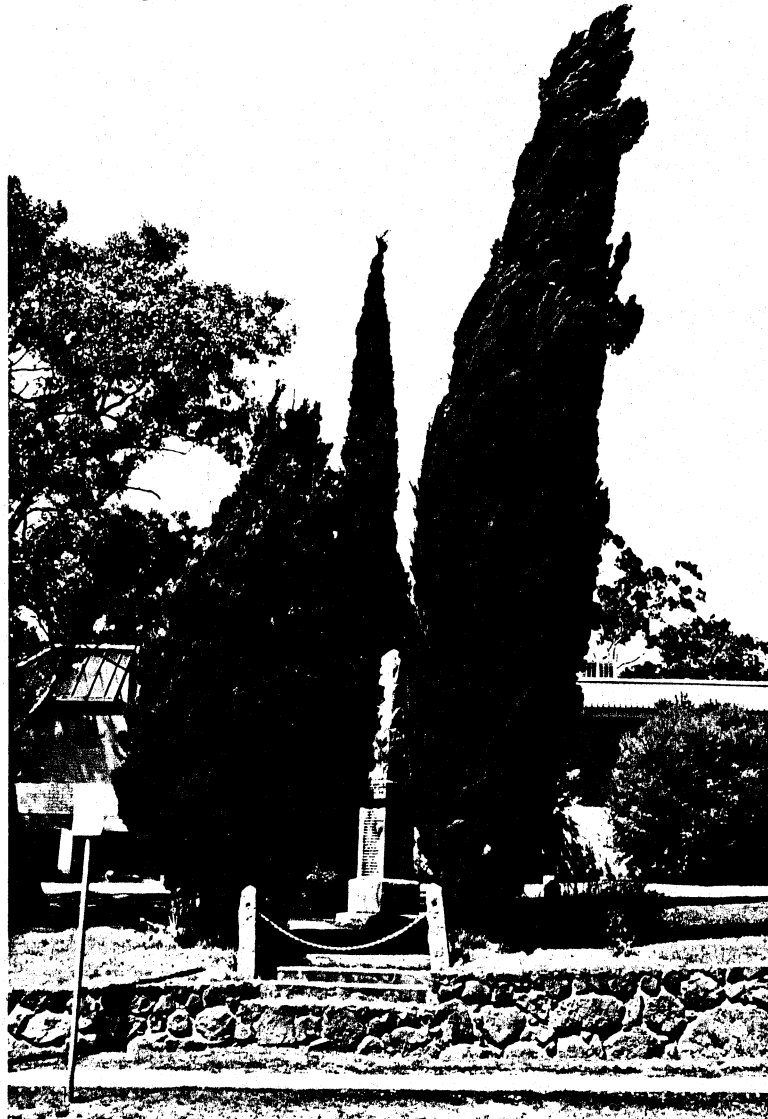


ELTHAM FIRST AND SECOND
WORLD WAR MEMORIAL,
IN FRONT OF ELTHAM R.S.L. BUILDING,
804 MAIN ROAD,
ELTHAM.

BUILT:	POST 1918
	1960S? MOVED TO PRESENT SITE FROM THE CORNER OF MAIN ROAD AND BRIDGE STREET
THEMES ILLUSTRATED BY THIS PLACE:	TOWNSHIP DEVELOPMENT
BASIS OF SIGNIFICANCE:	SOCIAL HISTORY STREETScape
DEGREE OF SIGNIFICANCE:	LOCAL SIGNIFICANCE
EXTENT OF SIGNIFICANCE:	ENTIRE MONUMENT, BOLLARDS, MATURE EXOTIC SITE PLANTING AND SITE TO A RADIUS OF 15 METRES
RECOMMENDATIONS:	LOCAL PLANNING PROTECTION CONSERVATION AREA - ELTHAM GATEWAY



Eltham First and Second World War Memorial, 804 Main Road
Cont.



**1991 PHOTOGRAPH SHOWING THE PREVIOUS/ORIGINAL
LANDSCAPING WHICH HAS SINCE BEEN REPLACED**

Eltham First and Second World War Memorial, 804 Main Road
Cont.

CULTURAL SIGNIFICANCE:

This granite memorial to Eltham's First and Second World War dead, has historic importance and is an important element in the streetscape, which also contains the former C.B.A. Bank and the Uniting (former Methodist) Church. The War Memorial was first erected on the corner of Main Road and Bridge Street and had a very different setting, reflecting the country village nature of Eltham then.

HISTORY:

Original and Continuing Use: War memorial

Original Owner: ?

Present Owner: Eltham R.S.L.

Photographs in the ELHPC show this memorial on its original site - see attached reproduction. It was erected as a First World War memorial and the names of those who died in the Second World War were added to it subsequently.

DESCRIPTION:

Harcourt granite obelisk and paved surrounds, pencil pine tree planting.

SOURCES:

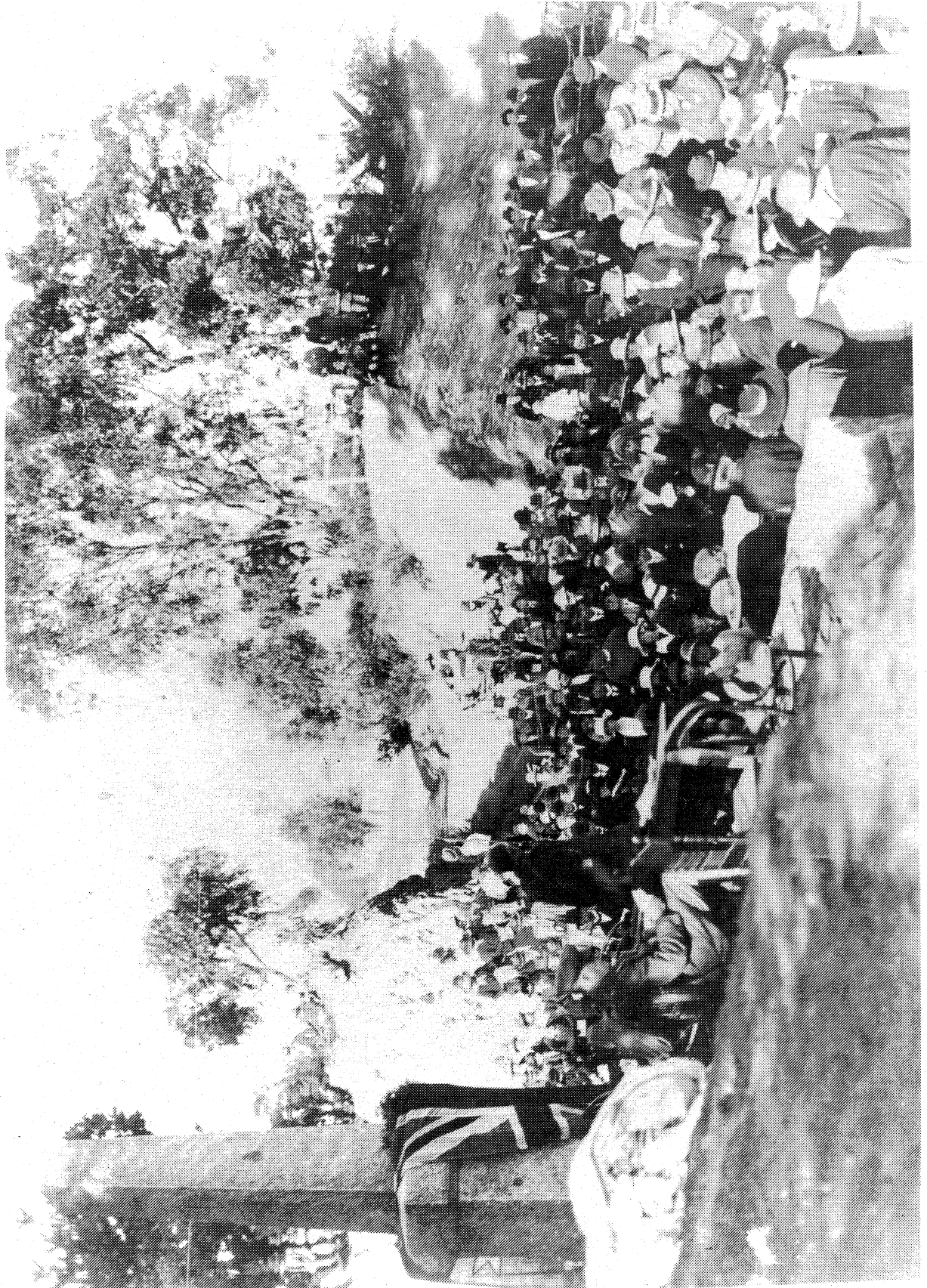
1. Old photographs in ELHPC, nos. 621, 622, 712 and 713 - copies of two attached.

CONSERVATION GUIDELINES:

Keep intact.
Regular maintenance as necessary.
Enhancement of the setting of the memorial with further planting is desirable.

Eltham First and Second World War Memorial, 804 Main Road
Cont.

*UNVEILING THIS WAR MEMORIAL - THE REV. PADRE CHARLES TREGEAR
ASSISTED BY THE CHURCH OF ENGLAND VICAR SAFSFORD
(ELHPC NO. 621)*



Eltham First and Second World War Memorial, 804 Main Road
Cont.

*PHOTOGRAPH OF THE WAR MEMORIAL ON ITS ORIGINAL SITE AT THE
CORNER OF MAIN ROAD AND BRIDGE STREET (ELHPC NO.)*



Eltham First and Second World War Memorial, 804 Main Road
Cont.

