

WINGROVE PARK
MAIN ROAD,
ELTHAM.

THEMES ILLUSTRATED BY THIS PLACE:

ARTISTS AND THE ELTHAM
LANDSCAPE

REMNANT NATIVE VEGETATION

BASIS OF SIGNIFICANCE:

ILLUSTRATION OF THE THEMES
HISTORY
LANDSCAPE
STREETScape

DEGREE OF SIGNIFICANCE:

LOCAL SIGNIFICANCE

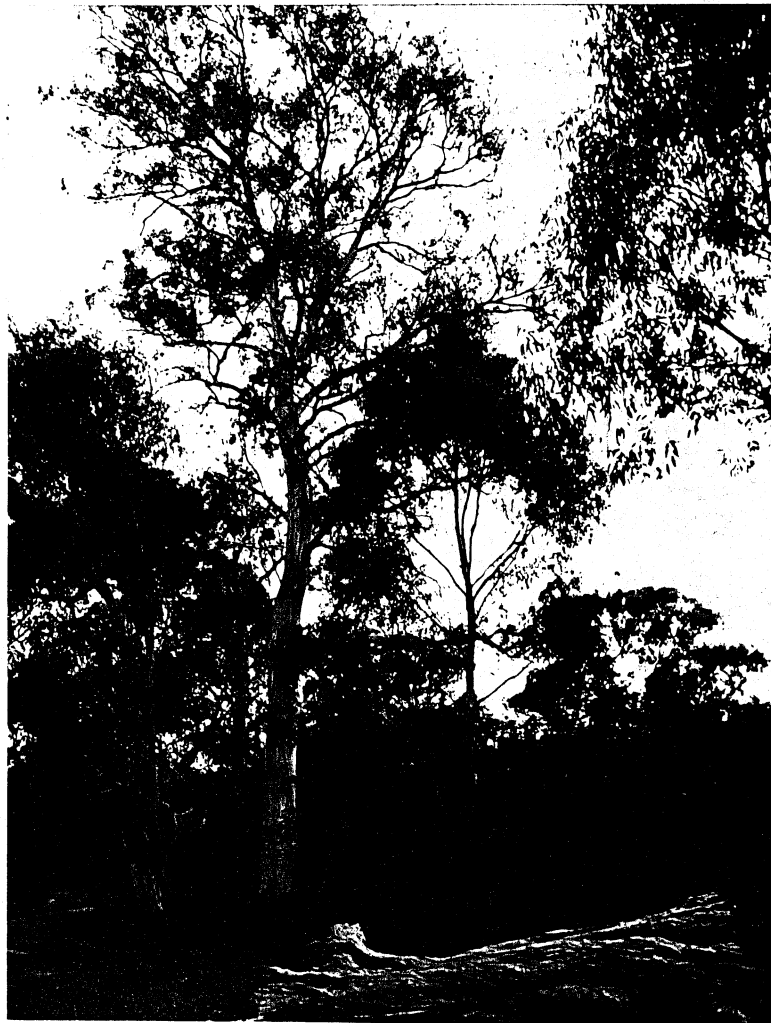
EXTENT OF SIGNIFICANCE:

ENTIRE PARK

RECOMMENDATIONS:

LOCAL PLANNING PROTECTION

CONSERVATION AREA - ELTHAM
GATEWAY



MANNA
GUM TREES
IN
WINGROVE
PARK

Wingrove Park, Main Road Cont.

CULTURAL SIGNIFICANCE:

Wingrove Park is primarily significant for its historical value as a place where travellers would stop and camp overnight. It was formerly known as Bremner's Reserve and Gazetted a water reserve. It was also a place where artists would come and paint. Max Meldrum, for instance, rented a house opposite the park in 1921 and loved to paint the surrounding area, which was shown in an early 1920s exhibition. Nowadays the park retains some fine examples of remnant native trees along Diamond Creek, particularly Manna Gums *Eucalyptus viminalis*, which merit individual protection; some of the Manna Gums have scars of aboriginal origin.

DESCRIPTION:

Wingrove Park is an informal park set on the edge of Diamond Creek and features a meandering pathway which runs through a landscape of indigenous trees and some groups of Prunus species at the northern end. Many of the trees are very large Manna Gums in excellent condition. Other trees have been planted quite recently. Apart from the immediate creek edge where understorey shrubs exist, areas between the trees are grass which is slashed regularly. The park has a natural quality and has a simple character typical of Eltham.

CONSERVATION GUIDELINES:

Maintain existing park character and minimise any further development.
Any new plantings should be species related particularly to the riverine environment.
Maintain "low-key" management practices.