

MONTEREY CYPRESS TREE -
Cupressus macrocarpa,
"FERGUSON'S PADDOCK",
HURSTBRIDGE-ARTHURS CREEK ROAD,
HURSTBRIDGE.

PLANTED:

CIRCA 1880

THEMES ILLUSTRATED BY THIS PLACE:

EARLY SETTLEMENT

PRIVATE PLANTING

BASIS OF SIGNIFICANCE:

**ILLUSTRATION OF THE
THEMES
HORTICULTURE
STREETScape**

DEGREE OF SIGNIFICANCE:

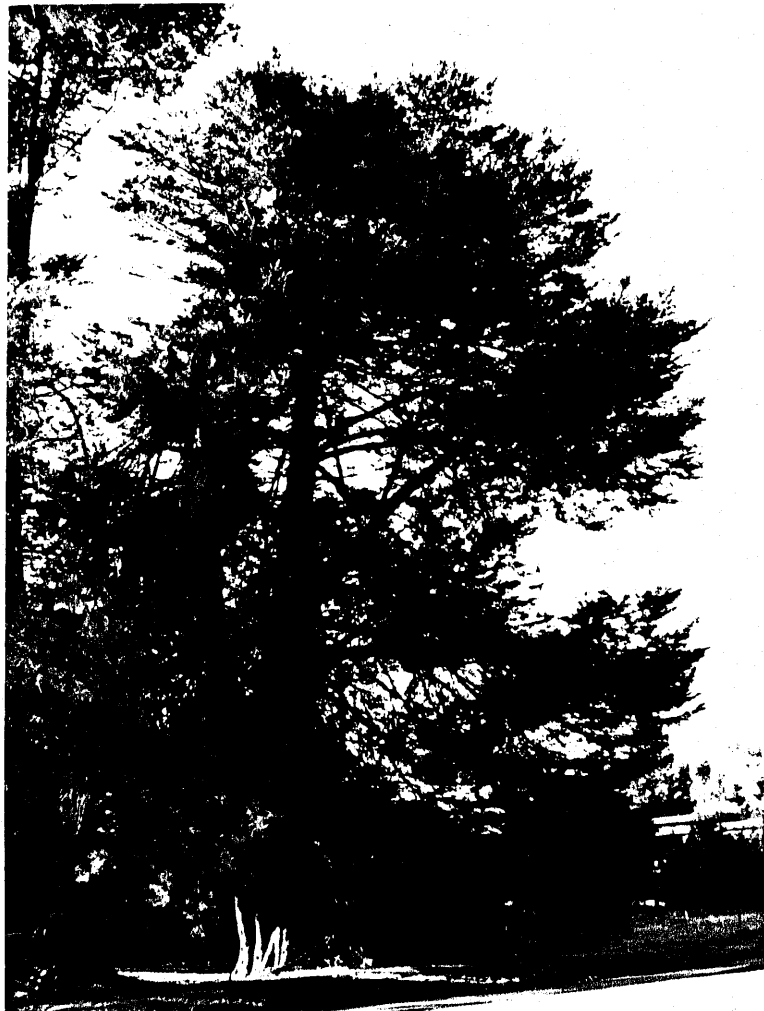
LOCAL SIGNIFICANCE

EXTENT OF SIGNIFICANCE:

**ENTIRE TREE AND SITE TO A
RADIUS OF 10 METRES**

RECOMMENDATIONS:

LOCAL PLANNING PROTECTION



Monterey Cypress Tree, Hurstbridge-Arthurs Creek Road Cont.

CULTURAL SIGNIFICANCE:

This is a tree of substantial size and age, certainly one of the oldest of this species in the district and would date from the early settlement of the area.

DESCRIPTION:

This is a very large tree located by the edge of the road at the entry to Ferguson's Paddock. It is showing some signs of aging and wind damage with a large broken limb.

CONSERVATION GUIDELINES:

It should be assessed by a qualified arboriculturalist and the recommended works implemented.