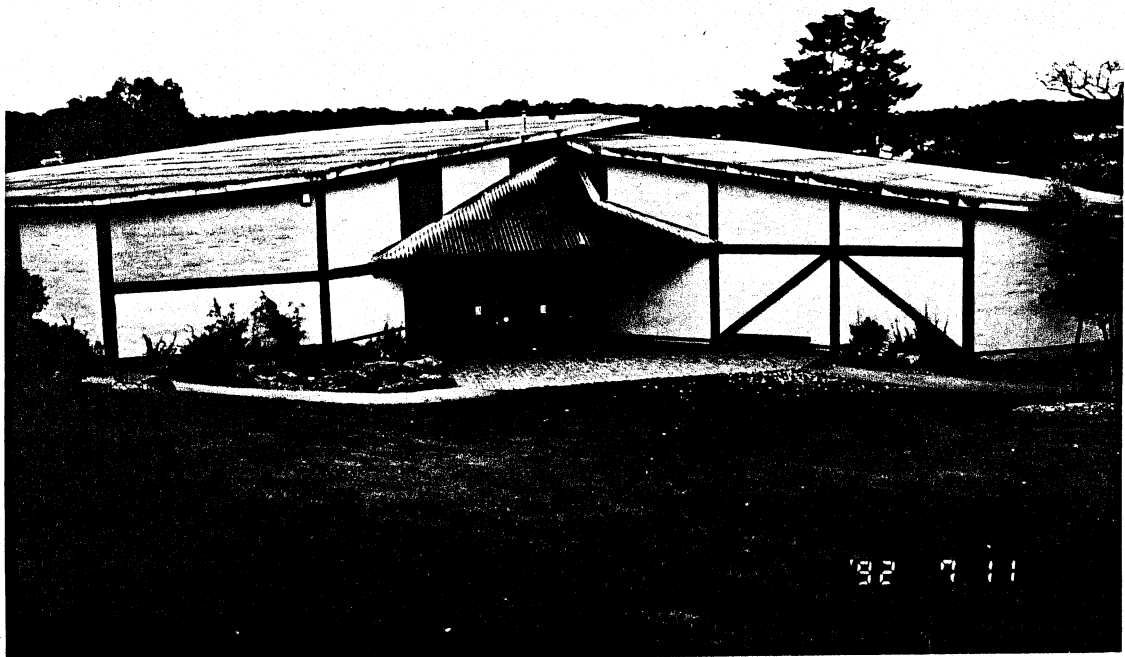


1) ELTHAM COMMUNITY CENTRE, 2) PEPPERCORN TREE (*Schinus molle*), 3) MATURE EXOTIC PLANTING AND 4) WHEEL RIM (TYRING) TOOL IN THE GROUNDS, OFF MAIN ROAD, ELTHAM.

BUILT:	1977 - 1978 <sup>2</sup> CIRCA 1920 PEPPERCORN TREE
THEMES ILLUSTRATED BY THIS PLACE:	DISTINCTIVE ELTHAM BUILDING STYLES SUBURBAN DEVELOPMENT
BASIS OF SIGNIFICANCE:	ILLUSTRATION OF THE THEMES ARCHITECTURE SOCIAL HORTICULTURE
DEGREE OF SIGNIFICANCE:	LOCAL SIGNIFICANCE
EXTENT OF SIGNIFICANCE:	ENTIRE BUILDING, ALL MATURE EXOTIC PLANTING, WHEEL RIM TOOL AND SITE TO A RADIUS OF 30 METRES
RECOMMENDATIONS:	LOCAL PLANNING PROTECTION CONSERVATION AREA - ELTHAM GATEWAY





- 1) Eltham Community Centre, 2) Peppercorn Tree, 3) Mature Exotic Planting and 4) Wheel Rim (Tyring) Tool in the Grounds, Off Main Road Cont.

#### CULTURAL SIGNIFICANCE:

The Community Centre is arguably the Shire's finest adobe public building in the Eltham style. The use of the combination of mud brick, exposed feature timber framing and creative design is characteristic of the innovative buildings and the social movement behind them that exemplifies Eltham in the period from the 1940s to the 1970s and is termed by this Study the Eltham style. The very unusual, if not unique, cavity adobe wall construction was the result of the building unions not being prepared to construct the building using the traditional single thickness mud brick, due to its weight.<sup>2</sup> The mature exotic site planting illustrates earlier land use in a part of Eltham that was one of the first to be settled. The Peppercorn tree is a large and good example of this species. The wooden spoked wheel rim tool illustrates a technology that was an important part of life during the horse-powered age and since almost completely disappeared, along with the nearby blacksmith's shop that housed it previously.

#### HISTORY:

Original and Continuing Use: Community Centre  
Architects: Whitford and Peck<sup>2</sup>

The Eltham Community Centre was opened by the then Shire President, Mr. Robert Marshall.<sup>2</sup> The building union concerns with the weight of the mud bricks were removed by retaining the traditional height and width, but halving their depth and thus weight.<sup>2</sup> The wheel rim tool was installed in the grounds in recent years to ensure its preservation.

#### DESCRIPTION:

##### Building

Style Eltham Style.

Design unique.

Plan polygonal.

Single storeyed.

Walls cavity adobe, timber? framed?.

Roof pitched.

Features are the design of the building, construction using exposed timber framing and solid walls, various roof shapes and the diagonally glazed western end.

1) Eltham Community Centre, 2) Peppercorn Tree, 3) Mature Exotic Planting and 4) Wheel Rim (Tyring) Tool in the Grounds, Off Main Road Cont.



1) Eltham Community Centre, 2) Peppercorn Tree, 3) Mature Exotic Planting and 4) Wheel Rim Tool in the Grounds, Off Main Road  
Cont.

300MM of the trunk of a tall Bhutan Cypress (*Cupressus torulosa*). The Peppercorn is quite large, being 10-12 Metres in height and having a trunk diameter of 700-800MM approximately. It is in good condition and has only a small amount of dead wood in the canopy.

SOURCES:

1. Old photograph in ELHPC, no. 753 - copy attached.

CONSERVATION GUIDELINES:

Building

Keep intact.

Regular maintenance as necessary.

Ensure all roof and ground-water is collected and carried well from the building.

When repainting use original/appropriate paint colours and placement externally.

Site

Develop a landscape master plan which identifies and conserves all mature exotic planting and supplements it as necessary.

Also maintain and provide appropriate native planting and landscaping around the building.

Peppercorn tree

The site of this tree (and of the other significant mature exotic planting on the site) should be protected for a radius of 10 Metres from disturbance to its roots, such as by excavation or filling works.

Minor tree surgery should be undertaken to enhance the condition of this tree.

The Bhutan Cypress should also be protected as it contributes to the interest of this part of the site.

1) Eltham Community Centre, 2) Peppercorn Tree, 3) Mature Exotic Planting and 4) Wheel Rim Tool in the Grounds, Off Main Road  
Cont.

*THE BLACKSMITH'S SHOP WHICH WAS IN MAIN ROAD OPPOSITE PITT  
STREET - BLACKSMITH SID BROWN IS TO THE RIGHT  
(ELHPC NO. 753)*

