

CITY OF DONCASTER & TEMPLESTOWE HERITAGE STUDY.

1,2 & 3 EXFORD CLOSE, DONVALE. A27.

HISTORY : Merchant Builders Pty. Ltd was the most innovative project house building firm in Australia since the early A.V. Jennings estates of the mid-1930s. It was founded by David Yencken and John Ridge in 1965 to produce good architecture at an affordable price. Each house was designed by an architect, who consulted on its siting and landscaping was carefully related to the design. This was their sixth display centre. No.1 Exford Close won second prize in Merchant's System House competition in 1972. It was designed by John Reid of Keith Reid and John R. Reid.¹ No.2 may be a "Cellar House CH2" by Graeme Gunn (1972). No.3 is the "Patio House P1", by important domestic architect Charles Duncan in 1972. This was known as the Holly Green Place Centre. Both Duncan's and Reid's houses were first built here.

VISUAL DESCRIPTION : No.2 Exford Close is almost totally obscured by a luxuriant bush garden, with brick-paved paths. No.3 has fawn brick walls with dark stained timber. The old triple-fronted plan is reworked, to cleverly achieve separate courtyard spaces for each living room, with a side entry. Deep eaves, pergolas and a brick wing walls are other characteristics. The landscaped garden is native bush inspired.

COMPARATIVE ANALYSIS : Comparable to Merchant Builders' estates at 37 & 66-70 Olympus Drive, Templestowe Lower and 4-12 Beverley Hills Drive, Templestowe (1987), in particular; but also to Winter Park, 137-141 High Street, Doncaster (1970-75); 412-418 Porter Street (cnr Blackburn Road) Templestowe (1989). Also comparable to Landmark display houses at 28,30 & 32 Rosco Drive, Templestowe (1978-81), Fasham & Johnson's house at 34 Rosco Drive (1987-88) and the Merchant's house at 9 Rosco Drive.

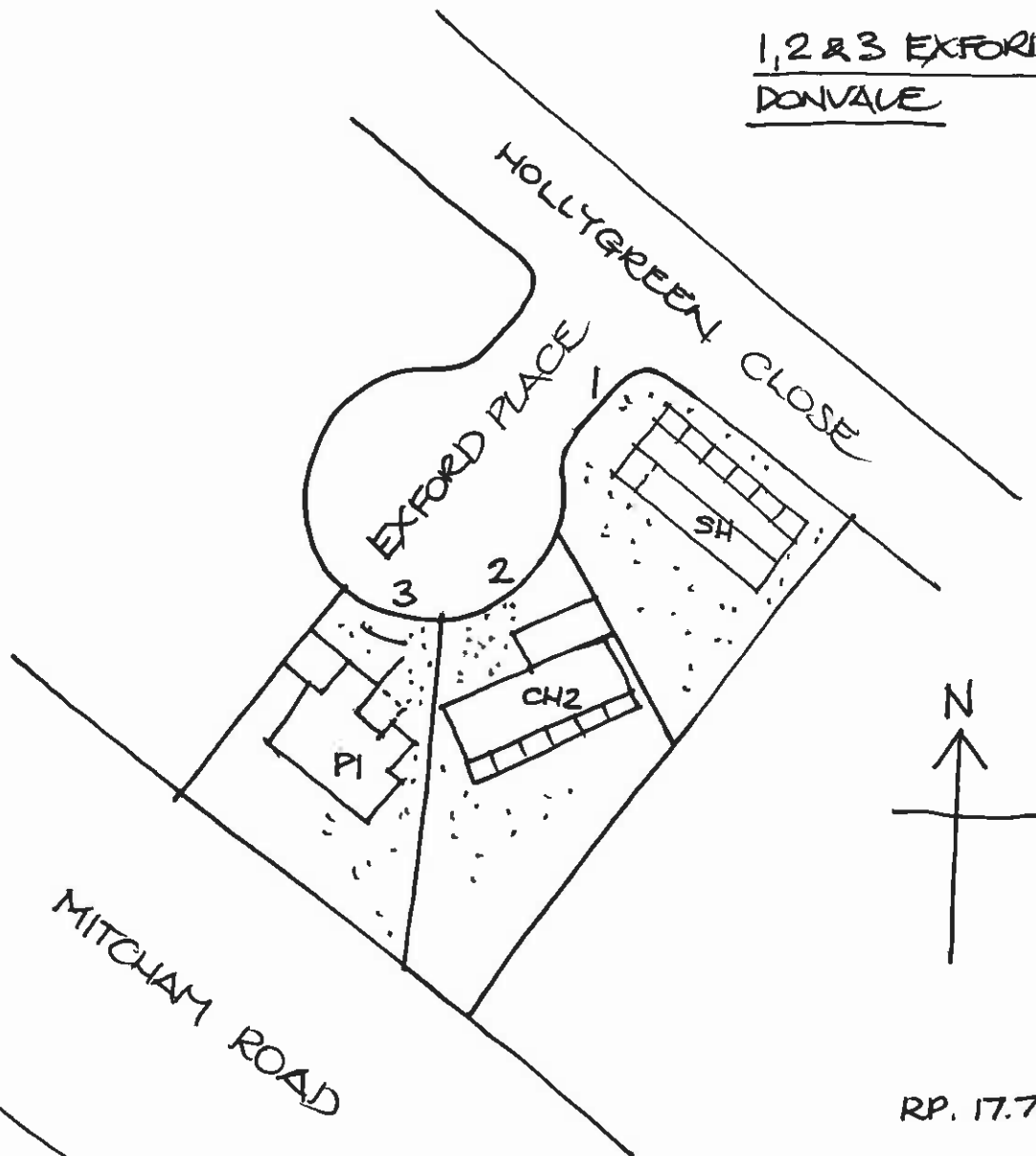
SIGNIFICANCE : Nos.1-3 Exford Place are of local architectural significance as a group of carefully sited and landscaped project houses designed by important domestic architects Graeme Gunn, John Reid and Charles Duncan in 1972. Both Duncan's and Reid's designs were first built here. This was Merchant Builders Pty. Ltd. sixth display centre.

INTACTNESS : No.2 has a large but sympathetic 3 car garage built in front. No.3 appears to be intact.

CONDITION & THREATS : Apparently excellent.

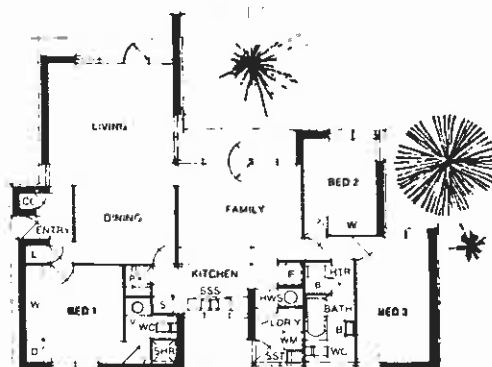
REFERENCES : 1. Architecture Today Annual - Buildings of the Year 1973, p.41.
2. Heritage Study, p.155 (214.21), which this sheet supersedes.

1, 2 & 3 EXFORD PLACE
DONVALE

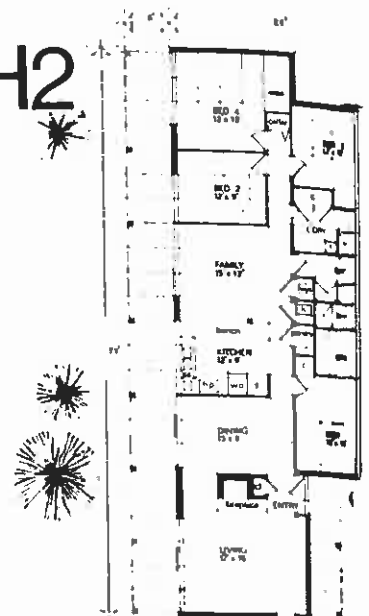


RP. 17.7.93.

The Patio House at Holly Green Close
Designed by Charles Duncan.



CH2



Cellar house