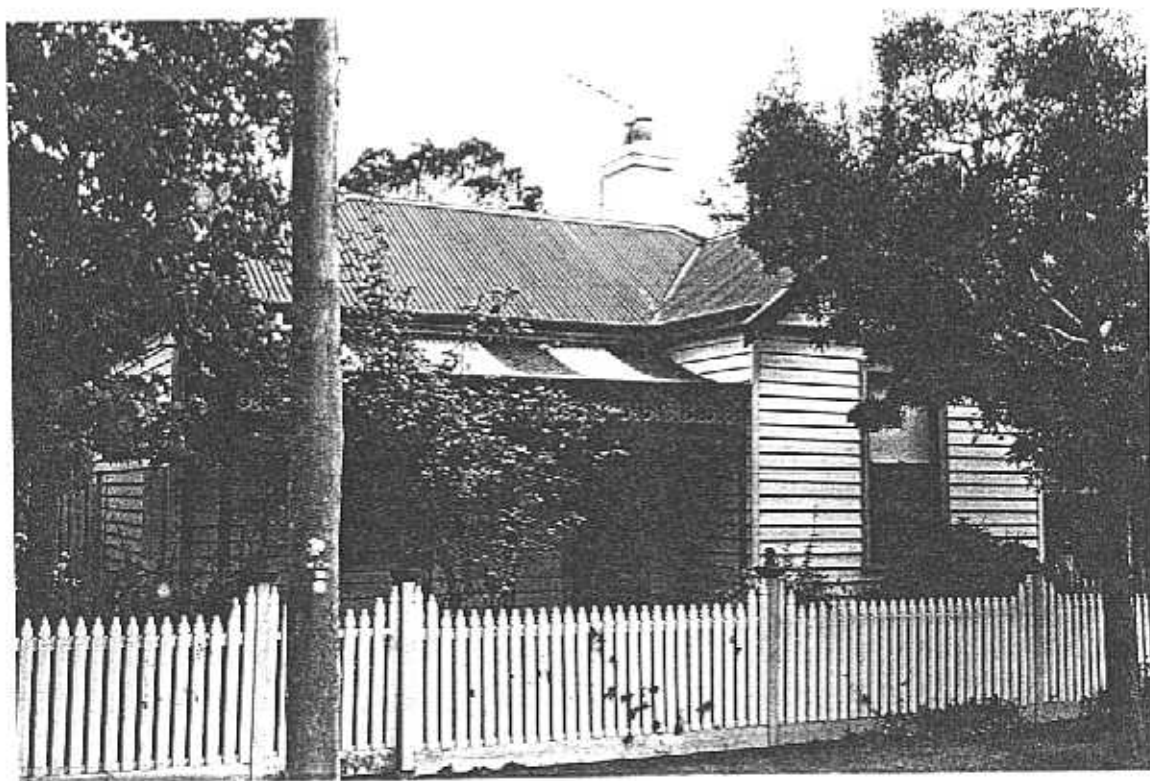


**NEWTOWN URBAN CONSERVATION STUDY. - 'C' CITATIONS. Ref: 252**

Richard Peterson Architect & Conservation Consultant. 1997.

<b>NAME:</b> Craighleigh	
<b>ADDRESS:</b> 16 Virginia Street	
<b>USE:</b> House	<b>CONSTRUCTION DATE:</b> 1879-84 <b>SOURCE:</b> 1
<b>SIGNIFICANT DATE:</b>	<b>DATE:</b> 1970s <b>SOURCE:</b> Visual
<b>ADDITIONS:</b>	<b>BUILDER:</b>
<b>DESIGNER:</b>	<b>HISTORIC THEME:</b> 2.3
<b>CRITERIA:</b> H1; Ar1	
<b>DESCRIPTION:</b> STYLE: Early Victorian	<b>STORIES:</b> 1 <b>DETACHED.</b>
<b>MATERIALS:</b> WALLS Timber	<b>ROOF:</b> Iron <b>STRUCTURE:</b> Stud
<b>CONDITION:</b> Very good	<b>INTACTNESS:</b> Very good <b>THREATS:</b> —
<b>SIGNIFICANT INTACT ELEMENTS:</b>	
FORM. FACADE. VERANDAH. ROOF FORM. VERANDAH DECORATION. CHIMNEY. Pots. DOOR. WINDOWS.	
<b>SIGNIFICANCE:</b>	
<b>TYPE:</b>	HISTORICAL. ARCHITECTURAL.
<b>LEVEL:</b>	LOCAL.
<b>DESIGNATION EXISTING:</b>	PLANNING SCHEME.
<b>RECOMMENDED CONTROL:</b>	PLANNING SCHEME.
<b>SURVEY:</b> RP <b>DATE:</b> 29.3.1997 <b>NEGS:</b> 10.18 & 12&1.14	



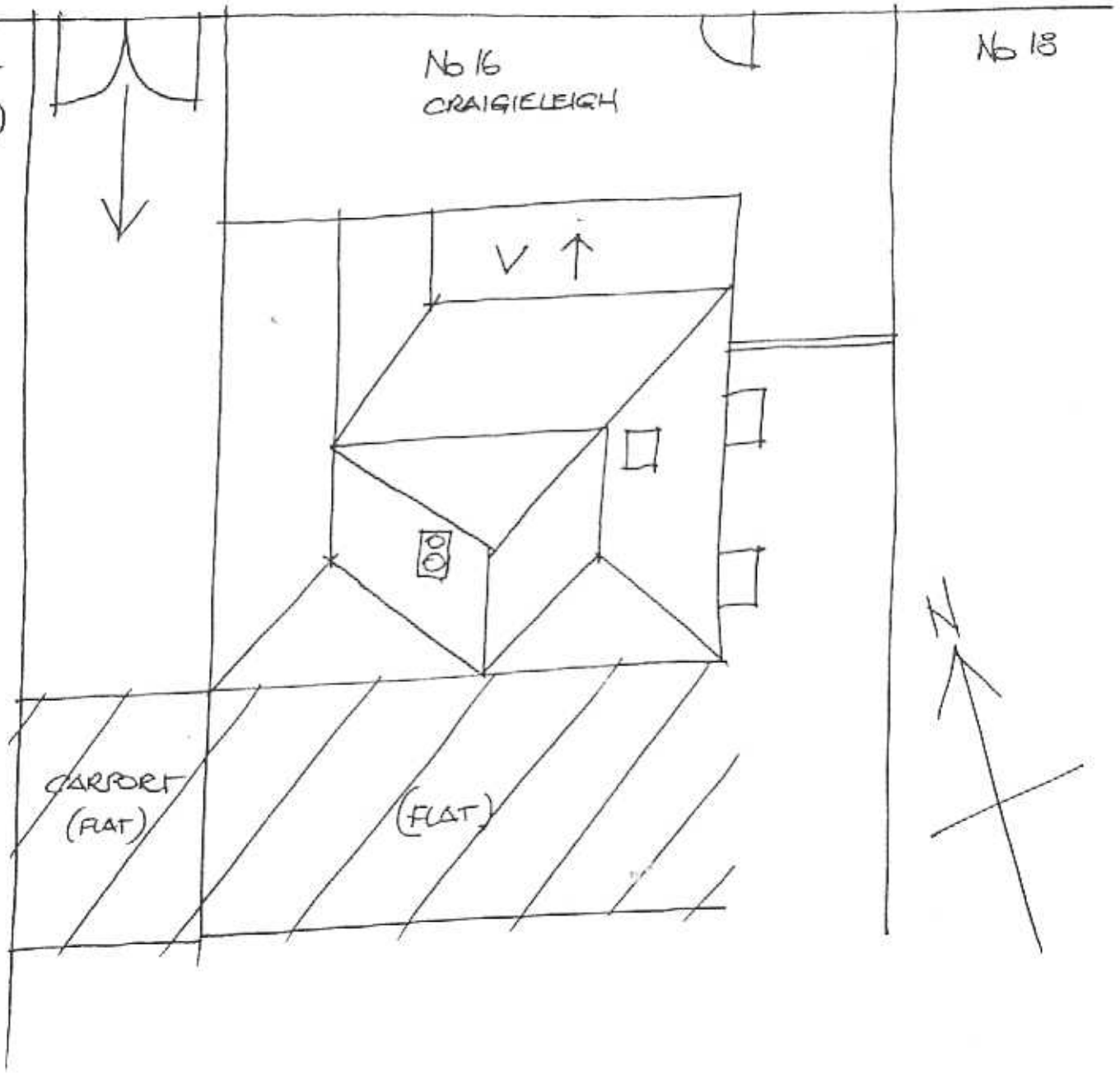
252

VIRGINIA STREET

Nb 14  
250

Nb 16  
CRAIGIELEIGH

Nb 18



RP. 29.3.97 N.T.S.

RECENT ADDITIONS:



*Richard Peterson Architect & Conservation Consultant 1997.*

**HISTORY:** In 1879 Thomas Harris owned fenced land measuring 50' x 110'. The rate books for the following five years are missing but in 1884 this block of land measured 59'9" x 100', had timber buildings on it and was owned and occupied by Thomas Harris, a clerk. In 1890 Marcia Harris was the owner and occupier but she moved out after a few years and rented the house to John Johnstone. About 1900 Lewis Leigh, a civil servant, bought the cottage, now described as having five rooms, and moved in himself. Leigh lived there until c1915, during which time the house was described as having 6 rooms and was called 'Craigielea'. He sold to Joseph Helms, a dentist, who was still living there in 1925.<sup>1</sup>

**VISUAL DESCRIPTION:** A double-fronted timber early Victorian (style) cottage, with a hipped roof. The right wing projects as a gable, the upper section jettying. The concave skillion verandah is in the angle with cast-iron lace valance over a rail. Chimneys are rendered with Classical moulds and one has two pots. At left are two skillion windowhoods, supported on unusual ogee brackets with chrysanthemum fretwork motif. The panelled door is in the angle, with fanlight. The chrysanthemum derives from the Japanese influence on the Aesthetic movement in England from the 1860s.

**SIGNIFICANCE:** A characteristic early Victorian timber cottage, yet built between 1879 and 1884 with interesting frieze brackets. It is architecturally significant as a representative late example of this domestic style and historically in embodying the life of a white collar family of the early 1880s in Newtown.

**INTACTNESS:** Very good. The fence is recent.

**CONDITIONS & THREATS:** Very good.

---

<sup>1</sup> City of Newtown and Chilwell Ratebooks.