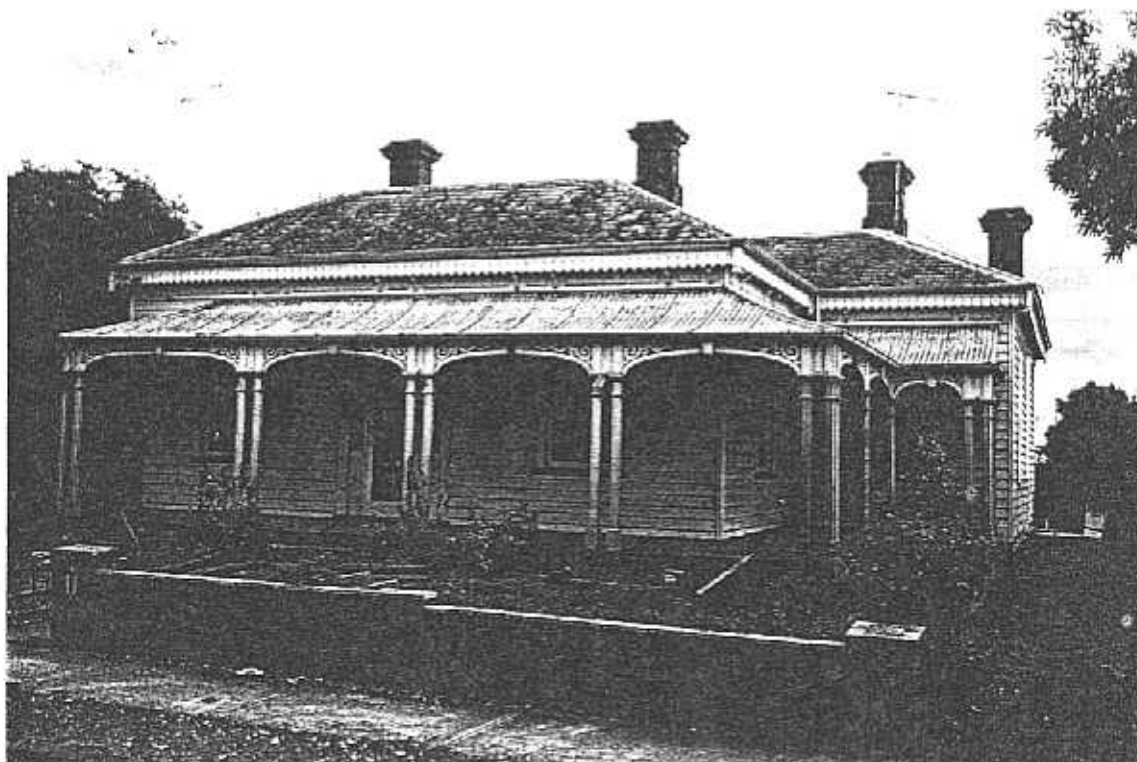


**NEWTOWN URBAN CONSERVATION STUDY. - 'C' CITATIONS.** Ref: 254  
 Richard Peterson Architect & Conservation Consultant. 1997.

<b>NAME:</b> —			
<b>ADDRESS:</b> 20 Virginia Street			
<b>USE:</b> House			
<b>SIGNIFICANT DATE:</b>	<b>CONSTRUCTION DATE:</b> 1876	<b>SOURCE:</b> 1	
<b>DESIGNER:</b> —	<b>BUILDER:</b> William Purnell		
<b>CRITERIA:</b> H1; Ar1	<b>HISTORIC THEME:</b> 2.3		
<b>DESCRIPTION:</b>	<b>STYLE:</b> Late Italianate	<b>STORIES:</b> 1	<b>DETACHED.</b>
<b>MATERIALS:</b>	<b>WALLS:</b> Timber	<b>ROOF:</b> Slate	<b>STRUCTURE:</b> Stud
<b>CONDITION:</b> Fair	<b>INTACTNESS:</b> Very good	<b>THREATS:</b> Maintenance	
<b>SIGNIFICANT INTACT ELEMENTS:</b>			
MATERIALS. Slate FORM. FACADE. VERANDAII. ROOF FORM. EAVES DECORATION. VERANDAII DECORATION. CHIMNEYS. DOOR. WINDOWS.			
<b>SIGNIFICANCE:</b>			
<b>TYPE:</b>	HISTORICAL. ARCHITECTURAL.		
<b>LEVEL:</b>	LOCAL.		
<b>DESIGNATION EXISTING:</b>	PLANNING SCHEME.		
<b>RECOMMENDED CONTROL:</b>	PLANNING SCHEME.		
<b>SURVEY:</b> RP <b>DATE:</b> 29.3.1997 <b>NEGS:</b> 10.20 & 1281.16			

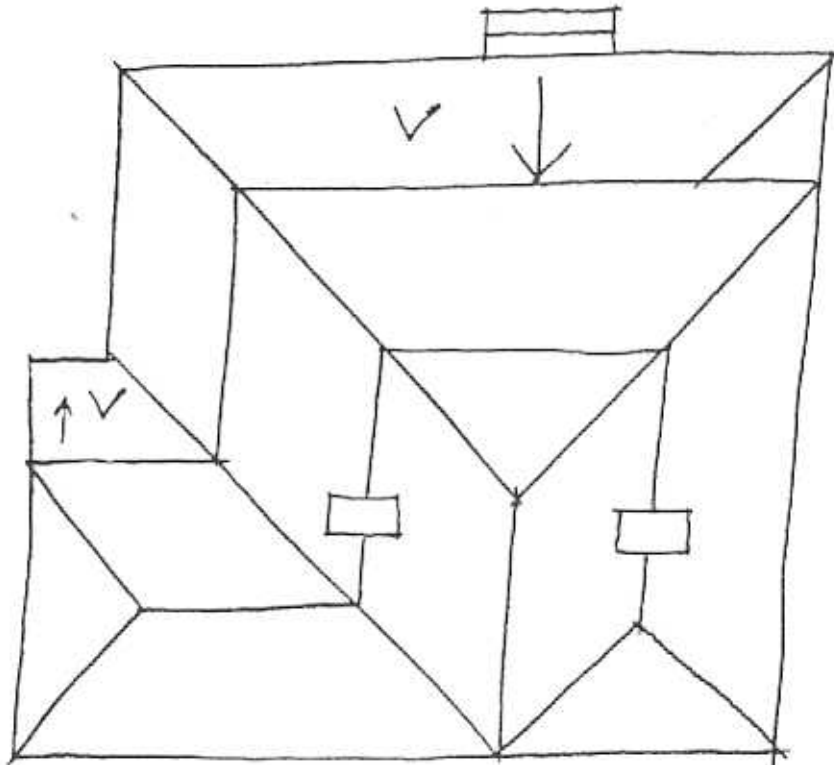


254.

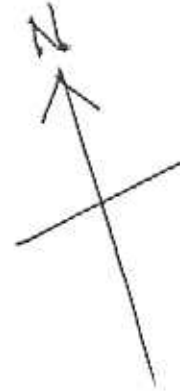
VIRGINIA STREET

No 18

No 20



RP. 29.3.97 NTS.



**HISTORY:** In 1876 the landowner and agent William Purnell had a seven room timber house built on this block and sold it to Mr Bunning, a Minister. Mr Bunning lived in it until c1885 when he sold to Samuel Webber. Webber built an extra room and rented the house. He owned it for many years and, c1905 it was passed on to his wife and widow Margaret Webber. During this time it was rented to Alexander Stewart, school inspector; Alfred Price, grocer; Henry Buckland, clerk; Rupert Pincott, medical practitioner; Arthur Daniel, ironmonger; Rose Nicholls; and Elizabeth Sasse—the tenants changing approximately every 5 years. In 1925 Margaret Webber had moved into her own house and it was measured as 53' x 110.<sup>1</sup>

**VISUAL DESCRIPTION:** A generally symmetrical double-fronted timber late Italianate house with a wing projecting right side rear. The concave hipped verandah extends across, returning across this wing. It has Doric post-pairs, with panels between and a decorative curlicue fretwork, arched valance, with mock keystones. Rendered chimneys have Classical moulds. The eaves have a shield-shaped valance over ogee bracket pairs, with long and short panels between over a frieze-mould. The entrance has side and fanlights, with a four-panelled door. The verandah has a bluestone base.

**COMPARATIVE ANALYSIS:** The shield-motif occurs also at no. 17 (253) which prior to alteration, quite possibly once resembled this house.

**SIGNIFICANCE:** A characteristic late Italianate timber house built in 1876, possibly with the right wing added in c1885 by the new owner. It is architecturally significant locally as representative of this domestic style and historically in embodying life in Newtown in the mid 1880s.

**INTACTNESS:** Very good. The fence and gates are c1940.

**CONDITIONS & THREATS:** Fair.

---

<sup>1</sup> City of Newtown and Chilwell Ratebooks.