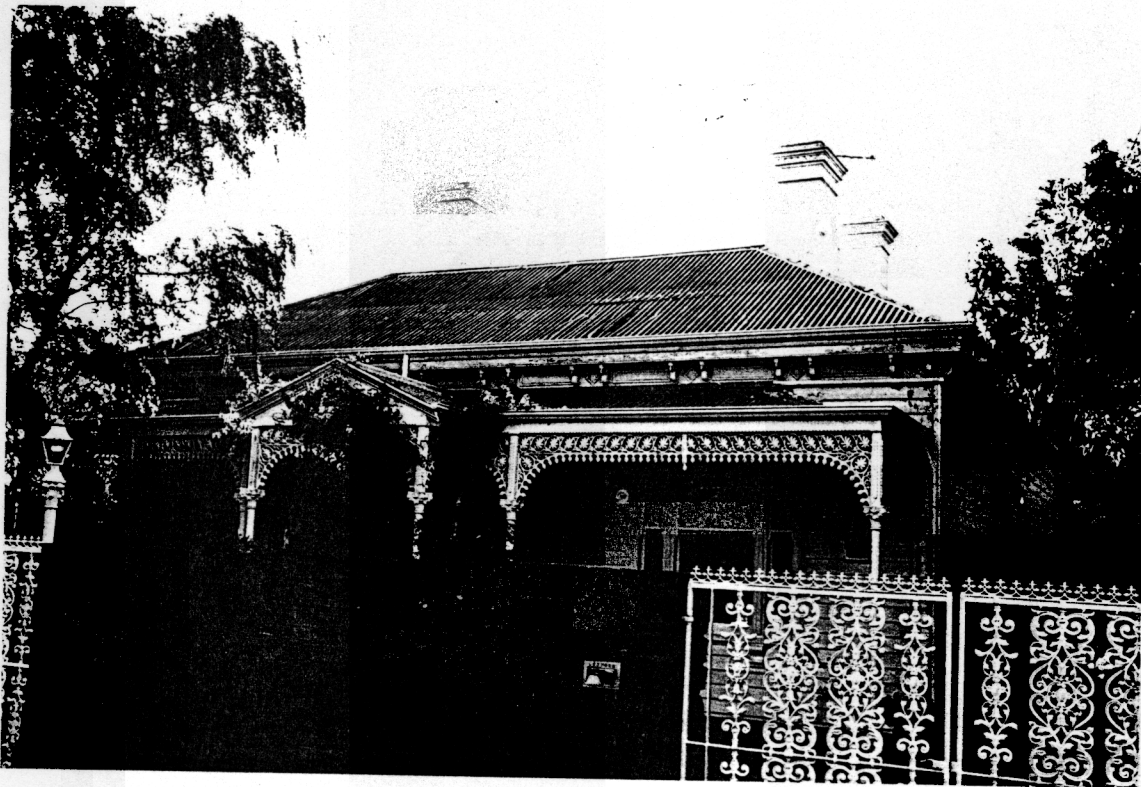


**NEWTOWN URBAN CONSERVATION STUDY. - 'C' CITATIONS.** Ref: 257  
 Richard Peterson Architect & Conservation Consultant. 1997.

<b>NAME:</b> —	
<b>FORMER NAME:</b>	Moorak
<b>ADDRESS:</b>	30 Virginia Street
<b>USE:</b> House	
<b>SIGNIFICANT DATE:</b>	<b>CONSTRUCTION DATE:</b> 1890 <b>SOURCE:</b> 1
<b>DESIGNER:</b> —	<b>BUILDER:</b> —
<b>CRITERIA:</b> H1; Ar1	<b>HISTORIC THEME:</b> 2.3
<b>DESCRIPTION:</b> STYLE: Italianate	STORIES: 1    DETACHED.
<b>MATERIALS:</b> WALLS Timber	ROOF Iron    STRUCTURE Stud
<b>CONDITION:</b> Reasonable	INTACTNESS: Very good    THREATS: Maintenance
<b>SIGNIFICANT INTACT ELEMENTS:</b> FORM. FACADE. VERANDAH. ROOF FORM. EAVES DECORATION. VERANDAH DECORATION. CHIMNEYS. DOOR. WINDOWS. CONTEXT Nos: 28 & 31.	
<b>SIGNIFICANCE:</b>	
<b>TYPE:</b>	HISTORICAL. ARCHITECTURAL.
<b>LEVEL:</b>	LOCAL.
<b>DESIGNATION EXISTING:</b>	PLANNING SCHEME.
<b>RECOMMENDED CONTROL:</b>	PLANNING SCHEME.
<b>SURVEY:</b> RP <b>DATE:</b> 29.3.1997 <b>NEGS:</b> 10.24 & 1281.20	



**HISTORY:** In 1890 Marcus Collins, woollen manufacturer, had a seven room cottage with bathroom, pantry and scullery built on his 50' of land. He lived there for about 20 years, c1900 he called the house Moorak. He sold to Reubin Piper who rented the house to Annie Williams for a few years before moving in himself. In 1925 Piper was still the owner and occupier of this house.<sup>1</sup>

**VISUAL DESCRIPTION:** A double-fronted symmetrical timber Italianate house with a hipped roof. The hipped verandah extends across the front with a central projecting gable over the entrance. This has an insert cast-iron lace triangular grille with coin-mould below and on the posts, with dogtooth over. Weatherboards are beaded. The entrance has side and fanlights, with a panelled door. Windows are tripartite on ogee brackets.

**SIGNIFICANCE:** A characteristic symmetrical timber Italianate house built in 1890. It has architectural significance locally as representative of this domestic manner and historically in embodying life of a woollen mill-owner's family in Newtown in the confident years immediately prior to the economic crash of 1892.

**INTACTNESS:** Very good. The high fence and gates are not appropriate.

**CONDITIONS & THREATS:** Reasonable. The roof may need maintenance.

---

<sup>1</sup> City of Newtown and Chilwell Ratebooks.