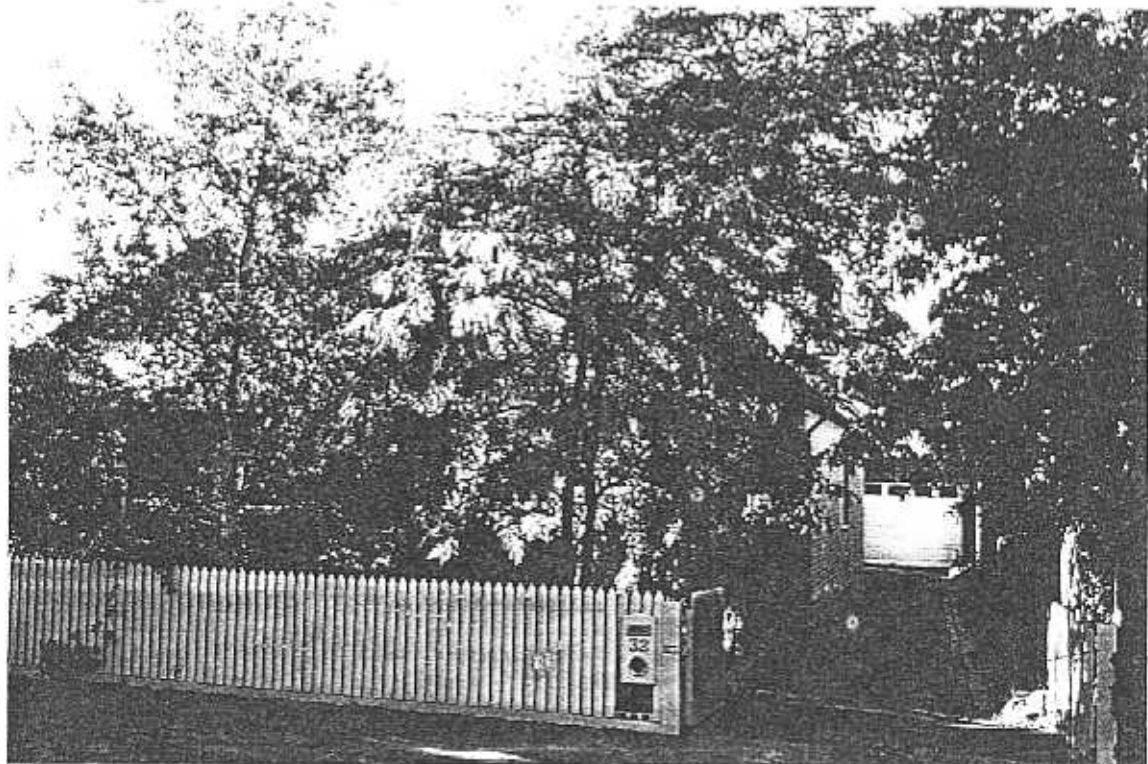


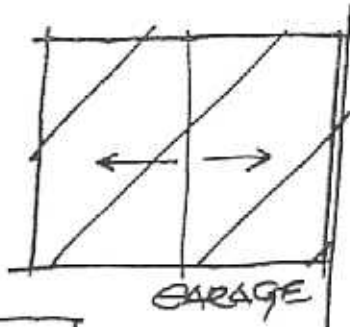
**NEWTOWN URBAN CONSERVATION STUDY. - 'C' CITATIONS. Ref: 259**  
 Richard Peterson Architect & Conservation Consultant. 1997.

<b>NAME:</b> —			
<b>ADDRESS:</b> 32 Virginia Street			
<b>USE:</b> House			
<b>SIGNIFICANT DATE:</b>		<b>CONSTRUCTION DATE:</b> 1925	<b>SOURCE:</b> 1
<b>DESIGNER:</b> —		<b>BUILDER:</b> —	
<b>CRITERIA:</b> HI; Ar1		<b>HISTORIC THEME:</b> 2.3	
<b>DESCRIPTION:</b>	<b>STYLE:</b> Bungalow	<b>STORIES:</b> 1	<b>DETACHED.</b>
<b>MATERIALS:</b>	<b>WALLS</b> Brick	<b>ROOF</b> Tiles	<b>STRUCTURE</b> Lb
<b>CONDITION:</b> Excellent	<b>INTACTNESS:</b> Very good	<b>THREATS:</b> —	
<b>SIGNIFICANT INTACT ELEMENTS:</b>			
FORM. FACADE. VERANDAH. ROOF FORM. VERANDAH DECORATION. CHIMNEY. DOORS. WINDOWS. CONTEXT No: 33.			
<b>SIGNIFICANCE:</b>			
<b>TYPE:</b>	HISTORICAL. ARCHITECTURAL.		
<b>LEVEL:</b>	LOCAL.		
<b>DESIGNATION EXISTING:</b>	PLANNING SCHEME.		
<b>RECOMMENDED CONTROL:</b>	PLANNING SCHEME.		
<b>OBSCURED</b>	<b>SURVEY:</b> RP	<b>DATE:</b> 29.3.1997	<b>NEGS:</b> 10.27, 28 & 29

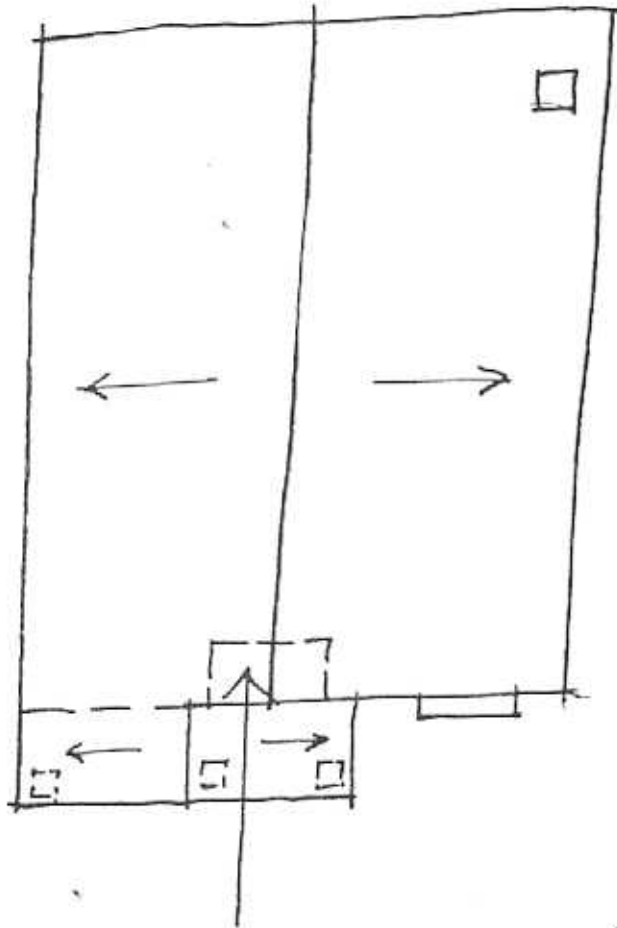




259.



GARAGE



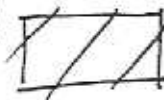
(257)  
No 30

No 34

No 32

VIRGINIA STREET

RP 29.3.97 NTS  
RECENT ADDITION



**HISTORY:** Robert Thear had this brick house built on his land measuring 50' x 110 in 1925.<sup>1</sup>

**VISUAL DESCRIPTION:** A double-fronted brick Californian Bungalow, with a gable tiled roof. The major gable faces and a minor gable projects, facing at left over the verandah. The entrance is centre, recessed with 10-paned French doors. Windows have narrow side sashes, with segmental heads. Lower and canted sashes are all leadlight. The right window is set forward with a flat hood.

Roof tiles are Marseilles pattern, unglazed. Brickwork is red, dyed. Upper gables are timbered with rectangular vents. The verandah appears to have always been a painted concrete slab. The chimney has a plate top on corbels.

**SIGNIFICANCE:** A characteristic brick Californian bungalow (obscured) built in 1925. It is architecturally significant locally as representative of this domestic manner and historically in embodying life in Newtown in the mid 1920s.

**INTACTNESS:** Very good. The fence is recent and anachronistic and not appropriate.

**CONDITIONS & THREATS:** Excellent.

---

<sup>1</sup> City of Newtown and Chilwell Ratebooks.