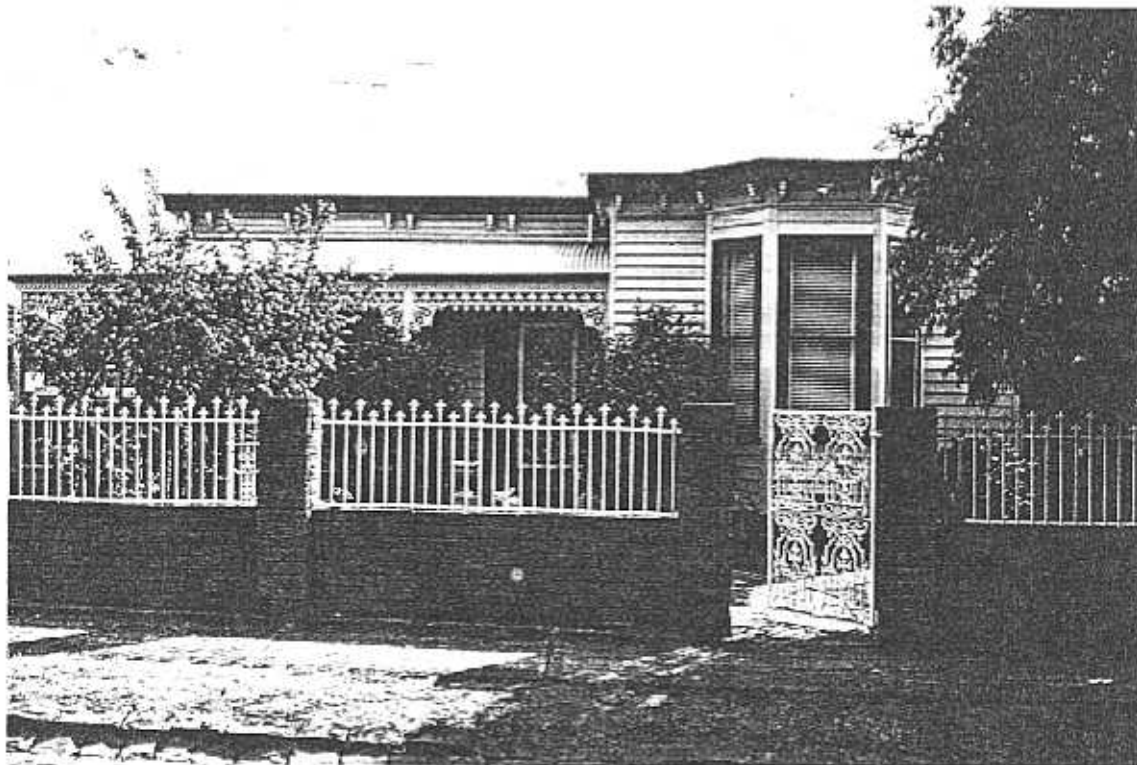


**NEWTOWN URBAN CONSERVATION STUDY. - 'C' CITATIONS.** Ref: 261  
 Richard Peterson Architect & Conservation Consultant. 1997.

<b>NAME:</b> —	
<b>FORMER NAME:</b>	Lebrima
<b>ADDRESS:</b>	36 Virginia Street
<b>USE:</b> House	
<b>SIGNIFICANT DATE:</b>	<b>CONSTRUCTION DATE:</b> 1891-2 <b>SOURCE:</b> 1
<b>DESIGNER:</b> —	<b>BUILDER:</b> —
<b>CRITERIA:</b> III; Ar1	<b>HISTORIC THEME:</b> 2.3
<b>DESCRIPTION:</b>	<b>STYLE:</b> Late Italianate <b>STORIES:</b> 1 <b>DETACHED.</b>
<b>MATERIALS:</b>	<b>WALLS:</b> Timber <b>ROOF:</b> Zincalume <b>STRUCTURE:</b> Stud
<b>CONDITION:</b> Excellent	<b>INTACTNESS:</b> Very good <b>THREATS:</b> —
<b>SIGNIFICANT INTACT ELEMENTS:</b> FORM. FACADE. VERANDAH. EAVES DECORATION. VERANDAH DECORATION. CHIMNEYS. DOOR. WINDOWS. PAINTWORK SCHEME. GARDEN STRUCTURE. Tiled pavement & urns. CONTEXT Nos: 35-37, 39 & 42.	
<b>SIGNIFICANCE:</b>	
<b>TYPE:</b>	HISTORICAL. ARCHITECTURAL.
<b>LEVEL:</b>	LOCAL.
<b>DESIGNATION EXISTING:</b>	PLANNING SCHEME.
<b>RECOMMENDED CONTROL:</b>	PLANNING SCHEME.
<b>SURVEY:</b> RP <b>DATE:</b> 30.3.1997 <b>NEGS:</b> 10.31 & 1281.25	



**HISTORY:** John Molony, post office clerk, had his eight room timber house with bathroom and pantry built in 1891 or 1892 (1891 rate book is missing) and lived in it for a few years. About 1900 he moved out and rented the house to a number of people over the years: Isadore Wartzki, tobacconist; John Charles, Superintendent of Police; George Knight, draper; Fanny Davidson; then Arthur Rashleigh. Around 1900 Molony named the house Lebrima. He still owned it in 1925 when it was measured at 50' x 115'.<sup>1</sup>

**VISUAL DESCRIPTION:** A double-fronted timber Late Italianate house with a hipped roof. The right bay is set forward with a canted bay window expressed at the roof. The bull-nosed hipped roof verandah is in the angle. It has dentillated cornice, cast-iron lace valance and brackets in a maple-leaf pattern, with timber Doric posts.

Chimneys are rendered with Classical moulds. The window at left is tripartite. The entrance has a four-panelled door, side and fan-lights in ruby glass. It retains a pair of urns on plinths and chequerboard diamond encaustic paving. Weatherboards are beaded, over a bluestone ashlar base.

**SIGNIFICANCE:** A timber Late Italianate house built in 1891-2. It is architecturally significant locally as representative of this domestic style. The urns are a relatively rare survival. It is historically significant locally in embodying life in Newtown immediately prior to the financial crash of 1892.

**INTACTNESS:** Very good. The fence and security door are not appropriate. The ballustrade is recent.

**CONDITION:** Excellent

---

<sup>1</sup> City of Newtown and Chilwell Ratebooks.