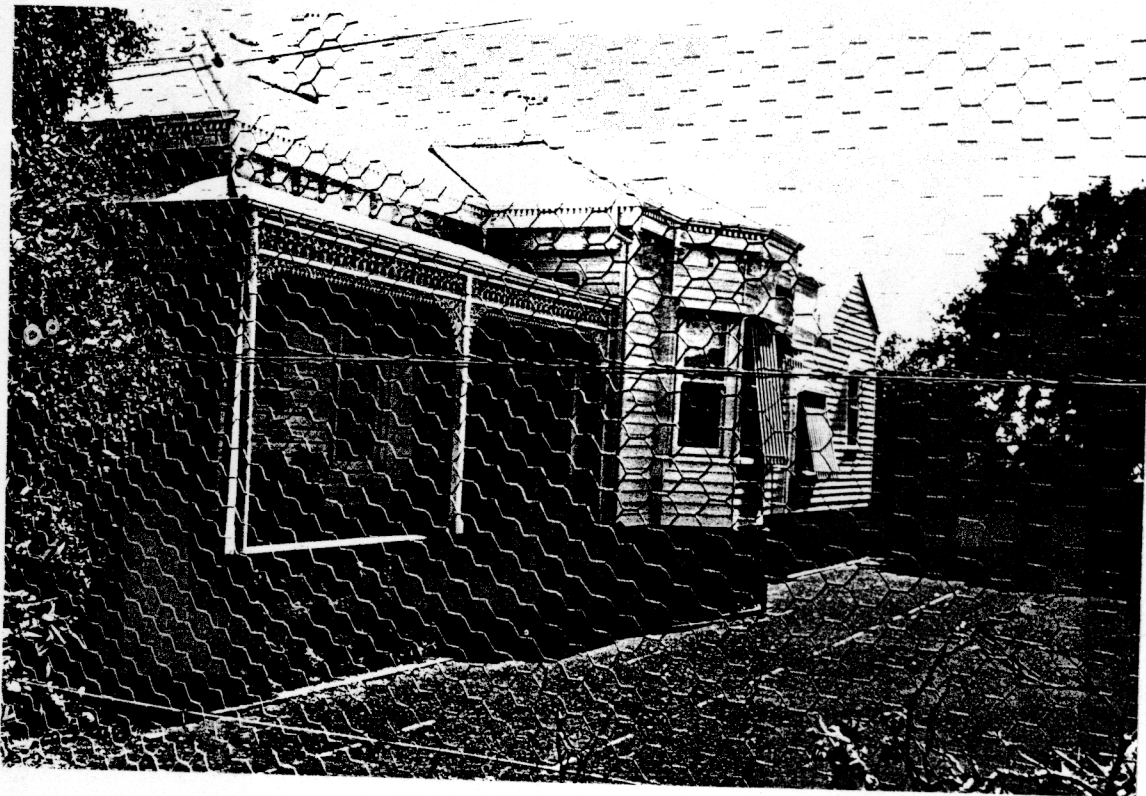


NEWTOWN URBAN CONSERVATION STUDY. - 'C' CITATIONS. Ref: 270
Richard Peterson Architect & Conservation Consultant. 1997.

NAME: —	
ADDRESS: 56 Virginia Street	
USE: House	
SIGNIFICANT DATE: —	CONSTRUCTION DATE: 1879-84 SOURCE: 1
DESIGNER: —	BUILDER: —
CRITERIA: H1; Ar1	HISTORIC THEME: 2.3
DESCRIPTION: STYLE: Late Ital'ate	STORIES: 1 DETACHED.
MATERIALS: WALLS Timber	ROOF: Zincalume STRUCTURE: Stud
CONDITION: Excellent	INTACTNESS: Very Good THREATS: —
SIGNIFICANT INTACT ELEMENTS: FORM. FACADE. VERANDAH. ROOF FORM. EAVES DECORATION. VERANDAH DECORATION. CHIMNEYS. DOOR. WINDOWS. GARDEN STRUCTURE. Edge tiles. CONTEXT Nos: 48, 50 & 52.	
SIGNIFICANCE:	
TYPE:	HISTORICAL. ARCHITECTURAL.
LEVEL:	LOCAL.
DESIGNATION EXISTING:	PLANNING SCHEME.
RECOMMENDED CONTROL:	PLANNING SCHEME.
SURVEY: RP DATE: 30.3.1997 NEGS: 11.5, 6 & 7 & 1281.36	





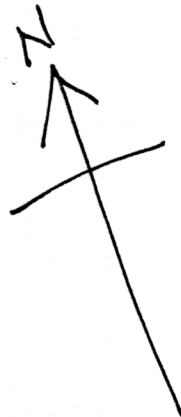
270

GARAGE



TENNIS COURT →

FLAT

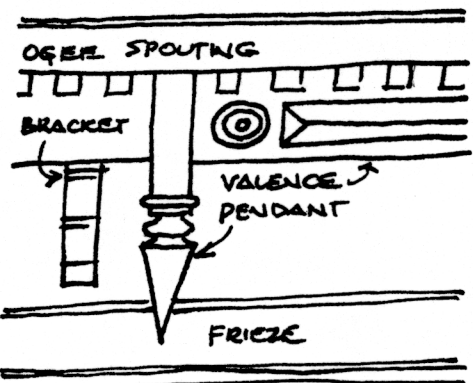


EDGE TILES
OLD ASPHALT PATH

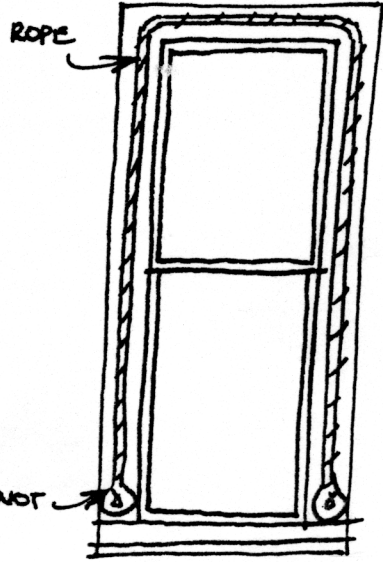
EDGE TILES

No 56

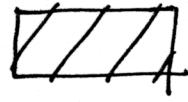
VIRGINIA STREET



↑ LEAVES DETAIL ELEVATION
→ WINDOW DETAIL ELEVATION



RP 30.3.97 NTS
RECENT ADDITION:



HISTORY: Built between 1879 and 1884 (the rate books for these years are missing), this timber house with six rooms, a kitchen and bathroom was owned and occupied by John Nicholson, a captain. Nicholson owned the house for a few years before selling to Marcell Conran, a woolbroker. Conran soon sold to William and Eleanor Pacey, a dentist and housewife. The Paceys lived here for about fifteen years, then William Pacey rented it to John Urbalus for a short while before selling to Archibald Kennedy c1915. Kennedy lived here for about twenty years before selling it to A. Devine c1925. Around 1910, the land was measured at 100' x 220'. In 1921 the measurements were split to show 51' x 110' & 51' x 220', but by 1925 the measurement was 102' x 110'.¹

VISUAL DESCRIPTION: An unusual triple-fronted timber late Italianate house, with an hipped roof, with some unusual decorative details. The left and right side rear bays are set forward with canted bay windows expressed in the roof. The ogee-roofed verandah returns around the angle. It has a fine cast-iron lace frieze, over a rail, with valance and brackets below on Doric timber posts. Chimneys are rendered, with dentils and Classical mouldings.

Eaves are complex, with dentils over discs and panels with spearheaded pendants. The frieze has ogee brackets with fine moulds and weatherboards have beads. Windows and the entrance have most unusual cable-moulding on architraves. There is a window-pair under the verandah. The entrance has a four-panelled door, with side and fanlights. The sub-floor is ashlar bluestone.

SIGNIFICANCE: An unusual timber late Italianate house with some most unusual decorative details, built between 1879 and 1884. The first owner was a (sea?) captain, hence presumably, the nautical details. It is architecturally significant as an unusual variant of this domestic style and historically in embodying life in Newtown in the early 1880s.

INTACTNESS: Very good, although chimneys have been painted and the fence is recent.

CONDITIONS & THREATS: Excellent.

¹ City of Newtown and Chilwell Ratebooks.