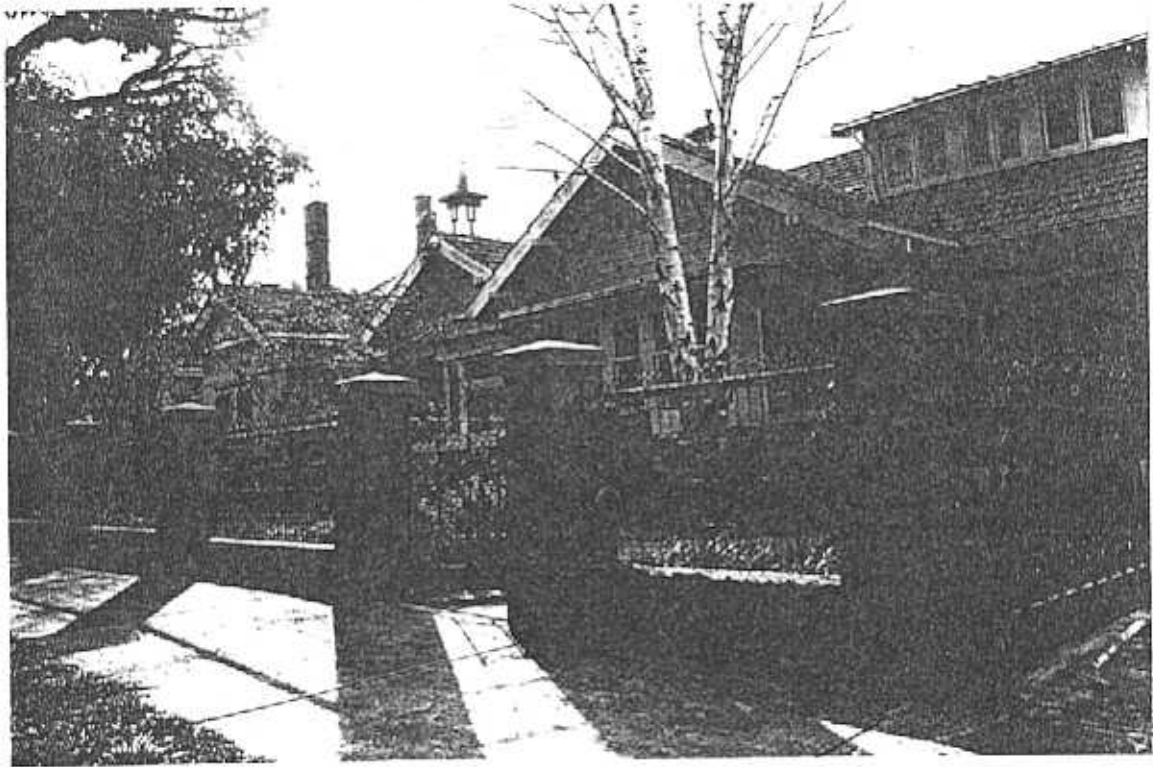


**NEWTOWN URBAN CONSERVATION STUDY. - 'C' CITATIONS. Ref: 271**

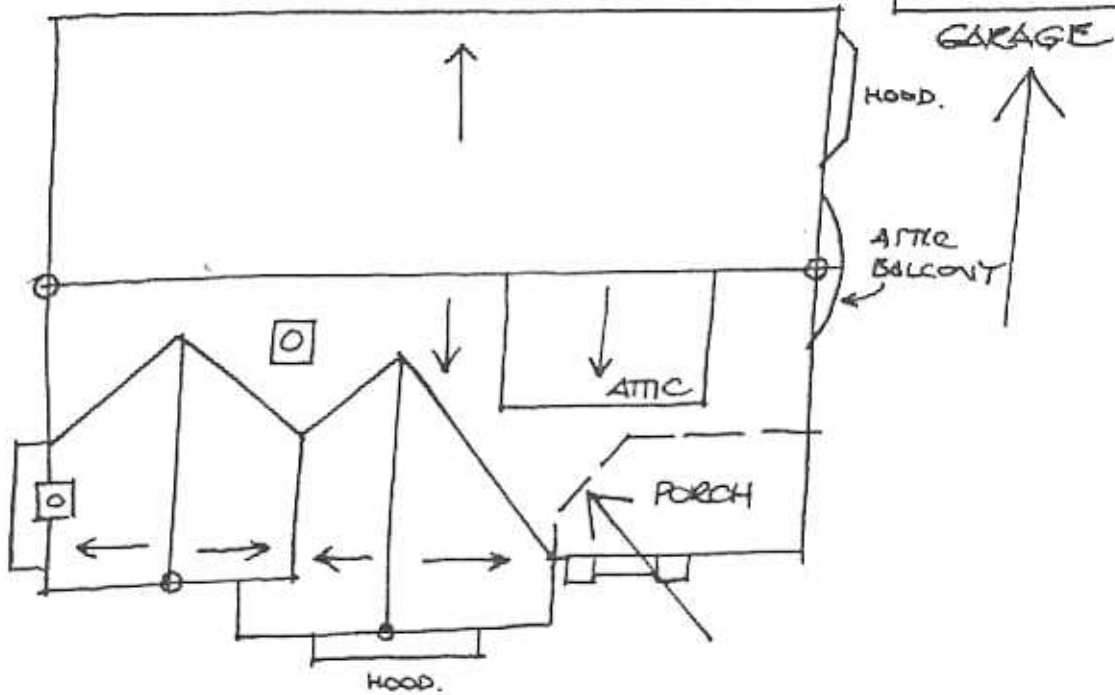
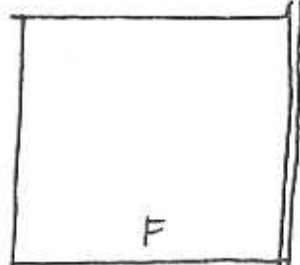
Richard Peterson Architect & Conservation Consultant, 1997.

<b>NAME:</b> Bundaree	
<b>ADDRESS:</b> 60 Virginia Street	
<b>USE:</b> House	
<b>SIGNIFICANT DATE:</b>	<b>CONSTRUCTION DATE:</b> 1918 <b>SOURCE:</b> 1
<b>DESIGNER:</b> —	<b>BUILDER:</b> —
<b>CRITERIA:</b> H1; Ar1	<b>HISTORIC THEME:</b> 2.3
<b>DESCRIPTION:</b> <b>STYLE:</b> Bungalow <b>STORIES:</b> 2 <b>DETACHED.</b>	
<b>MATERIALS:</b> <b>WALLS</b> Brick <b>ROOF</b> Tile <b>STRUCTURE</b> Lb	
<b>CONDITION:</b> Very good <b>INTACTNESS:</b> Excellent <b>THREATS:</b> —	
<b>SIGNIFICANT INTACT ELEMENTS:</b> FORM. FACADE. PORCH. ROOF FORM. GABLE DECORATION. ROOF DECORATION. CHIMNEYS. Pots. WALL DECORATION. TUCKPOINTING. DOOR. WINDOWS. PAINTWORK SCHEME. FENCES. GATES. CONTEXT Nos: 49 & 58.	
<b>SIGNIFICANCE:</b>	
<b>TYPE:</b>	HISTORICAL. ARCHITECTURAL.
<b>LEVEL:</b>	LOCAL.
<b>DESIGNATION EXISTING:</b>	PLANNING SCHEME.
<b>RECOMMENDED CONTROL:</b>	PLANNING SCHEME.
<b>SURVEY:</b> RP	<b>DATE:</b> 30.3.1997 <b>NEGS:</b> 1281.37,38; 1282.1; 12.28,29





271

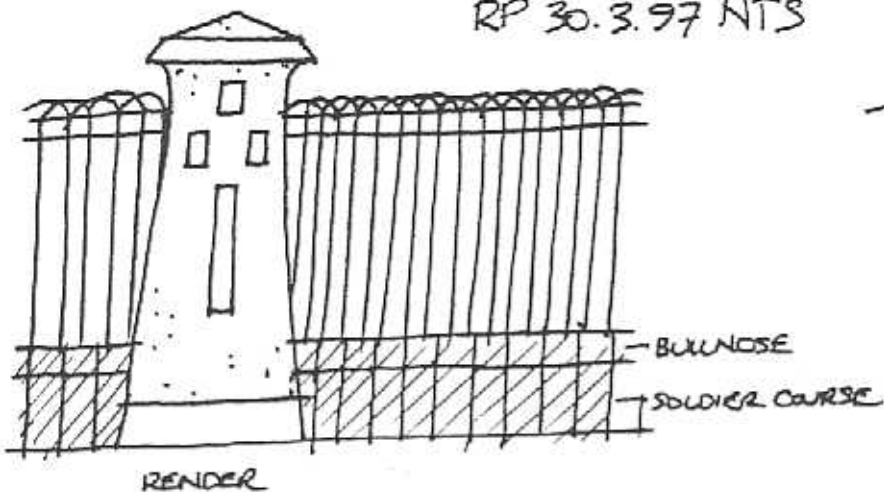


No 62

BUNDAREE  
No 60

No 5c

VIRGINIA STREET  
RP 30.3.97 NTS



**HISTORY:** In 1918 this brick house on land measuring 60' x 110' was built for Ida Sweetman. She rented the house to Teresa Cox, a widow, who was still the tenant in 1925. At this time the land was measured at 65' x 110'.<sup>1</sup>

**VISUAL DESCRIPTION:** A large triple-fronted brick gable-roofed Californian Bungalow, with some fine and unusual, perhaps Asian influenced, details and an attic. A major gable extends across. Projecting at front are a minor gable, left and at centre, a more major gable, with a rectangular bay window. This has a flat roof on deep, ogee rafters and four sashes. There is another canted window hood at right, rear.

Recessed in the angle at right, is a large porch. Unusually, the entrance is in its angle, splayed. Rafters are exposed here, supported on a bressumer, over a lintel on block pairs. Posts are in groups of four, abstracted Tuscan, on brick piers with rendered, stepped tops. At right, is a plain timber balustrade. The entrance has side, fan and highlights in leadlight, with a leadlight and panel door.

The roof is clad with Marseilles unglazed terracotta tiles with finial. There is a skillion roof light. Windows generally, are leadlight rectangular panes, with decorative upper sashes. There is a dado band. Barges have rounded ends, supported on purlin-pairs, with broad concave bracket pairs. Upper gables have palisaded timbers, below are splaying shingles on blocks. At right is a gently curved attic balconette with a balustrade.

The fence is important and unusual. It is woven wire over a bull-nosed brick plinth, with metal ribbon gates, curlicue and quatrefoil pattern. Piers are Mackintosh-influenced pylons, with slots and shallow-domed caps.

**SIGNIFICANCE:** A large brick, particularly intact and early, Californian Bungalow, with some fine and unusual, perhaps Asian influenced, details including the front fence (which may also be influenced by Charles Rennie Mackintosh) and an attic, all built in 1918. It is architecturally significant locally as an eclectic, early and fine representative of this domestic style and historically in embodying life in Newtown at the close of the Great War.

**INTACTNESS:** Excellent.

**CONDITIONS & THREATS:** Very good.

---

<sup>1</sup> City of Newtown and Chilwell Ratebooks.