

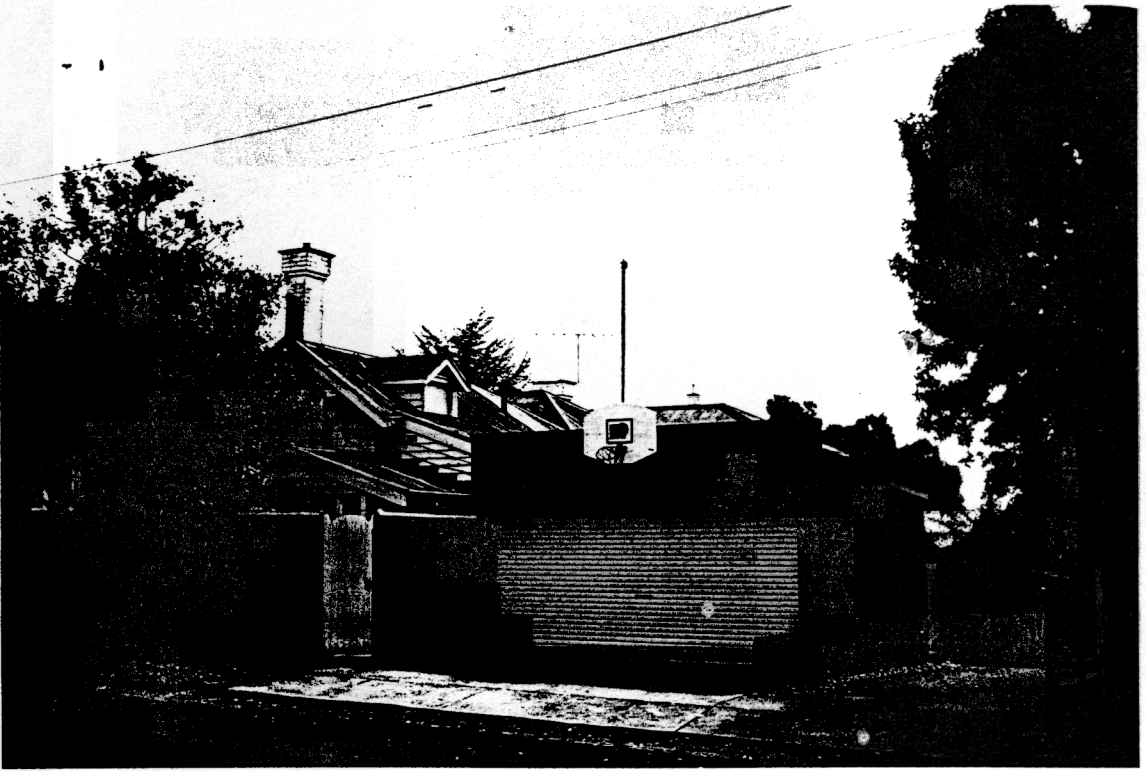
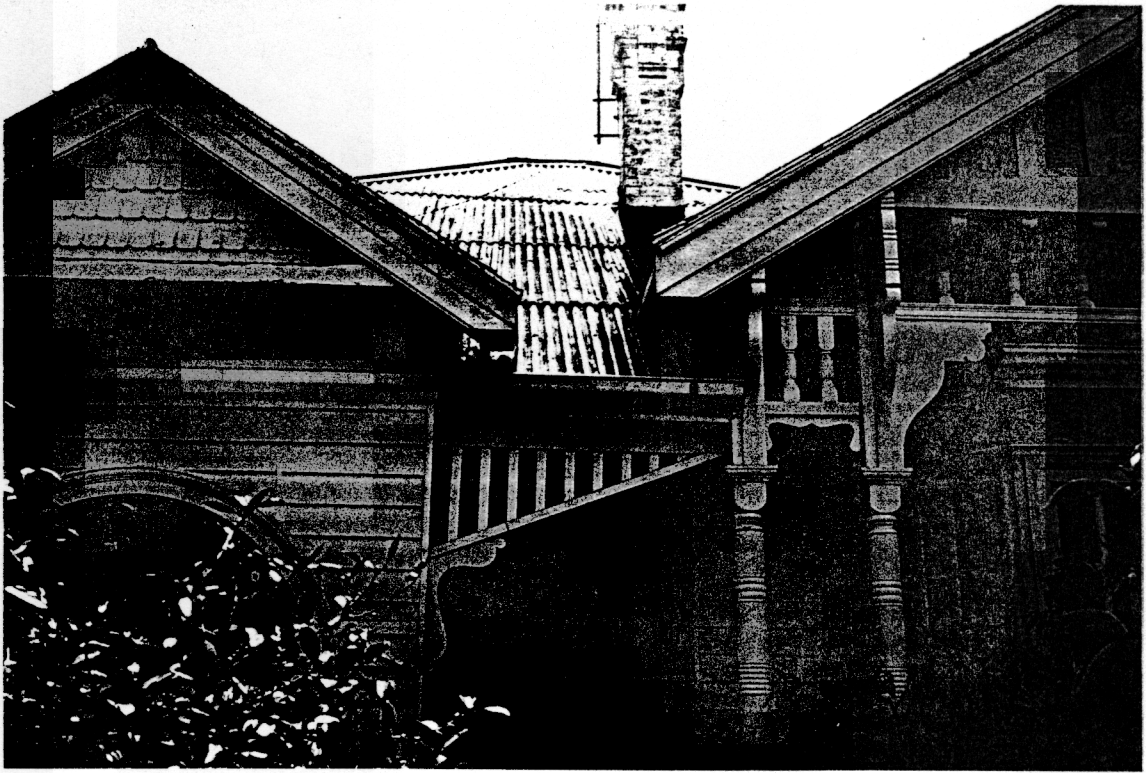
**NEWTOWN URBAN CONSERVATION STUDY. - 'C' CITATIONS. Ref: 272**  
 Richard Peterson Architect & Conservation Consultant. 1997.

<b>NAME:</b> —	
<b>FORMER NAMES:</b>	St. Ronans; Coorabelia
<b>ADDRESS:</b>	66 Virginia Street (NE cnr Pakington Street)
<b>USE:</b> House	
<b>SIGNIFICANT DATE:</b>	<b>CONSTRUCTION DATE:</b> 1897 (?) <b>SOURCE:</b> 1
<b>DESIGNER:</b> —	<b>BUILDER:</b> —
<b>CRITERIA:</b> H1; Ar1	<b>HISTORIC THEME:</b> 2.3
<b>DESCRIPTION:</b>	<b>STYLE:</b> Edwardian <b>STORIES:</b> 1 <b>DETACHED.</b>
<b>MATERIALS:</b>	<b>WALLS</b> Timber <b>ROOF</b> Iron <b>STRUCTURE</b> Stud
<b>CONDITION:</b> Good*	<b>INTACTNESS:</b> Very good <b>THREATS:</b> Traffic.
<b>SIGNIFICANT INTACT ELEMENTS:</b>	
FORM. FACADE. VERANDAH. ROOF FORM. GABLE DECORATION. ROOF DECORATION. VERANDAH DECORATION. CHIMNEYS. DOORS. WINDOWS. Leadlight & stained glass. CONTEXT Nos: 51 & 62 Virginia Street & 270 Pakington Street.	
<b>SIGNIFICANCE:</b>	
<b>TYPE:</b>	HISTORICAL. ARCHITECTURAL.
<b>LEVEL:</b>	LOCAL.
<b>DESIGNATION EXISTING:</b>	PLANNING SCHEME.
<b>RECOMMENDED CONTROL:</b>	PLANNING SCHEME.
<b>OBSCURED.</b>	<b>SURVEY:</b> RP <b>DATE:</b> 30.3.1997 <b>NEGS:</b> 11.8-12 & 1282.2



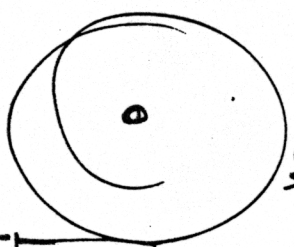


27E

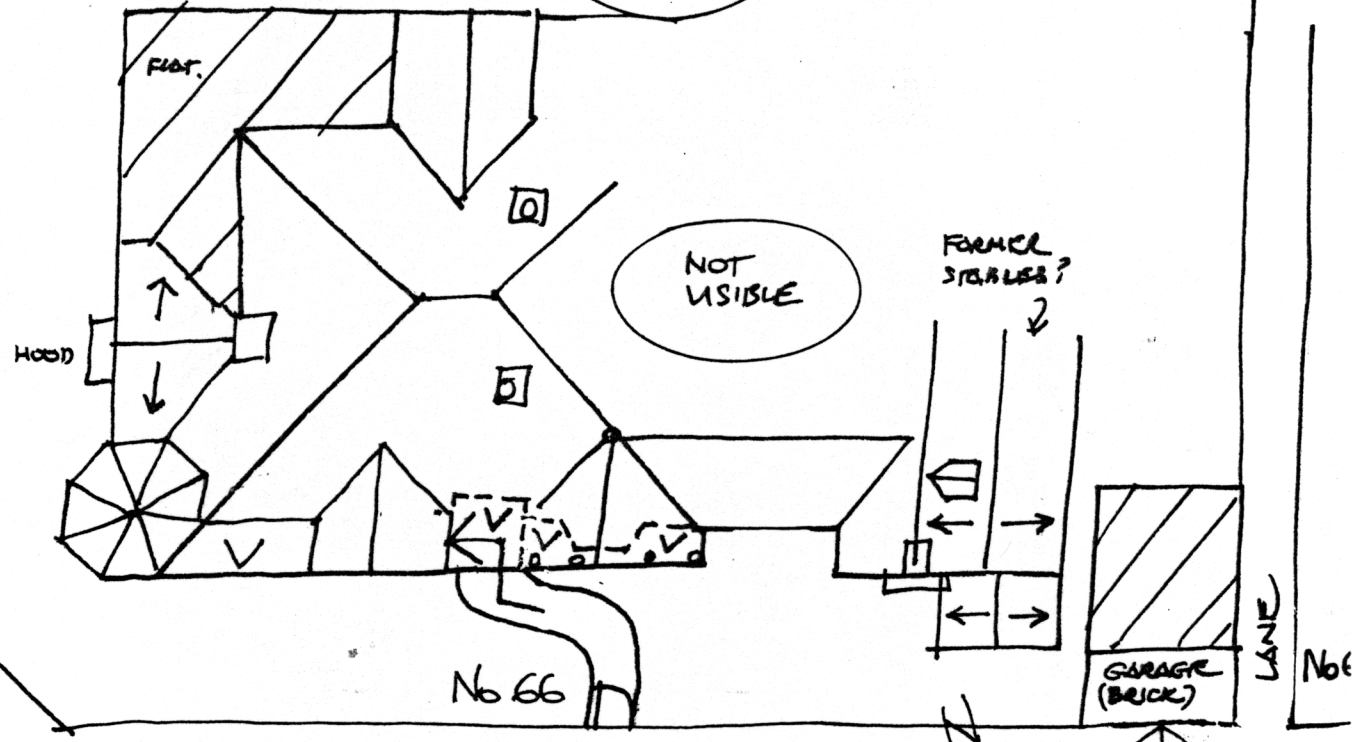




PAKINGENA STREET



LARGE SILVER BIRCH!

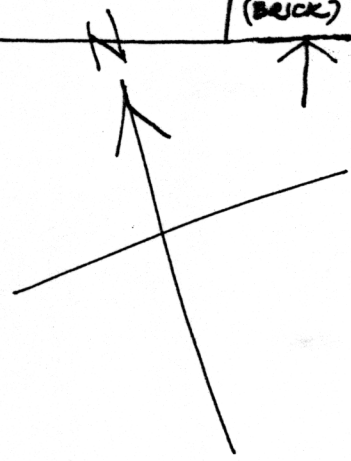
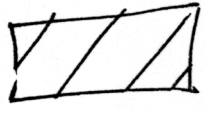


No 66

VIRGINIA STREET

RP. 30.397 NTS.

RECENT ADDITION:



GARAGE (BRICK)

LANE

No 6



**HISTORY:** This timber cottage with nine rooms, a bathroom and pantry was built in 1897 with Charles Purcott as the owner and occupier. Within a few years Mrs Purcott was the owner but she rented it to Edward Sharp, a gentleman, and then soon sold to Rebecca Heron. Heron named it St. Ronans and rented to Alfred Fussell, a school inspector. She sold the house soon after and, by 1910, Henry Brown, auctioneer, was the owner and occupier, renaming it Coorabelia. He lived there for about 10 years and, c1920, sold to Bernard Hickie, a printer. In 1925 the land was measured at 111'7" x 110'2".<sup>1</sup>

**VISUAL DESCRIPTION:** A large and most complex timber Edwardian house with a high-hipped roof. It has three bays to Pakington Street and five bays to Virginia Street. A gable projects centre to Pakington Street, there is an octagonal tower at the angle, two sections of verandah under the hip, penetrated by a minor gable, then a further complex gable and gable linking to what appears to be former stables, with their own chimney and dormer window.

The Pakington Street gable has timbered roughcast, jettying on fretwork brackets, over mock shingles, terminating in a turned finial. Verandahs have palisades on valances on coved fretwork brackets. The third bay's gable to Virginia Street, has shingles over coved roughcast and broad, round-headed leadlight window. It forms the entrance-hall presumably, although the door is unremarkable.

The major gable is most elaborate. Its upper section is timbered roughcast over fretwork brackets, supported on unusual, turned short post-pairs. Side sections are below mock shingles, with apron and ogee brackets. Beneath is a canted bay, with its own hipped roof, under the gable, clad with shingles. Below the cornice-mould is roughcast, then a mock shingle frieze. Upper sashes are generally six-paned leadlights.

**COMPARATIVE ANALYSIS:** Khandeish, 19 Laurel Bank Parade (1902).

**SIGNIFICANCE:** A large and most complex, timber Edwardian house built in 1897. It has architectural significance locally as an unusual variant on the Edwardian domestic manner and historically in embodying professional family life in Newtown early this century.

**INTACTNESS:** Very good.

**CONDITIONS & THREATS:** Good, threatened by traffic, pollution and vibration.

---

<sup>1</sup> City of Newtown and Chilwell Ratebooks. The present owner, Mrs Neunhoffer says the construction date was 1903 and that there were alterations in the 1930's. Conversation with RP, 30 March 1997 and interior inspection.